



SOLD

**PRIME LEVEL 22 CORNER FLOOR PLAN.
SPACIOUS, BRIGHT AND AIRY WITH
SPECTACULAR VIEWS!!!**

Perched high on level 22 in the well renowned Skyring Apartments, one of Newstead's most exciting addresses. This stunning apartment epitomises the perfect work/play balance for the ultimate city lifestyle. New carpets, lighting upgrades add to the brand new feel. The facility rich resort style living is perfect for owner occupiers while the low body corporate fees and rates makes this the accountant's (and fashionista's) choice with strong investment potential.

Located between Newstead and Teneriffe, immediately above the Gasworks shopping precinct, this natural light filled and breeze capturing one-bedroom apartment is a short stroll from shopping, restaurants and nightlife and of course there are also river walks, ferries and transport options everywhere.

- Corner position with extensive side windows and glazing
- Roomy one bedroom floor plan
- European appliances
- Dishwasher and dryer
- Reverse cycle air-con
- NBN integrated
- Gasworks precinct location
- Exceptional on-site management
- World class facilities
- 25m lap pool
- Fully equipped gymnasium
- BBQ and entertaining facilities
- 23 visitor parks
- Total floor plan size of 74sqm including 13sqm balcony.
- Council rates: approx \$1360.68 yearly. Body corporate fees: approx \$3770.57 yearly

1 BED | 1 BATH | 1 CAR

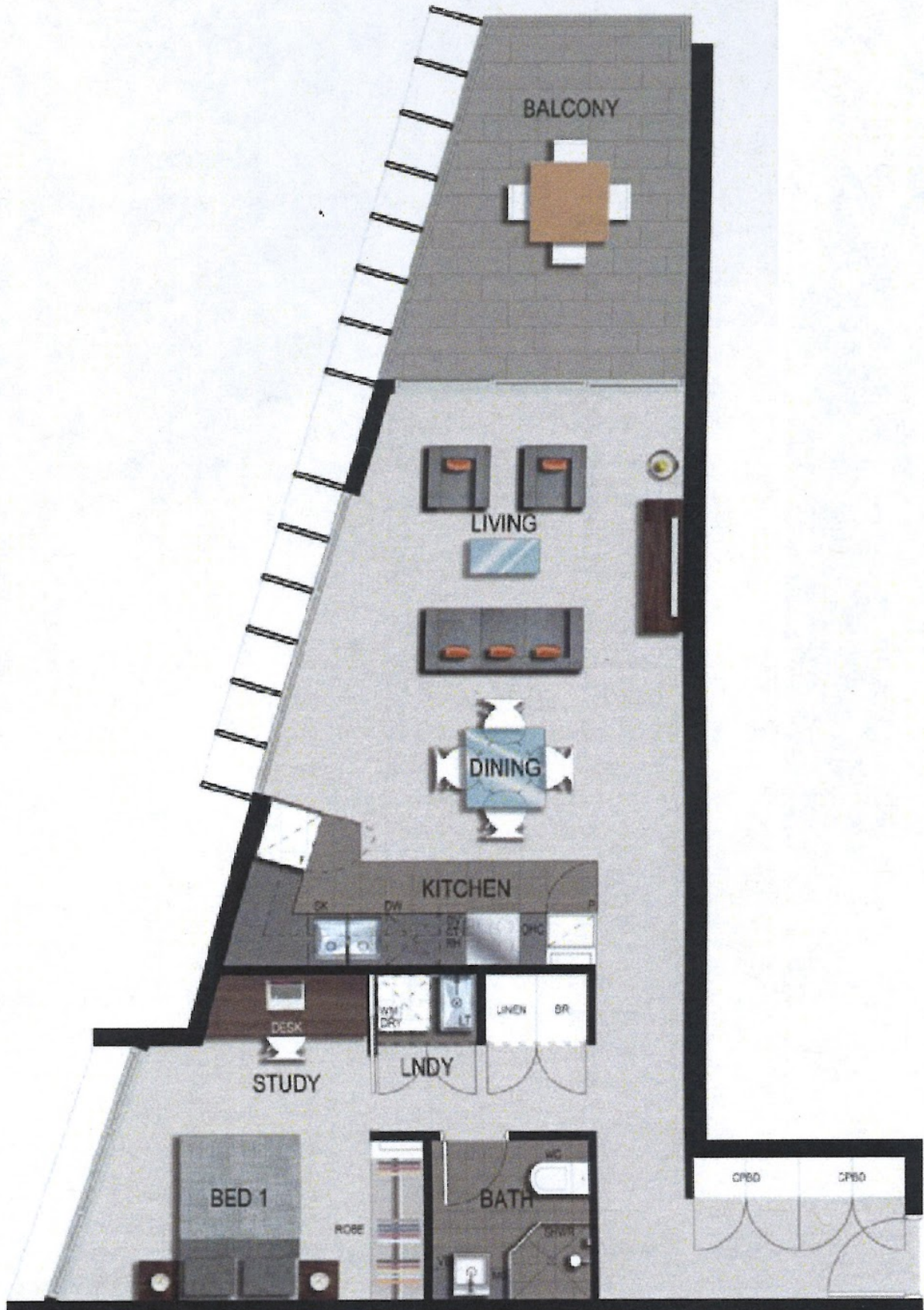
PRICE:
\$472,500

OPEN FOR INSPECTION:
N/A



Peter McDonald
0407026165
peter.mcdonald@atrealty.com.au
www.atrealty.com.au

TYPE 1



Disclaimer: Please note this floor plan is for marketing purposes and is to be used as a guide only. All dimensions are estimates only and may not be exact measurements.