



SOLD

PARADISE FOUND

Positioned on an expansive, secure 6114m2 allotment this stunning home will welcome you in and steal your heart. Set over 2 levels this residence offers an executive-level lifestyle with the heart of a family home. The commanding facade is accompanied by formal landscaped gardens that will make a lasting impression. Once inside, the interior is sure to impress positioned in the formal entry hallway is a unique granite mosaic wall feature commissioned by a well-renowned artist Scott Harrower.

This home is a private haven for a large family offering security and tranquility. The quality features throughout the home are truly one of a kind consisting of floor-to-ceiling granite in the bathrooms terrazzo floors a stunning marble mantelpiece sandstone balustrades and retaining walls complete with granite window sills.

This home comes complete with a sparkling in-ground swimming pool and water wall. The expansive outdoor entertaining deck flows from the living area. With multiple living spaces and plenty of storage options for hubby's toys and the home business, this feature-packed home is a must to inspect

FEATURES INCLUDE:

- Solid double brick construction
- 5 generous bedrooms- Master suite with walk-in robe and ensuite
- The large centrally located kitchen provides plenty of bench space and storage gas cooking and dishwasher
- Your choice of separate expansive living space including formal and informal lounge and dining options
- Wood and gas heating, ceiling fans through-out designed for ducted air-conditioning
- High ceilings through-out
- Timber floors in the living areas
- Spa bath
- Established hedges, mature trees including a fig tree and various fruit trees, with flat usable lawns
- Town water
- Double garage with internal access and storage space
- Downstairs living and bathroom
- Water fountain
- Solar panels

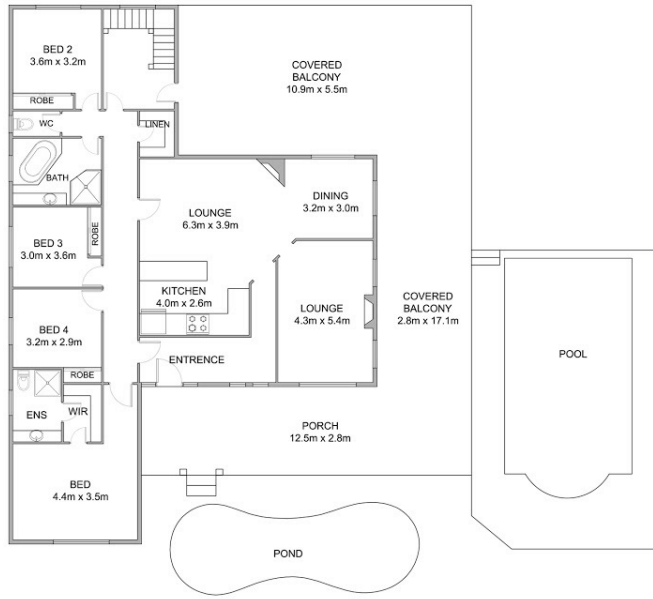
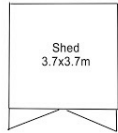
5 BED | 3 BATH | 2 CAR

PRICE:
\$1,290,000

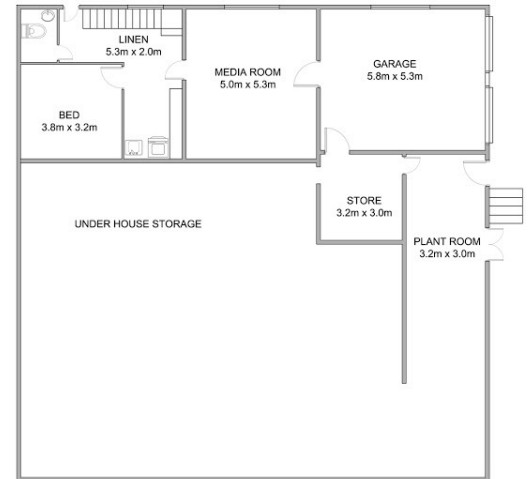
OPEN FOR INSPECTION:
N/A



Peta Thompson
0403123115
petathompson@atrealty.com.au
www.atrealty.com.au



UPPER FLOOR PLAN



LOWER FLOOR PLAN

This floor plan including furniture, fixture measurements and dimensions are approximate and for illustrative purposes only. Boxbrownie.com gives no guarantee, warranty or representation as to the accuracy and layout. All enquiries must be directed to the agent, vendor or party representing this floor plan.



11 Funnell Drive, Modanville

Disclaimer: Please note this floor plan is for marketing purposes and is to be used as a guide only. All dimensions are estimates only and may not be exact measurements.