



SOLD

VILLA WITH HUGE FENCED COURTYARD FOR DOG

A very rare villa on a generous 474m2 approx which is only connected to one other unit, similar to a half-duplex. This low maintenance property has a huge fenced courtyard perfect for a dog*. Double side access with space to park a 2nd car, boat or jetski. Lots of entertaining space with a very large undercover patio plus paved outdoor alfresco area. Kitchen with gas stove/oven, lounge and dining with high pitched ceiling and split system aircon. A massive master bedroom, plus 2 good sized bedrooms all with built in wardrobes, bathroom with shower, internal laundry, carpet floors, fans & security screens throughout, and a single remote lock up garage with direct access to the garden shed. Situated at the end of a quiet cul-de-sac in a small complex of only 5 villas with swimming pool, a highly desirable locale only minutes to the Edge Hill & Whitfield café hub, popular Botanical Gardens, cultural precinct, schools, shops and medical facilities. This home is ideal for the downsizer, first home buyer or investor.

Currently rented at \$375 per week fixed lease 15.10.2020 - 13.10.2021
ROI 6% per annum approx
Body Corporate Fees \$4,200 per annum approx
Council Rates \$2600 per annum approx

*subject to Body Corporate approval, complex has precedence for pets.

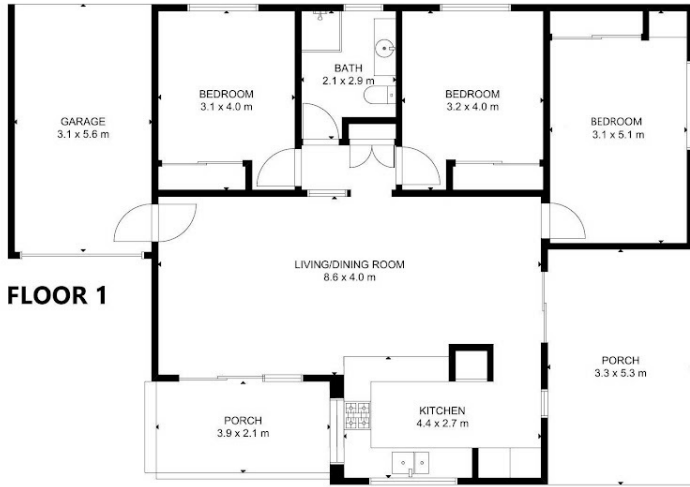
3 BED | 1 BATH | 1 CAR

PRICE:
\$325,000

OPEN FOR INSPECTION:
N/A



Zoe Wicks
0477114778
zoewicks@atrealty.com.au
www.atrealty.com.au



Zoe Wicks | [@realty](#)
Real Estate

Disclaimer: Please note this floor plan is for marketing purposes and is to be used as a guide only. All dimensions are estimates only and may not be exact measurements.