

# FOR SALE

**SOLD! SOLD! SOLD!**

Best offer \$470,000

This sensational 'New House' apartment in the Brewery complex in popular Kent Town is a perfect opportunity not to be missed. Cleverly designed Low maintenance, "High Lifestyle", and feature packed living just minutes from the City.

Built in approx. 2001 the apartment would appeal to a wide group of buyers including ; First Home Buyers, Down-Sizers, Investors, and anybody looking for a low maintenance lifestyle being so close to the vibrant East End and everything that is associated with that.

Spectacular views looking back at Rundle Street, and over the Parklands and City. Will ideally suit anybody looking for a low maintenance, high excitement lifestyle being so close to the vibrant East End and everything that is associated with that.

The location is superb with a short walk finding you in the East End cafe's, restaurant's, festivals and prestigious schools and Universities also close by.

Mingle with the Celebrities, Executives, and like minded people, who want more out of life. Sauna, Gym and an In-ground Swimming pool are part of the package, so simply move in, and just enjoy! Close to Schools , Shops, Cafes and transport.

The apartment consists of:

- \*2 well sized bedrooms, both with built ins
- \*Open plan dining/loungeroom
- \*Lovely kitchen with a dishwasher
- \*Tiled throughout for easy maintenance
- \*Sparkling bathroom with a bath and shower
- \* Separate toilet
- \*Separate European style laundry
- \*Reverse cycle air conditioning

**2 BED | 1 BATH | 1 CAR**

**PRICE:**

**SOLD BY AGGIE SERAFIN**

**OPEN FOR INSPECTION:**

N/A



**Aggie Serafin-Anfiteatro**

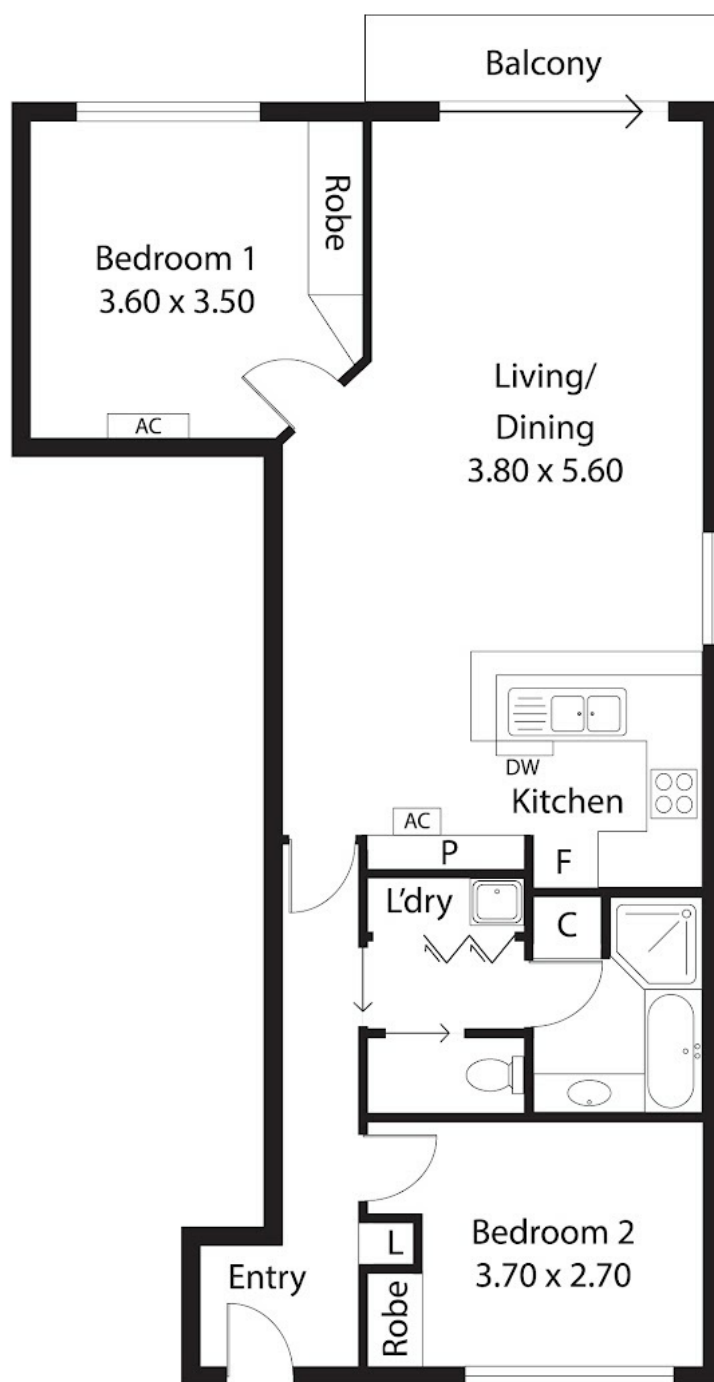
**0431171409**

aggie.serafin@atrealty.com.au

[www.atrealty.com.au](http://www.atrealty.com.au)

RLA: 269823

62/8 Rundle Street,  
**KENT TOWN**



Disclaimer: Please note this floor plan is for marketing purposes and is to be used as a guide only. All dimensions are estimates only and may not be exact measurements.

Balcony: 3.20SQ.M

**TOTAL: 79.63SQ.M**

**Aggie Serafin-Anfiteatro**  
**0431171409**  
aggie.serafin@atrealty.com.au  
[www.atrealty.com.au](http://www.atrealty.com.au)

This drawing is for illustration purposes only. All measurements are internal and approximate. Details intended to be relied upon should be independently verified.

**@realty**