



SOLD

HESITATE & MISS

This 2016 Pimpama home is an incredible opportunity for a family to live or invest with a great rental return from long term tenants. A fantastic design, one level, 4 bed, 2 bathroom home showcases all that is great about the beautifully finished MG Homes.

Minutes to the Motorway, the infrastructure build pace here is breathtaking with the new Fire Station and Police Station under construction. Established amenities nearby, include the New Pimpama Primary school only 150m away. the New Pimpama Junction Shopping Village, sports facilities and the Westfield Coomera Shopping Centre.

A short 30 minute drive to Broadbeach positions this home beautifully for work and play.

Featuring

- * Four generous sized bedrooms with BIR and ceiling fans
- * Split system air conditioning in main living and master bedroom
- * Open plan kitchen, lounge and living area
- * Additional Media Room / Office
- * Modern kitchen with quality finish includes 20mm Stone bench tops
- * Remote double garage
- * Fully fenced block
- * Currently tenanted at \$450 per week until July 2021
- * Council Rates \$868 per 6 months. Water and Sewerage rates \$463 Per Qtr

4 BED | 2 BATH | 2 CAR

PRICE:
\$479,000

OPEN FOR INSPECTION:
N/A



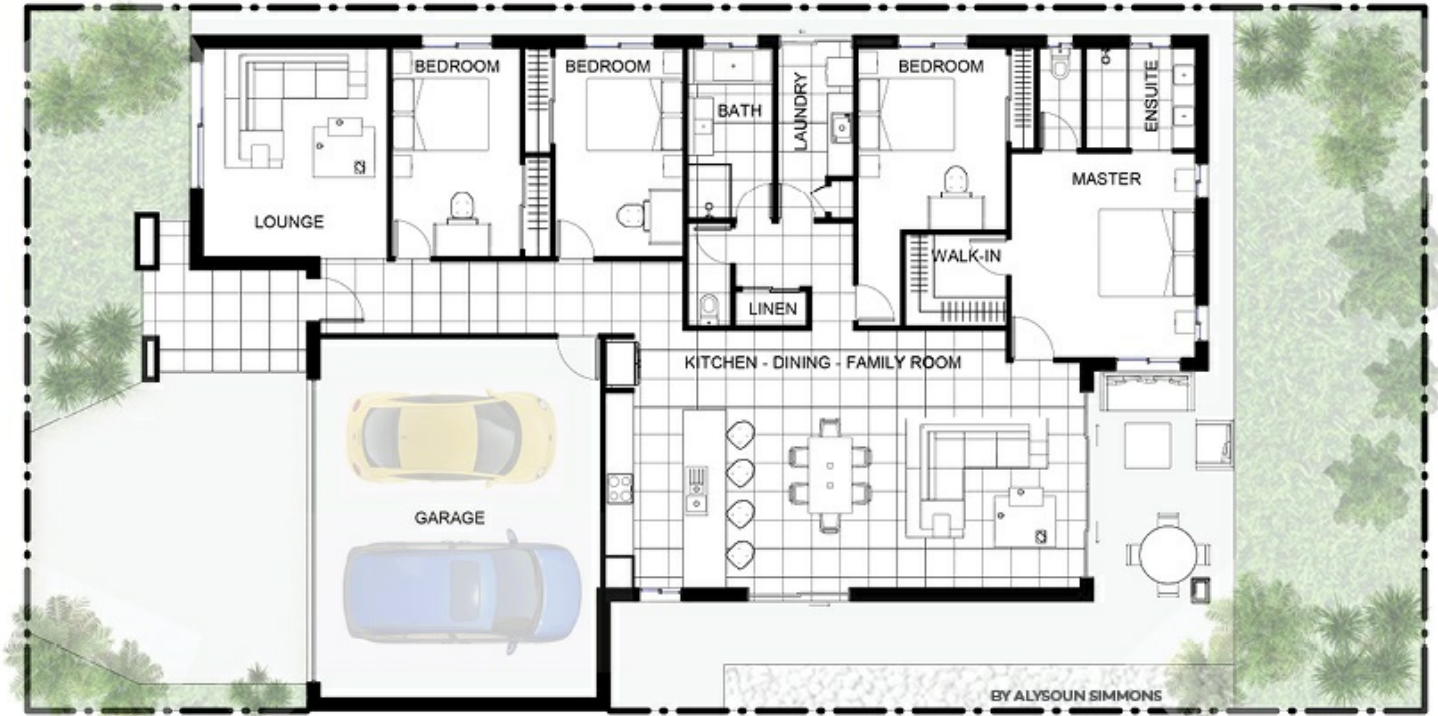
Tony Higgins
0412711746
thiggins@atrealty.com.au
higginsrealty.com.au

32 MC VEIGH STREET, PIMPAMA

4  2  2  2  177m²

Internal Area: 177m² | External Area: 21m² | Total Area: 198m² |

TONY HIGGINS @realty



Dimensions are approximate. Floor plan is intended as a guide only. No representation or warranties of any nature are given or intended. Any person using this information should rely on their own inquiries.

Disclaimer: Please note this floor plan is for marketing purposes and is to be used as a guide only. All dimensions are estimates only and may not be exact measurements.

Tony Higgins
0412711746
thiggins@arealty.com.au
higginsrealty.com.au

@realty