

SOLD

PRIVACY AND GREENERY

Freshly painted and with vacant possession. Whether looking to invest or to accommodate a son or daughter about to start university this is a unique opportunity to secure a well-positioned apartment in a hugely popular complex. Located on level 2 in Tower 1, it has a north east facing balcony for alfresco living with views that look down Jacaranda lined Land Street towards the Wesley Hospital.

High ceilings and a good layout create an open spacious feel to this apartment which has a private green outlook. The décor is neutral with white cabinetry and granite bench tops, and with separate dining and living areas, furniture arrangement is easy. It has secure parking, secure access to the building and each floor, CCTV monitoring and friendly, efficient on-site management.

Apartment Features -

- * Circa 2003
- * 70 sqm - Internal 54 sqm plus 16 sqm of balcony
- * Neutral tones, granite bench tops, gas cook top
- * Air-conditioned lounge with north-east aspect
- * Bedroom with balcony access
- * Large balcony with treed outlook
- * Two way bathroom with walk in shower and hideaway laundry
- * Single car space
- * Secure building access to floor and parking area
- * Rental appraisal is \$400 per week

Complex Features -

- * Designed by TVS Architects, the curvilinear plan provides all 121 apartments with a north-east aspect and views
- * Friendly and efficient on-site management
- * Secure building with CCTV and video intercom for entry
- * 20m resort style pool with relaxation area and separate spa
- * Full size tennis court and well-equipped gymnasium
- * Indoor heated hydro-jet pool, sauna and change rooms
- * Meeting room with kitchen facilities
- * BBQ pavilion and entertaining area beside tennis court

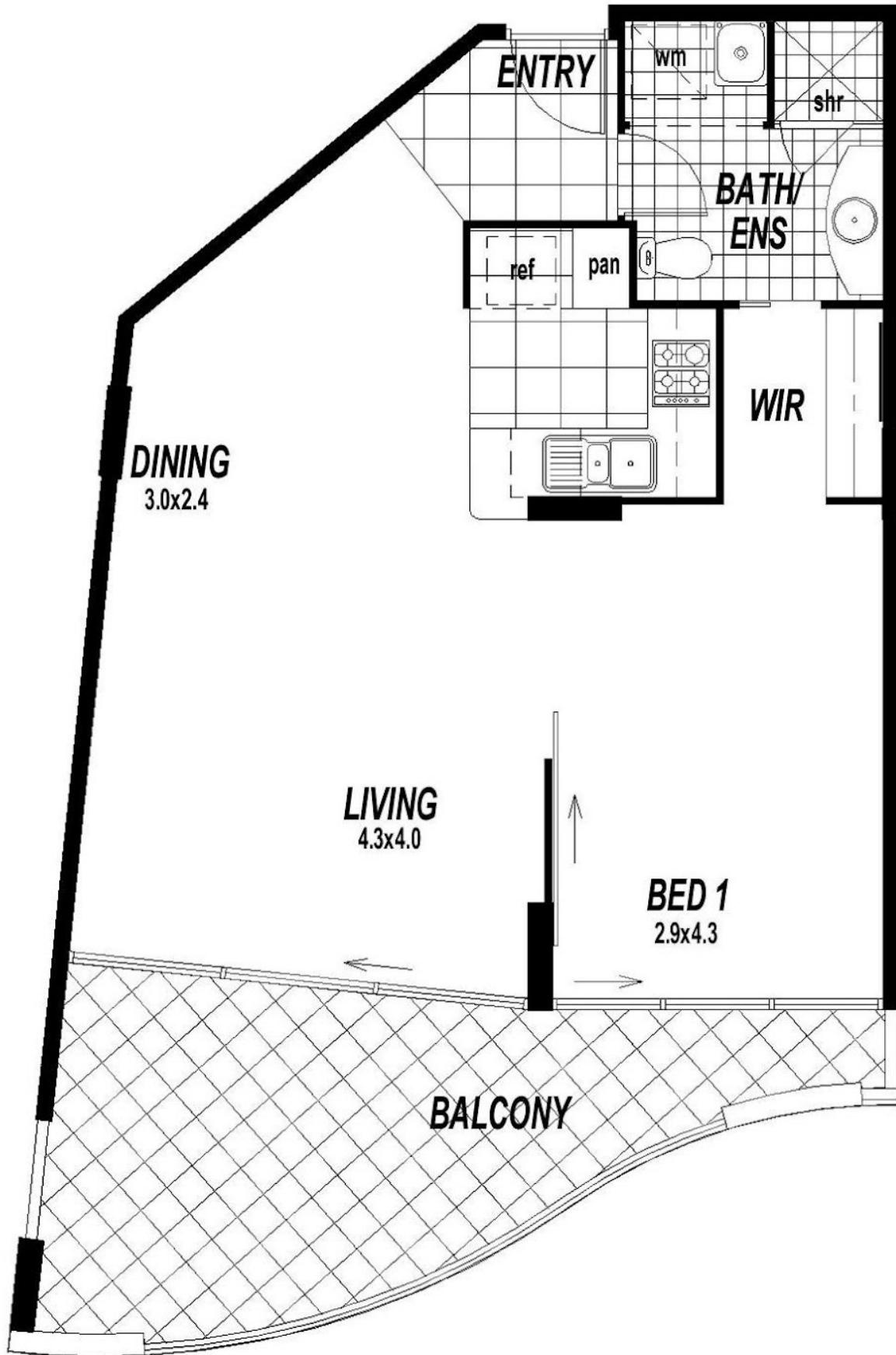
1 BED | 1 BATH | 1 CAR

PRICE:
\$338,000

OPEN FOR INSPECTION:
N/A



Sue Barnes
0418988715
suebarnes@atrealty.com.au
www.atrealty.com.au



Disclaimer: Please note this floor plan is for marketing purposes and is to be used as a guide only. All dimensions are estimates only and may not be exact measurements.