



View from deck

**SOLD**

## POSITION! POSITION ! LARGE FAMILY HOME, HUGE DECK WITH PICTURESQUE RURAL VIEWS.

This property is situated in one of the best locations in Crows Nest. A new large solid timber entertainment deck is attached to the rear of the home and it boasts acres of lovely rural views to the south. Can you imagine relaxing on this deck watching the cattle in the distance grazing in the paddocks and watering at the large shaded dam .

If you are looking for privacy and tranquility this is it!

The interior of the home has been completely renovated. Painted and new floors through out. The huge open plan kitchen, dining and living area has the "WOW FACTOR". Presenting a modern new kitchen with soft close cupboards and large draws and quality euro appliances, electric ceramic cook top, electric oven and dishwasher. Every cook will enjoy the use of the large "Chefs Island ", ideal for food preparation and entertaining. Open the sliding doors in the kitchen and dining area and walk through to the large deck and enjoy the views while entertaining your friends and family.

### FEATURES OF THE HOME

- Large open plan, new modern kitchen , dining and living area with quality new timber vinyl plank flooring.
- 3 bed rooms with wall to wall built in robes and new carpet flooring.
- Master bedroom offers a large walk-in-robe and a new ensuite; vanity, toilet and an oversized shower. Northerly views from the bedroom window look out at the native bush land where one will see the occasional Koala Bear, Echidna or Wallaby..
- New modern tiled laundry, offering lots of storage and bench space.
- New light fittings in every room and power points everywhere plus sensor outdoor spot lights.
- New wired in smoke alarms throughout in every bed room and living areas.
- Linen press and ample cupboard space throughout the home.
- Tiled family bathroom, separate shower, bath and vanity.
- Separate toilet.
- Fans throughout the home and a large reverses cycle split system capable of cooling and heating the living, dining and kitchen areas. Steel frame home.
- New oversized single lock up steel color bond shed. Cement floor and power points. Ample space to easily accommodate a campervan.
- Small garden shed.

4 BED | 2 BATH | 3 CAR

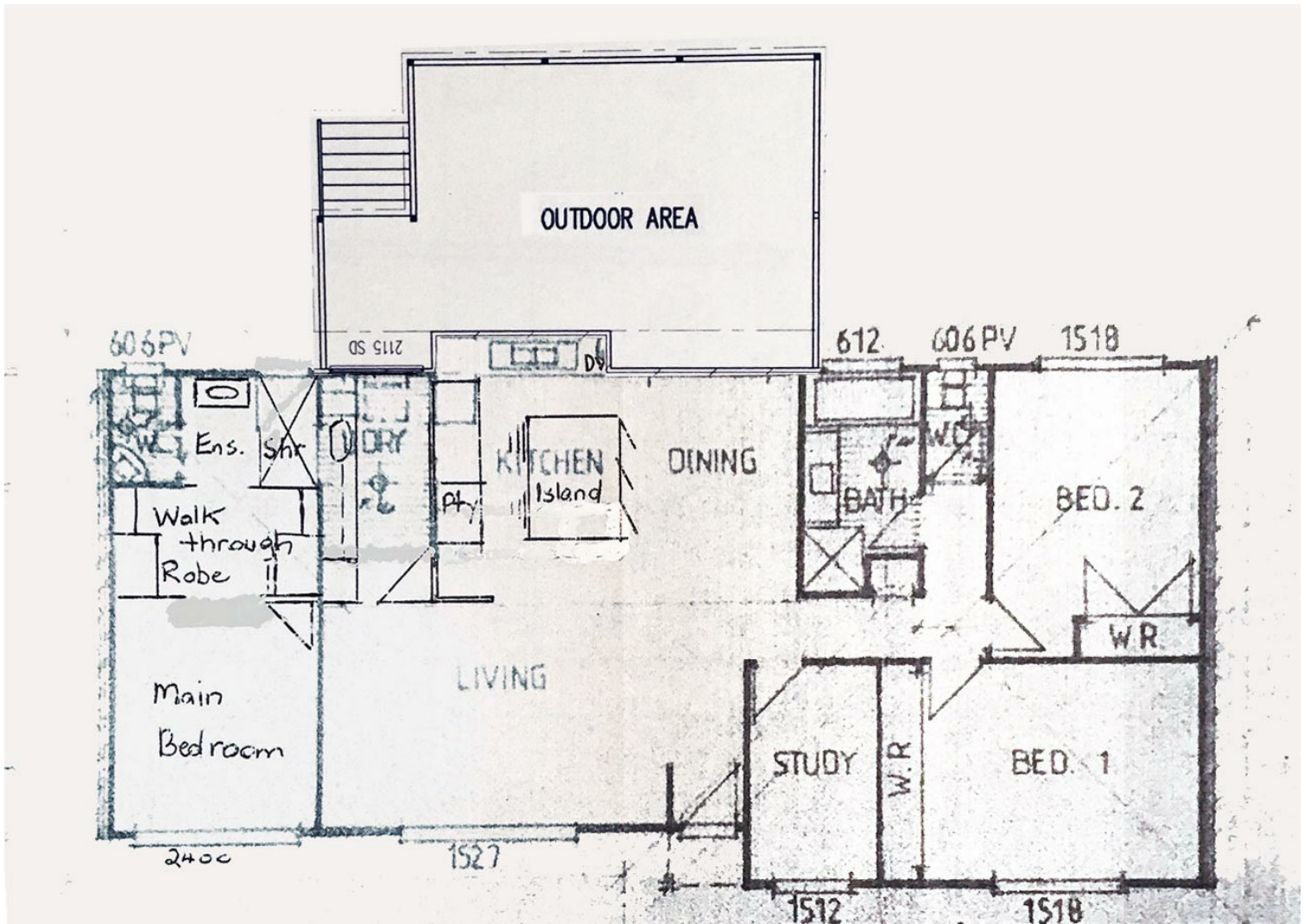
PRICE:  
\$350,000

OPEN FOR INSPECTION:  
N/A



**Yvonne Bradley**  
**0408181146**

yvonne@atrealty.com.au  
[www.atrealty.com.au](http://www.atrealty.com.au)



Disclaimer: Please note this floor plan is for marketing purposes and is to be used as a guide only. All dimensions are estimates only and may not be exact measurements.