



FOR SALE

LARGE TOP FLOOR UNIT - SITTING ON THE BORDER OF TWEED/COOLANGATTA OPEN HOME CANCELLED

Relax in comfort with this 2 bedroom spacious apartment, conveniently positioned on the borderline of Coolangatta, with Tweed facilities at your grasp.

KEY FEATURES :

- Tiled kitchen/living with plantation shutters to the balcony
- Kitchen with laminate benchtops
- Balcony off the living area looking out to the ocean
- Large master bedroom with built-in robe
- Bathroom/laundry
- Undercover car space

DETAILS :

- Body Corporate \$46.15 approx per week (inclusive of water)
- Rates \$2683.25
- Market rent \$500 per week

LOCATION :

' BARONESS ' apartments are conveniently positioned virtually on the Tweed/Coolangatta borderline which means you are just a short stroll to Bay Street, Tweed Mall Shopping Centre, Coolangatta Shops, World-class beaches, Hospital, and clubs - plus the bonus of seeing the spectacular new year firework celebrations on 2 time zones!

You will enjoy surfing & walks along the beautiful white sandy beaches & or just leave the car behind and head to the restaurants and nightlife that Coolangatta & Tweed offer.

The Gold Coast Airport & Southern Cross University is within a (7) minute drive.

AGENTS COMMENTS :

2 BED | 1 BATH | 1 CAR

PRICE:

\$495,000 - \$525,000

OPEN FOR INSPECTION:

N/A



Sharon Smythe

0412195500

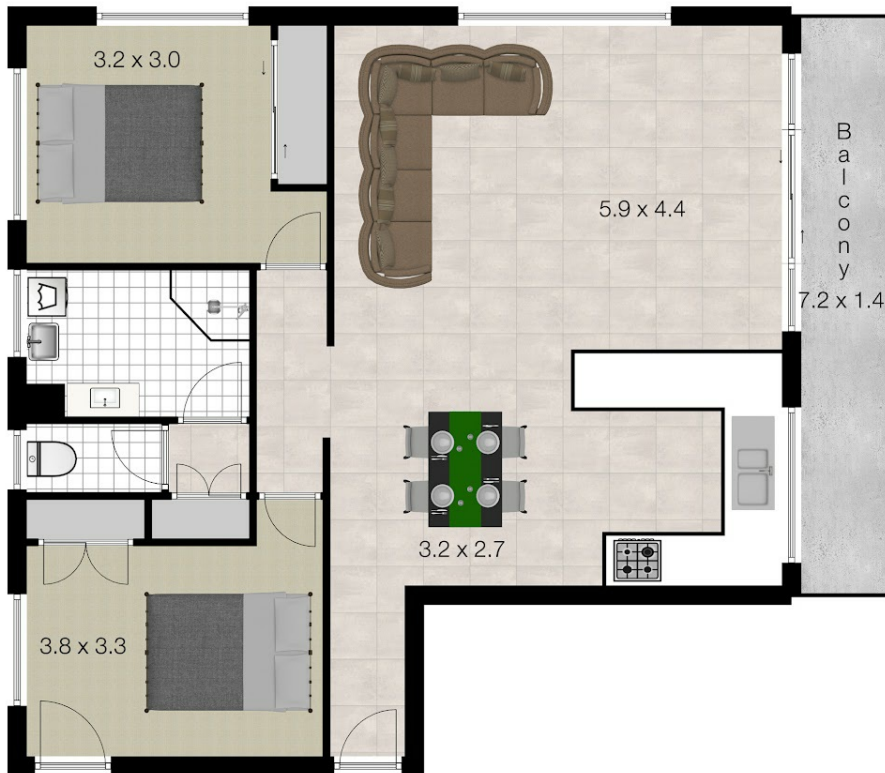
sharonsmythe@atrealty.com.au

smytheproperties.com.au

5/16-18 Thomson Street Tweed Heads NSW 2485



2 Bed - 1 Bath - 1 Car - Total Approximate Floor Area 97 sqm plus 21 sqm Carpark - Total 118 sqm On Title



Whilst every attempt has been made to ensure the accuracy of the floor plan. Measurements of doors, windows rooms and any other items are approximate and no responsibility is taken for any error, omission or misstatement. This plan is for illustrative purposes only and should be used as such by any prospective purchaser.

Disclaimer: Please note this floor plan is for marketing purposes and is to be used as a guide only. All dimensions are estimates only and may not be exact measurements.