



FOR SALE

QUITE, SAFE & CONVENIENT! A GREAT PLACE TO LIVE!

Best spot in the complex. "Duplex style" this lowset villa features side access for a wheelchair, a huge patio, side yard, garden and solar panels. All 3 bedrooms are built-in. The living area is open-plan, air-conditioned and opening to a large covered patio.

The lock up car accommodation has an auto door.

There are on-site Manager's & Swimming Pool.

Conveniently located an easy walk to the bus, schools, Aspley & Carseldine Shopping Centre's, Hornets Football and Aspley Bowls Clubs and The Good Life Health Club. Parks, walking tracks & bikeways are also close by.

A few minutes drive and you have Carseldine Train Station and Aspley Hypermarket with a major bus terminal, 7 mins drive to Westfield Chermside Shopping Centre and just 15km from Brisbane's CBD.

Private Inspections are encouraged.

Properties like this just don't last, be quick.

Rates \$348.25 per 1/4

Body Corp : Admin Fund \$427.69 per 1/4. Sinking Fund \$93.97 per 1/4

3 BED | 1 BATH | 1 CAR

PRICE:

Offers over \$389,000

OPEN FOR INSPECTION:

N/A

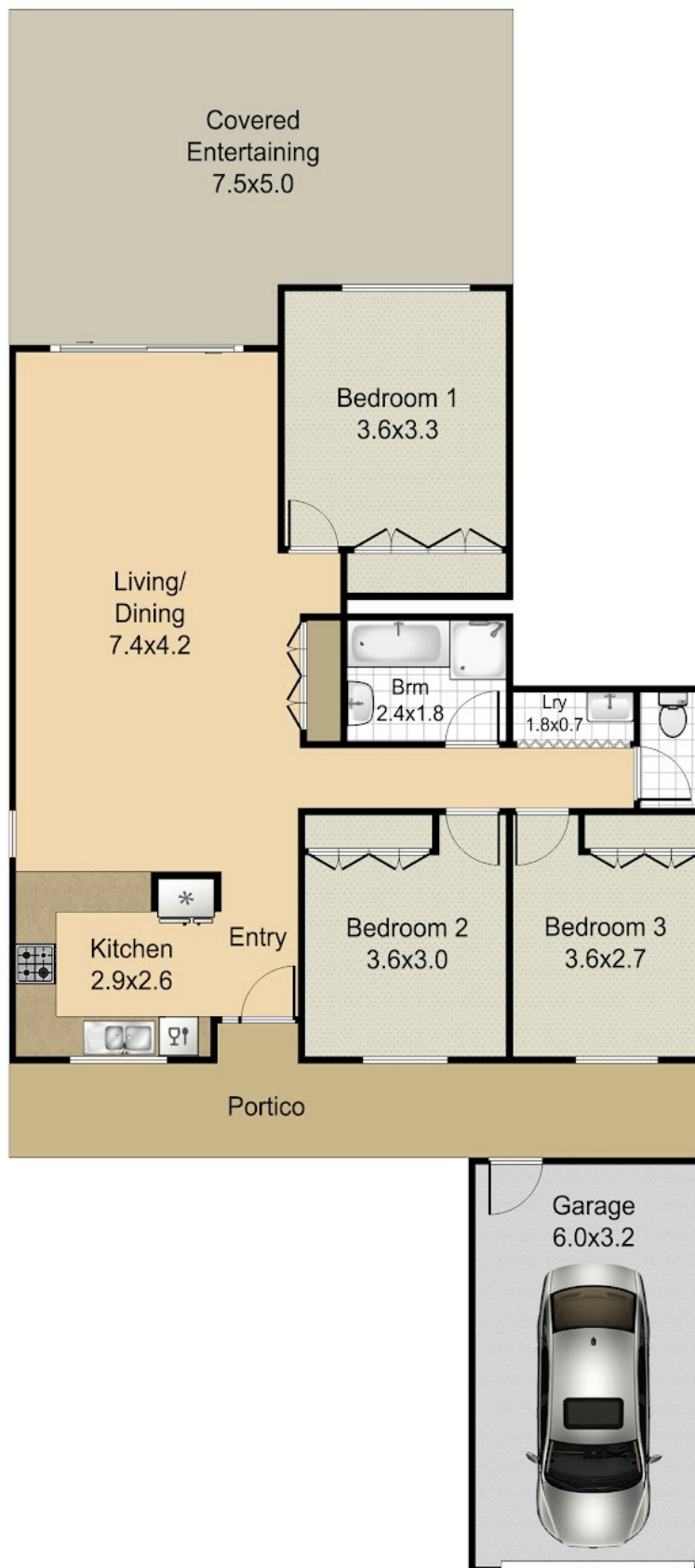


Peter Ellison

0414680744

peterellison@atrealty.com.au

www.atrealty.com.au



Disclaimer: Please note this floor plan is for marketing purposes and is to be used as a guide only. All dimensions are estimates only and may not be exact measurements.

Carseldine

External - 70