



# SOLD

## HUGE BEACHSIDE FAMILY HOME WITH TRIPLE GARAGE AND POWERED WORKSHOP

If location is important to you and you dream of a coastal lifestyle within walking distance to the beach, then this fantastic family residence set on a whopping 800sqm block, is the home for you. Enjoy stunning views from the impressive front verandah overlooking Secret Harbour's beautiful golf course and gorgeous lake, or take a short stroll to the local park, beach, golf or surf clubs, the options are endless in this premiere location.

The house itself was built in 2009 by Plunkett Homes and offers very spacious accommodation for all the family, presented in immaculate condition it boasts large open plan living areas that flow perfectly to suit families of all sizes and allow for easy indoor and outdoor entertaining. The well-appointed floor plan provides 4 large bedrooms, 2 spacious bathrooms, a huge media/lounge room, open plan casual dining/living with soaring high ceilings, a very well equipped kitchen with copious amounts of storage space and a butlers pantry.

Outside is equally as impressive. It has a spacious alfresco entertaining space, protected by cafe blinds, overlooking the impressive backyard which has an abundance of established planting, generous lawned areas, ample space to add a pool, A veggie patch and even a grape vine. Not only does this home boast an oversized triple garage with rear drive through access and extra height clearance, but there is a fantastic brick built powered workshop with a partitioned separate room inside and a shower & sink on the outside wall.

Features and benefits include:

- Ducted reverse cycle air-conditioning throughout
- Solar gas hot water system with gas booster
- Reticulation to lawns and garden beds
- Huge master suite with triple mirrored walk in robe and spacious en-suite
- Separate dedicated media/sitting room with double doors
- Light filled, open plan casual living area comprising meals and family areas with soaring high ceilings and feature fireplace
- Well appointed kitchen with heaps of storage, dishwasher, stone bench tops and large butlers pantry
- Great sized practical laundry located close to kitchen with direct access to additional under main roof verandah

4 BED | 2 BATH | 3 CAR

PRICE:  
\$670,000

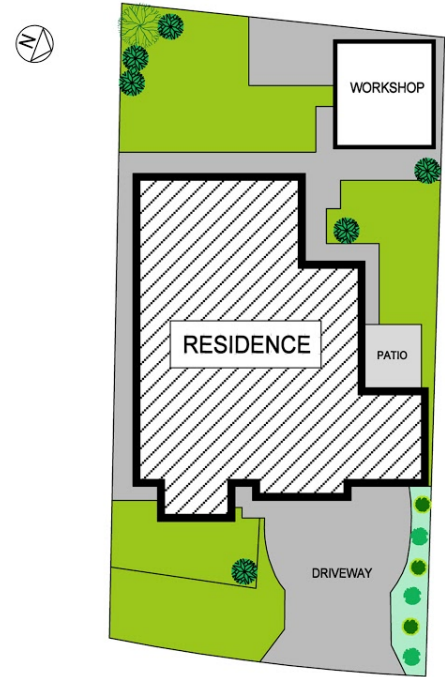
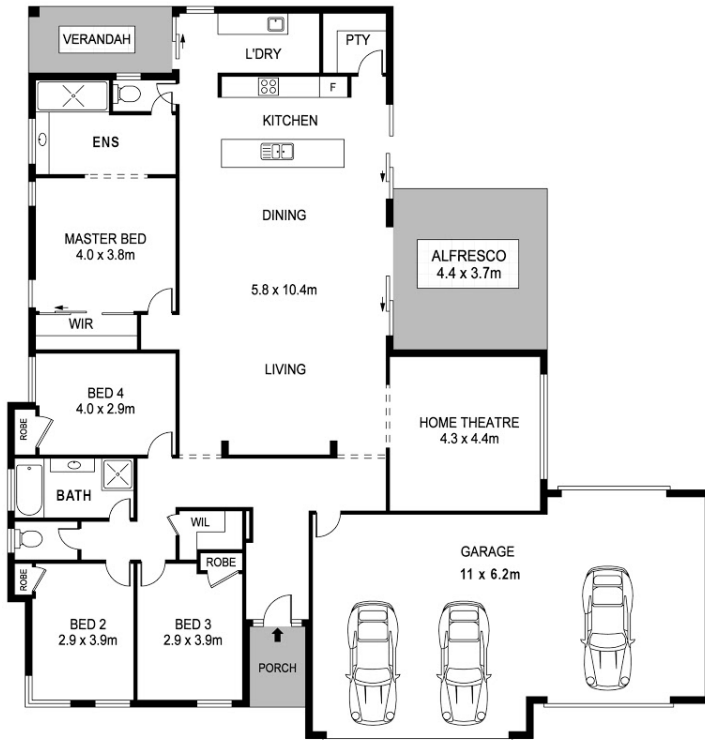
OPEN FOR INSPECTION:  
N/A



**Lisa Drylie**  
**0433048512**

[lisadrylie@atrealty.com.au](mailto:lisadrylie@atrealty.com.au)

[www.lisadrylierealestate.com](http://www.lisadrylierealestate.com)



REAL ESTATE FLOOR PLANS | [houseguru.com.au](http://houseguru.com.au)

Whilst every attempt has been made to ensure the accuracy of the floor plan contained here, measurements of doors, windows, rooms and any other items are approximate and no responsibility is taken for error, omission or mis-statement. This plan is for illustrative purposes only and should only be used as such by any prospective purchaser. The services systems and appliances shown have not been tested and no guarantee as to their operability or efficiency can be given.

Disclaimer: Please note this floor plan is for marketing purposes and is to be used as a guide only. All dimensions are estimates only and may not be exact measurements.