



# SOLD

## WHAT DREAMS ARE MADE OF

This stunning family abode was built by Hume and is set in a prime position on a huge 1,018sqm block of land along Stirling Drive, backing onto the golf course with spectacular views. Encompassing family functionality with style and grace spread over an impressive and expansive floor plan that showcases an array of modern comforts accompanied with vibrant interiors that can be adorned at every turn. The clever use of space has been maximised to ensure your family's level of comfort and practicality is of the highest priority. The home's superb setting is complemented by it's beautiful surroundings.

### Features Include:

- Front veranda with timber decking overlooking the manicured front yard
- Boasting 5 generously proportioned bedrooms with built in robes to 3 & a walk in robe to 2
- The master suite is located on the upper level & is a whole parents retreat that includes a walk in robe, ensuite, living room & a study / office
- Expansive open plan living area
- Dining room
- Media room
- Stunning well appointed kitchen with ample cupboard & bench space
- Huge walk in pantry
- Stainless steel appliances
- Dishwasher
- Gas cooking
- Breakfast bar with waterfall stone benchtop overlooking the meals area
- Bright & airy bathrooms, the main includes a bathtub
- Separate powder room
- Laundry includes built in bench & cupboard space with backyard access
- 2.7m High ceilings
- Increased sound proofing with upgraded full timber doors & additional wall insulation
- Plenty of internal storage throughout
- Zoned ducted air conditioning
- Plantation shutters
- Solar panels
- Large entertaining alfresco
- Fantastic sized backyard
- Back timber deck to rear of the yard is the perfect spot to soak in the magnificent views of the

5 BED | 2 BATH | 2 CAR

PRICE:  
\$1,270,000

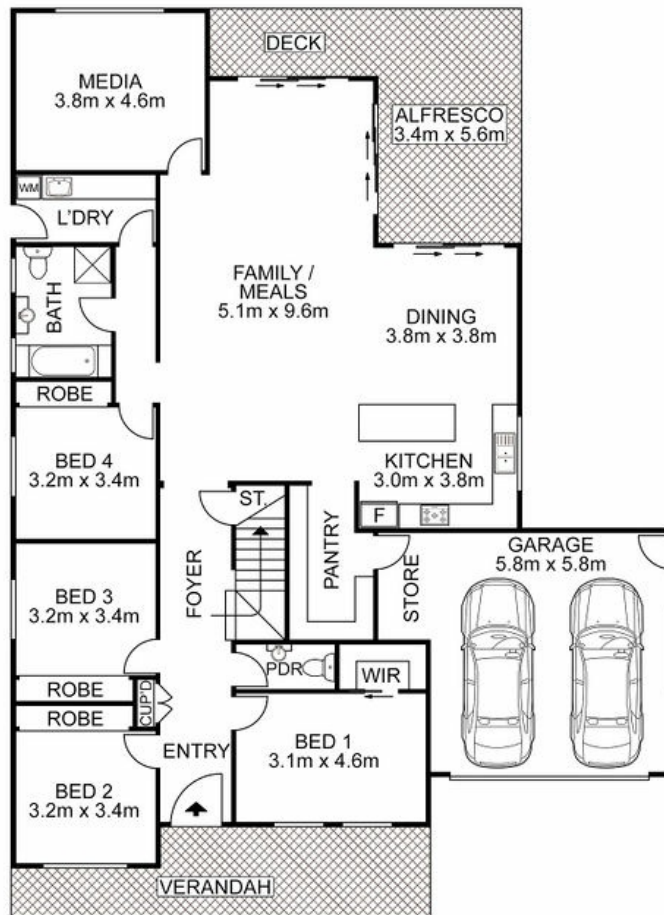
OPEN FOR INSPECTION:  
N/A



**Bobby Reynolds**  
0432173566  
bobby.reynolds@atrealty.com.au  
[agencycentralwilton.com.au](http://agencycentralwilton.com.au)



UPPER LEVEL



ENTRY LEVEL



Disclaimer: Please note this floor plan is for marketing purposes and is to be used as a guide only. All dimensions are estimates only and may not be exact measurements.

26 Stirling Drive, Wilton

**Bobby Reynolds** All measurements are approximate • Drawn for marketing purposes only  
 0432173566  
 bobby.reynolds@atrealty.com.au  
 agencycentralwilton.com.au

