



# SOLD

## BEAUTIFULLY PRESENTED BOUTIQUE APARTMENT - KIRRA BEACH

Kirra offers a relaxed lifestyle of stunning white sandy beaches, crystal clear waters and surrounded by natural beauty. A balance of famous surf breaks, vibrant cafes, and within walking distance from this beautifully presented apartment.

Kirra Breaks is a stylish architecturally designed apartment building comprising of 11 apartments with a resort style swimming pool.

### Features Include:

- This apartment is positioned on the 1st floor of this 3 storey apartment building.
- An open plan lounge and dining area opens to the entertainer's balcony.
- The kitchen is appealing in design and is complimented with the stone bench tops and white cupboard doors. The kitchen is complete with a privacy bench, electrical appliances, dishwasher, and a double sink.
- The master suite is designed around, natural light, with plenty of air flow and direct access to the balcony. Offers an ensuite and a walk-in robe.
- The second bedroom and main bathroom is designed away from the master suite.
- The main bathroom is designed in neutral tones and offers a stone vanity top, bath, and shower with a separate toilet.
- There is a spacious separate laundry with storage.
- Security basement car accommodation for 1 car and plenty of off street car parking.
- There is plenty of room to store the bikes and surfboards in the private storage room.

### Additional Features:

- Luxaflex plantation shutters in the bedrooms.
- Neutral coloured Luxaflex blinds in the remainder of the rooms.
- New ceiling fans and LED lighting in the living and master bedroom.
- New hot water system.
- Split system air conditioner.
- Security sliding doors to the balcony.
- Only 11 apartments within this boutique apartment building.
- Mainly owner occupiers but is also perfect for the astute investor.

2 BED | 2 BATH | 1 CAR

PRICE:  
\$615,000

OPEN FOR INSPECTION:  
N/A



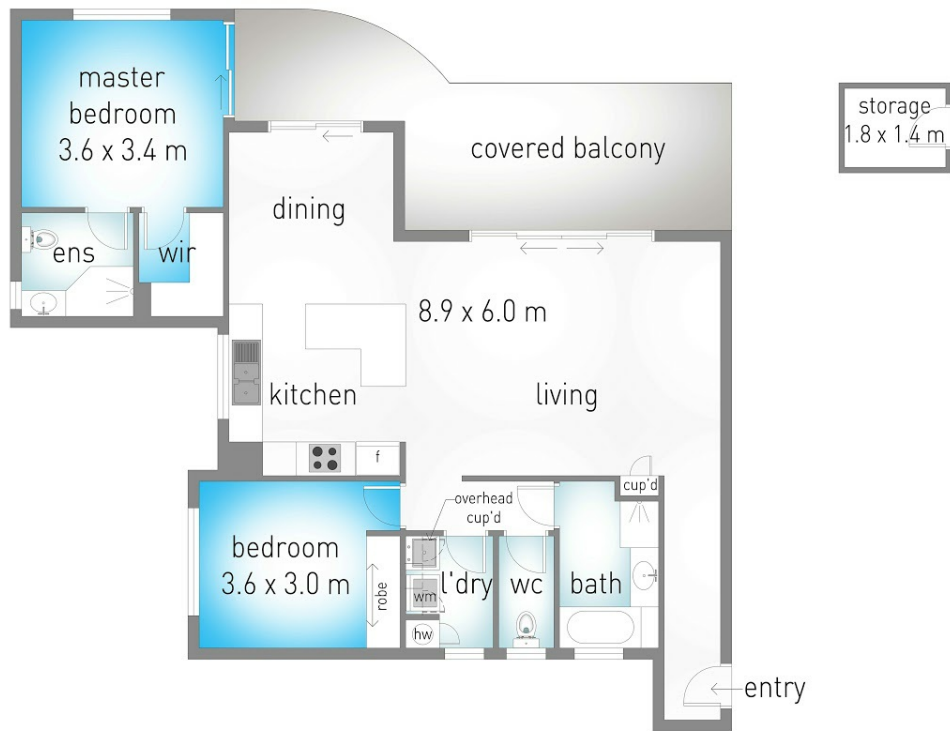
**Michelle Topper**  
0400362639  
michelle.topper@atrealty.com.au  
[www.atrealty.com.au](http://www.atrealty.com.au)

# 7/50 Miles Street, Coolangatta

2 2 1

internal: 93 m<sup>2</sup> | external: 20 m<sup>2</sup> | total: 113 m<sup>2</sup>

MICHELLE TOPPER  
REAL ESTATE  
0400 362 639



Dimensions are approximate. All information contained herein is gathered from sources we believe to be reliable. However we cannot guarantee its accuracy and interested persons should rely on their own enquiries.

Disclaimer: Please note this floor plan is for marketing purposes and is to be used as a guide only. All dimensions are estimates only and may not be exact measurements.

Michelle Topper  
0400362639  
michelle.topper@atrealty.com.au  
[www.atrealty.com.au](http://www.atrealty.com.au)

