

# SOLD

## OPEN HOUSE CANCELLED

Coolangatta Beach, Cafes and Restaurants is just a short flat walk from "Parkside View", a peaceful boutique well maintained apartment complex. Enjoy the beachside lifestyle this position offers. You will be pleasantly surprised when you view this property.

### Key features:

- Light filled, air-conditioned open plan living and dining area with access to the under-cover balcony. Great space to just sit back and relax.
- Good size kitchen with plenty of bench space, double sink, electrical appliances, and a dishwasher.
- Master suite offers a private balcony, built-in wardrobe, fan and a spacious ensuite with bath and a shower.
- Second bedroom is spacious and has a built-in-wardrobe.
- Light and airy main bathroom.
- European laundry.
- Blinds throughout.

- Only a few steps from the outside security door to the unit.
- Security intercom system.
- Secure basement car parking for 1 car + numerous visitors bay.
- Private gated entry to park and pathway to nearby beach and facilities.
- Only 5 min drive Gold Coast International Airport.

Fantastic tenant in place at \$460.00pw. Lease expires 30th May 2021.

### Outgoings:

- Strata Levy \$85.34per week
- Council Rate \$432.92 per quarter
- Water and Sewerage Rate \$381.15 per quarter

Do not miss this fantastic opportunity to purchase this spacious apartment within an easy walking distance to Coolangatta CBD.

2 BED | 2 BATH | 1 CAR

PRICE:  
\$570,000

OPEN FOR INSPECTION:  
N/A



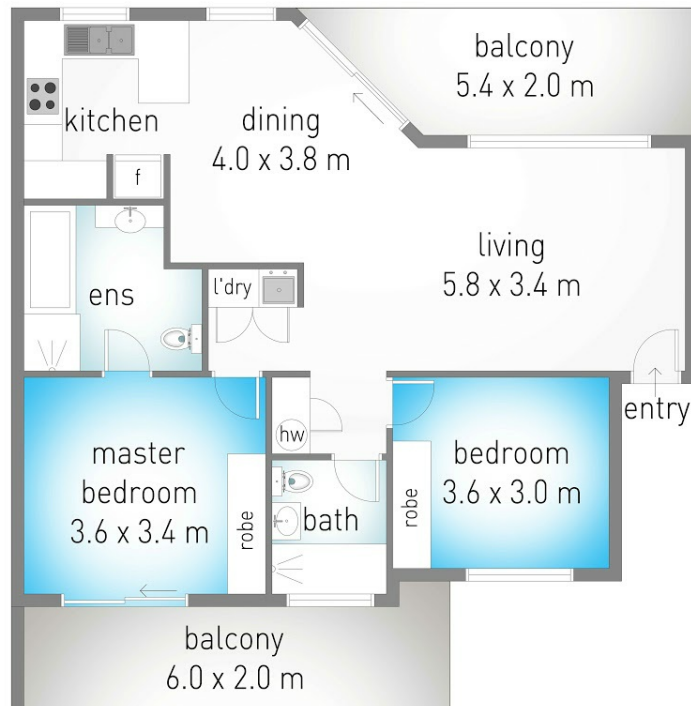
**Michelle Topper**  
0400362639  
michelle.topper@atrealty.com.au  
[www.atrealty.com.au](http://www.atrealty.com.au)

# 6/37 Dixon Street, Coolangatta

🏠 2 🛏 2 🚗 1

internal: 85 m<sup>2</sup> | external: 22 m<sup>2</sup> | total: 107 m<sup>2</sup>

MICHELLE TOPPER  
REAL ESTATE  
0400 362 639



Dimensions are approximate. All information contained herein is gathered from sources we believe to be reliable. However we cannot guarantee its accuracy and interested persons should rely on their own enquiries.

Disclaimer: Please note this floor plan is for marketing purposes and is to be used as a guide only. All dimensions are estimates only and may not be exact measurements.