



SOLD

STUNNING CITY VIEWS!

Perched high on the hill with stunning city views & impressive in its sheer size, this two storey, quality built residence offers multiple living spaces with an upstairs parents retreat that is well ... simply ENORMOUS!

UPSTAIRS – PARENTS RETREAT or RENT OUT SEPARATELY

- King size 'plus' master bedroom big enough for the biggest of bedroom suites at 4.8 x 5.5m in size, generous WIR with laundry chute, lovely big windows with beautiful views
- Ensuite is enormous in size with two separate vanity stations, separate bath, shower & toilet with door
- Home Office/5th bedroom with beautiful tree top views, BIR
- Massive lounge room at 4.6 x 6.9m with large windows looking out to stunning city views
- Ducted evaporative airconditioning

GROUND FLOOR – FAMILY LIVING

- Natural light filled entrance hall with double front doors & indoor garden beds you can fill with greenery
- Elegant timber staircase leading to parents retreat
- Formal dining room which could be utilised as a 4th lounge room or as your ground floor home office
- Open plan family kitchen with separate meals area, storage galore, lots of bench space, gas cooking, wall oven. Overlooking the alfresco & pool area
- Open plan family room plus games room separated by cosy wood stove heater & a dividing partition – fabulous family space!
- Bedrooms 2,3,4 generous in size, all with BIR's & generous windows
- Huge family size bathroom will impress with separate bath, shower & vanity
- Separate toilet
- Laundry is again family size with sliding door access to clothes line

OUTDOOR

- Double garage with shoppers entrance to front porch & a second door to rear yard
- Big workshop with power
- Large modern alfresco, paved overlooking the pool
- Below ground salt water pool including all equipment
- Bore reticulated gardens – easy care established rose garden with mature frangipani tree & lovely rockery gardens
- Back yard access through 3rd garage roller door
- NBN connected, gas bayonets, airconditioning, wood heater

4 BED | 2 BATH | 2 CAR

PRICE:
\$880,000

OPEN FOR INSPECTION:
N/A

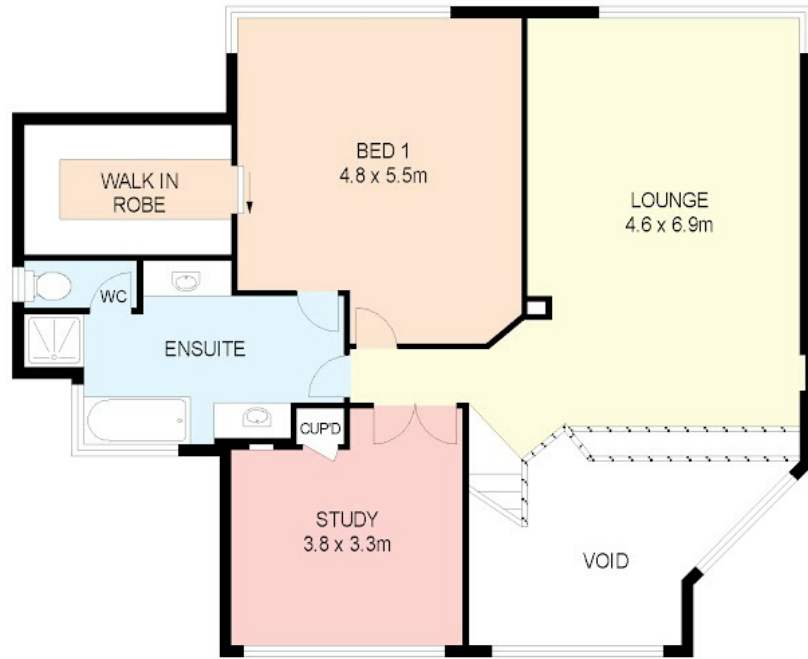


Jill Groves | Chloe Leggett Team

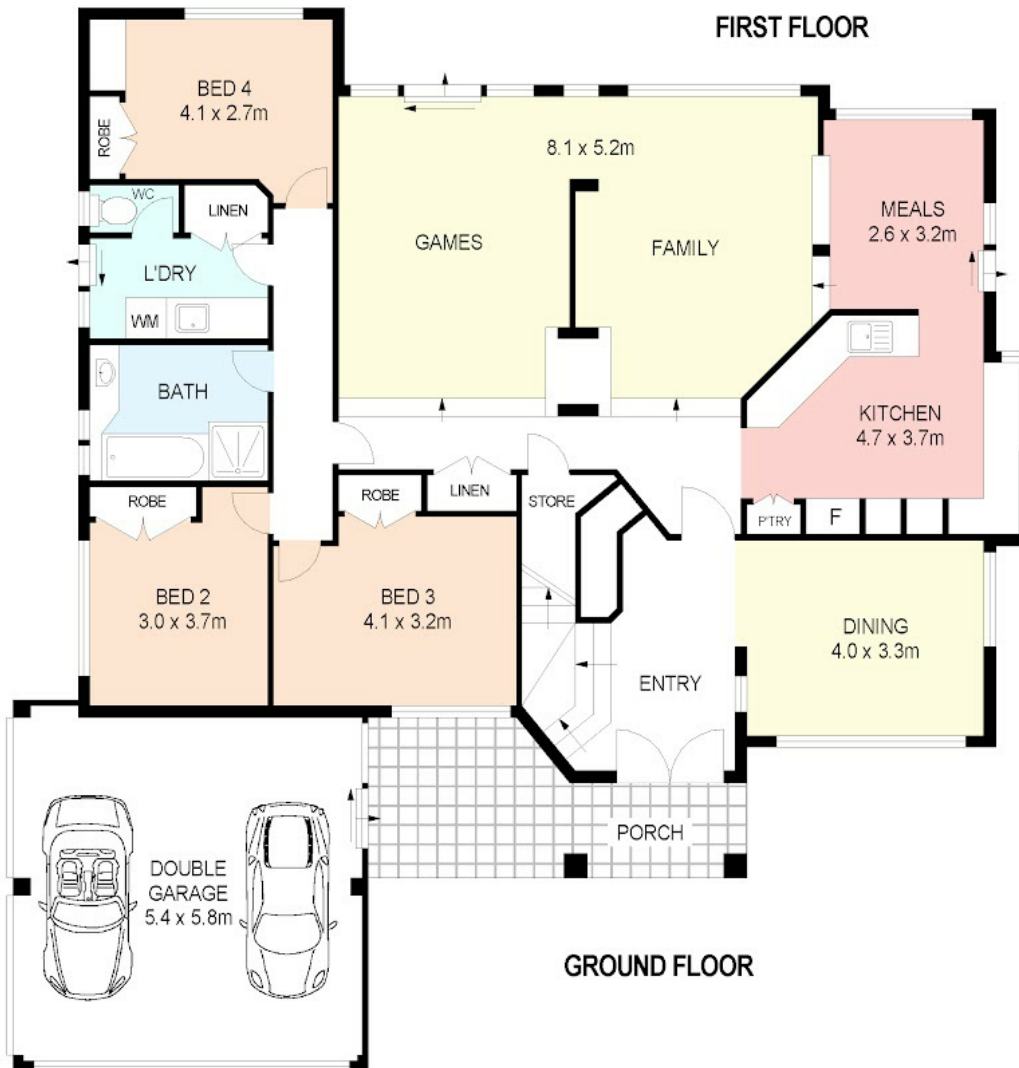
0408765240

jillgroves@atrealty.com.au

www.atrealty.com.au



FIRST FLOOR



GROUND FLOOR

Disclaimer: Please note this floor plan is for marketing purposes and is to be used as a guide only. All dimensions are estimates only and may not be exact measurements.

@reality 11 Oakland Heights Leeming

Jill Groves | Chloe Leggett Team

0408765240

jillgroves@atrealty.com.au

www.atrealty.com.au

Not to scale • All measurements are approximate • Drawn for presentation purposes only

@reality