

FOR SALE

30 MULLIGAN DRIVE, WATERVIEW HEIGHTS, NSW, 2460

5  | 1  | 3 



VICTORIAN INSPIRED HOMESTEAD ON PRIVATE ACRES

PRICE: Just Listed

OPEN FOR INSPECTION:
N/A

Anything rare or unique is generally considered of higher value. This rings true in markets where there is more buyer demand than buying opportunities. This also rings true when the architecture is unique. We certainly have a Rare Jewel in the Crown of Waterview Heights on offer here...

Carriage loop entry gives access to the home that sits back from the road in its very own bush setting of approximately 2.84 acres. Instantly it demands attention with its Victorian inspired accents. Clearly it is a one-of-a-kind design and rumour has it that it was built with a high degree of expertise.

Sandstone block construction, ornate tile roofing, concrete pillars, stained glass, feature windows, extensive use of hardwood timber alongside the featured high-pitched ceilings emit absolute style and quality. Three spacious bedrooms are featured upstairs with two opening onto the massive entertainment area. The master bedroom is of double size and again, thoughtful period features are showcased throughout to keep with the style of the home.

To the front there is a noble study under a conical roofline. This room has taken bunk beds in the past so it can certainly be considered a single bedroom. The living room is grand and spacious and the kitchen stately, with the bonus of upgraded modern appliances. The bathroom is well equipped with a shower and large oval bath with a second toilet conveniently located.

Once a blank canvas, downstairs is now 60% (approx.) converted with still plenty of space to develop whatever your heart desires. Large home office? Art studio? Workshop? Another




Kylie Swift // 0488 161 621

kylie@virtueproperty.com.au // www.virtueproperty.com.au



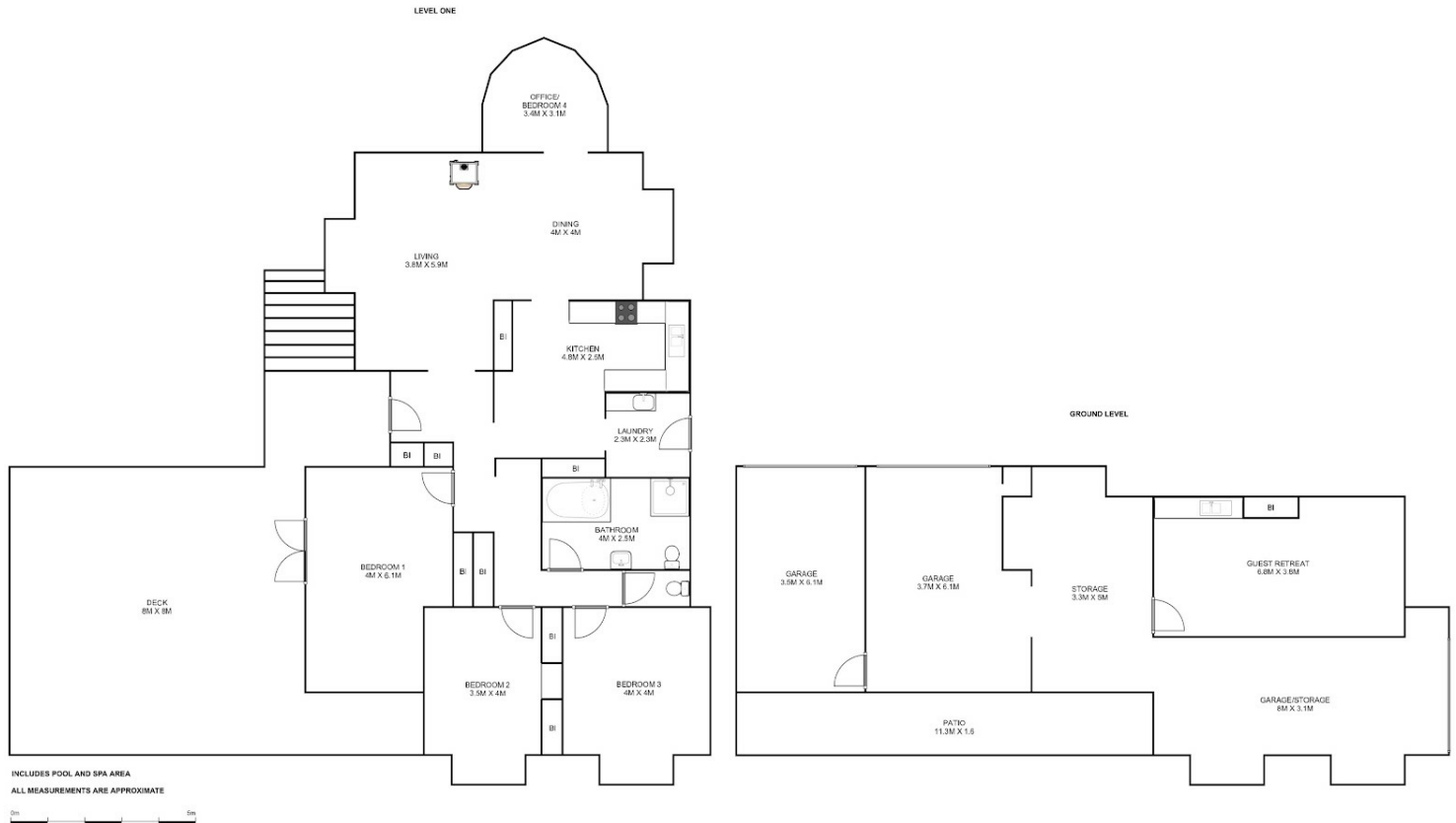
FOR SALE

30 MULLIGAN DRIVE, WATERVIEW HEIGHTS, NSW, 2460

5  | 1  | 3 



30 Mulligan Drive
Waterview Heights



Kylie Swift // 0488 161 621

kylie@virtueproperty.com.au // www.virtueproperty.com.au

