



SOLD

THE FULL PACKAGE – ACREAGE, POOL AND LOCATION

Presenting to the market this magnificent acreage lifestyle four bedroom plus study residence big enough to bring the family, the caravan, the boat and the horse situated on an impressive 7,000m² at the end of a very quiet cul-de-sac in this tightly held pocket of Cashmere with the convenience of restaurants and the local IGA just minutes away!

Do you yearn for some space to breath, raise a family where the kids can actually get out and play and still have the comfort and accessibility to good schools and amenities? This is acreage living at its finest!

This home is comprised of multiple living spaces, whether you want a quiet lounge area by the wood burner, a family media room, a games room with pool table the options are endless and you have plenty to choose from. Here you are spoilt with choice and you will be impressed by the cathedral ceilings and architectural lines on offer. My favourite living space would be the family room in the hub of the home, when you slide the barn style door open, the sheer size of the room welcomes you in with an abundance of natural light. The air-conditioning is a plus and this room also opens out to the alfresco area making it super functional.

The hub of the home is an entertainer's paradise, a chef's kitchen for sure! Modernized, enveloping first class appliances including Belling 7 burner gas stove 3 ovens with warmer, stone bench tops, 2pac cabinetry, plenty of storage, great size breakfast bar for milling around and chatting about the days events while the evening meal is being prepared whilst enjoying the view of the block. The open plan kitchen and dining area open seamlessly through bi-fold doors to the covered alfresco area which is MASSIVE, the perfect place for a long lunch whilst the kids and fur babies run around the yard, play in the cubby house or swim in the 14x4m heated inground saltwater swimming pool!

The Master Suite of the home is located well away from the other bedrooms giving that retreat separation and resort feel. With its own modern ensuite featuring double shower, double vanity, and not to mention the heated towel rail it's the little luxuries that we look forward to at the end of the day! There is also a walk in robe, near new air-conditioner and views out to the sparkling inground pool.

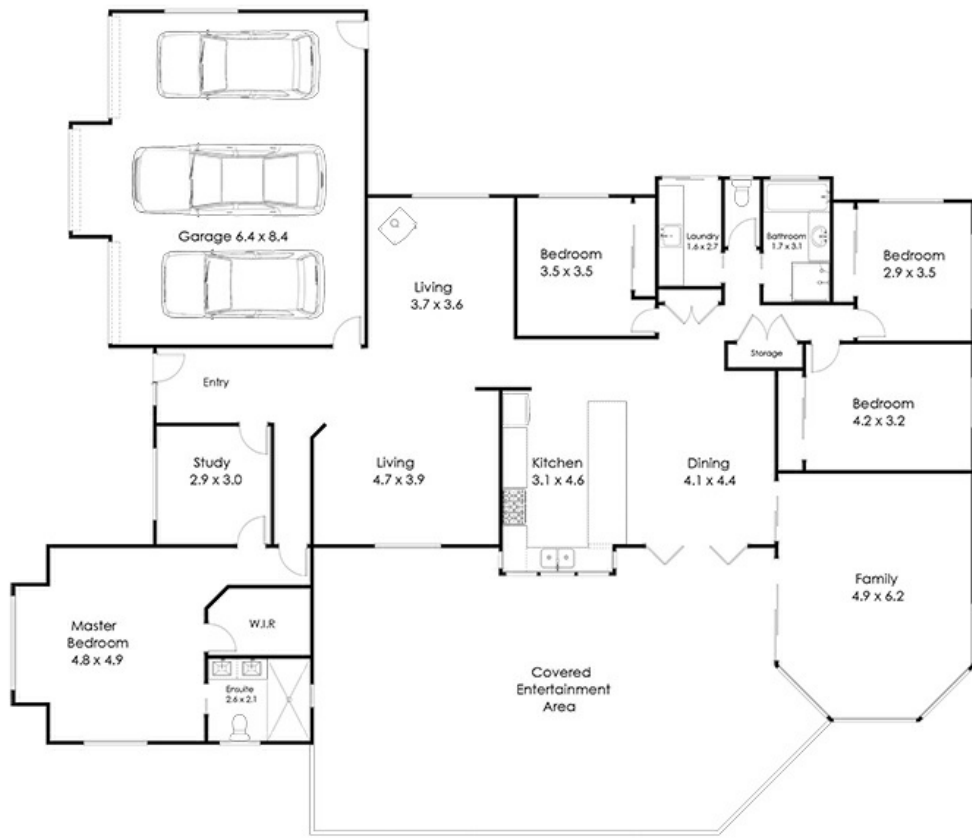
4 BED | 2 BATH | 3 CAR

PRICE:
\$1,100,000

OPEN FOR INSPECTION:
N/A



Natalie Johnston
0419689309
natalie@atrealty.com.au
[Natalieatrealty](#)

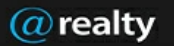


Total Living area 268 sqm

17 Telopia Court Cashmere 4500

Whilst every attempt has been made to ensure the accuracy of the floor plan contained here, measurements of doors, windows rooms and any other items and structures are approximate and no responsibility is taken for any error, omission or mis-statement. Bathroom and Kitchen fittings, cupboards and door types and laundry appliances and windows are tokens and approximate the actual fitting installed.

This plan is for illustrative purposes and should be used as such by any prospective buyer. Plan drawn by Eagle Eye Photography Service, www.eagleeyenq.com.au Copyright 2021. All rights reserved. No reproduction without license, contact photographer for more information.



Disclaimer: Please note this floor plan is for marketing purposes and is to be used as a guide only. All dimensions are estimates only and may not be exact measurements.