



SOLD

DOUBLE STORY 3 BEDROOM "PENTHOUSE" WITH WATER VIEWS!

DO NOT miss out on viewing this one. Situated over 2 floors with stunning views of the Broadwater from both balconies, 3 bedrooms with master on the top level with ensuite & walk in robe – the opportunities are endless. You can live in & enjoy the Gold Coast lifestyle, rent out to long term tenants or place in the holiday let and reap the rewards. Walking distance to cafe's & restaurants, The Grand Hotel, Charis Seafood, Labrador boat ramp and of course.. The stunning Broadwater and parklands.

Property Features –

- * 3 bedrooms – Master with ensuite & walk in robe
- * Top floor bedroom has access to the massive balcony with private spa bath over looking the Broadwater
- * Updated kitchen and tiles - carpet in bedrooms
- * Open plan living, dining & kitchen area which flows out on to the balcony overlooking the pool with views to the Broadwater!
- * Secure Tandem car parking
- * European Laundry
- * Aircon & ceiling fans throughout
- * Price includes ALL FURNITURE & white goods

Complex facilities:

- * Large in-ground pool and spa resort style
- * BBQ Gazebo with BBQ facilities
- * Games Room
- * Gym

As this property is currently in the holiday let please call now to organise your own private inspection – 0404 232 429

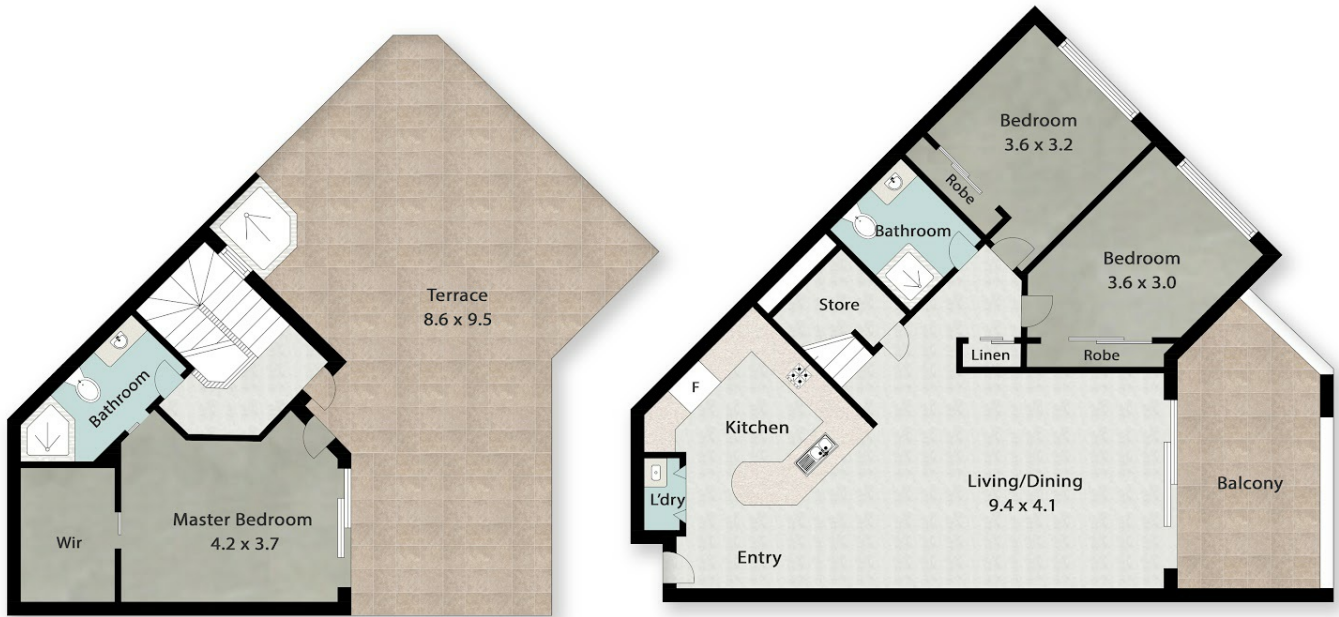
3 BED | 2 BATH | 2 CAR

PRICE:
\$580,000

OPEN FOR INSPECTION:
N/A



Kera Thomas
0404232429
kera@atrealty.com.au
www.atrealty.com.au



303/392 Marine Parade, Labrador
 INTERNAL FLOOR AREA 112m²
 EXTERNAL FLOOR AREA 64m²
 TOTAL AREA 176m²

KRT | **@realty**
 Property Group

Kera Thomas 0404 232 429

Whilst every attempt has been to ensure the accuracy of the floor plan contained here, measurements of doors, windows, rooms, and any other items are approximate and no responsibility is taken for any error, omission, or mis-statement. This is for illustrative purposes only and should be used as such by any prospective purchaser. www.picsandmortar.com

Disclaimer: Please note this floor plan is for marketing purposes and is to be used as a guide only. All dimensions are estimates only and may not be exact measurements.

Kera Thomas
0404232429
 kera@atrealty.com.au
www.atrealty.com.au

@realty