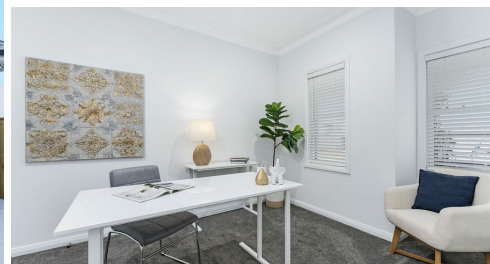


1 CRACKNELL STREET WILTON



FOR SALE

DEPOSIT TAKEN - OPEN HOME CANCELLED

Welcome to 1 Cracknell Street, Wilton. This brand new masterpiece was crafted by Jeff Mathews Homes and is truly a sight to behold. It's expansive floor plan is impressive, showcasing a modern and elegant style which flows through the home with ease. The level of comfort and sophistication accompanied with practicality has been maximised to ensure your quality of living is achieved effortlessly. The home exhibits luxurious features throughout with no expense spared on the premium fixtures and fittings that compliments the home setting perfectly.

Features Include:

- Front porch overlooking the manicured front yard
- Four generously proportioned bedrooms with built in robes
- The master suite includes his and hers walk in robes and an ensuite with dual basins, as well as LED feature lighting to vanity
- Study / home office with built in storage
- Grand formal living room with two toned chair rail moulding walls and feature cornices, or perfect as a theatre room
- Open plan family room with a TV nook & raked ceilings
- Open plan dining room
- Activity / games room
- Exquisitely designed modern kitchen with ample cupboard & bench space
- Butlers pantry includes extra sink & cupboard space
- Gas cooking
- Modern black appliances by Smeg & DeLonghi
- Breakfast bar overlooking open plan living
- Bright & airy main bathroom includes luxurious freestanding bathtub & a frameless shower
- Oversized laundry with built in cupboards & access to the back yard
- Zoned ducted air conditioning
- Ample internal storage
- Undercover alfresco
- Low maintenance manicured backyard
- Triple remote garage with internal access
- Side access
- 762sqm block

Bingara Gorge is a prestigious estate located in the semi-rural town of Wilton. Widely known for

4 BED | 2 BATH | 2 CAR

PRICE:

Just Listed

OPEN FOR INSPECTION:

N/A

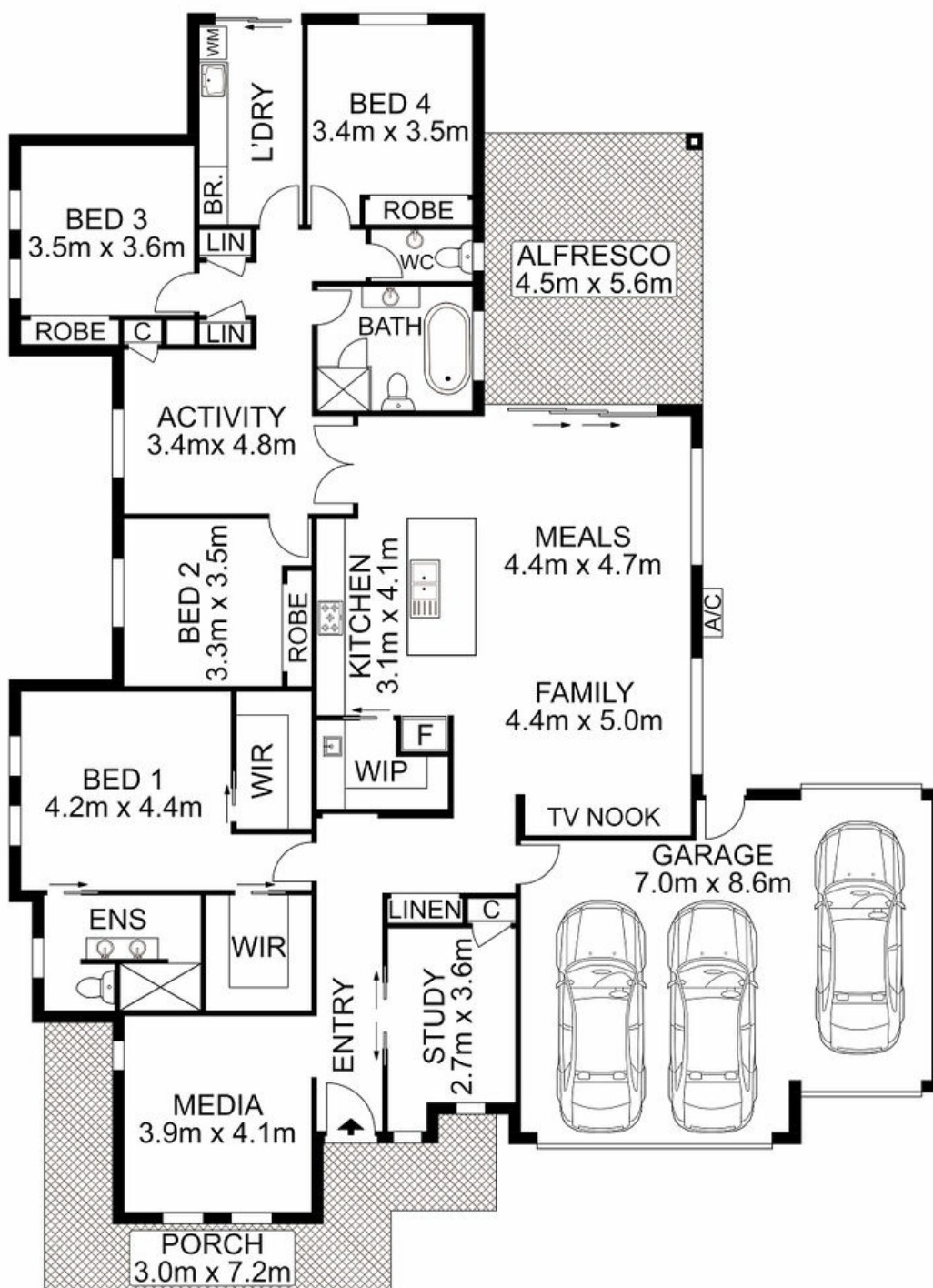


Adam Bryant

0455672323

adam@atrealty.com.au

www.atrealty.com.au



AGENCY

Disclaimer: Please note this floor plan is for marketing purposes and is to be used as a guide only. All dimensions are estimates only and may not be exact measurements.

1 Cracknell Street, Wilton

Adam Bryant • All measurements are approximate • Drawn for marketing purposes only

0455672323

adam@atrealty.com.au

www.atrealty.com.au

