

22 BRICKFIELD STREET RUSE



FOR SALE

HIGH AND MIGHTY WITH MAGNIFICENT VIEWS

This family home is packed full of unique surprises spread over an impressive two story floor plan. Nothing about this home is average, from entry to exit the wonderful features can be adorned at every turn. The real focal point however, is the expansive and stunning views that can be enjoyed from the front veranda, it is truly a sight to behold. The self contained downstairs area is perfect accommodation for the in-laws or as a teenager's retreat, it is fully equipped with everything your guest will need to have a home away from home.

Features Include:

- Front veranda has expansive, gorgeous views as far as the eye can see of lush greenery & mountains, it is the perfect place to spend your time
 - Boasting four generously proportioned bedrooms with built in robes & polished timber floors
 - Master suite includes an ensuite with a frameless shower, built in robe, split system air conditioning & a ceiling fan
 - Formal living room with polished timber floors, split system air conditioning & access to the front veranda
 - Formal dining with an impressive large arch window filling the room with natural light
 - Tastefully designed kitchen with ample cupboard & bench space
 - Stainless steel appliances
 - Dishwasher
 - Built in microwave
 - Main bathroom has floor to ceiling tiled & combined bath/shower
 - Plenty of internal storage options
 - Plantation shutters
 - Back alfresco is perfect for entertaining, it can open up to allow the sunlight & fresh air or the black roller blinds can be lowered so the room is enclosed. A ceiling fan, downlights & a sink are included
 - The backyard is low maintenance and includes manicured established gardens
 - Built in pizza oven
 - Garden shed
 - Side access
 - Double garage with remote & internal access
 - 551.3sqm Block of land
- Downstairs Retreat:
- Fully equipped kitchen with ample cupboard & bench space

4 BED | 2 BATH | 2 CAR

PRICE:

\$799,000 - \$849,000

OPEN FOR INSPECTION:

N/A

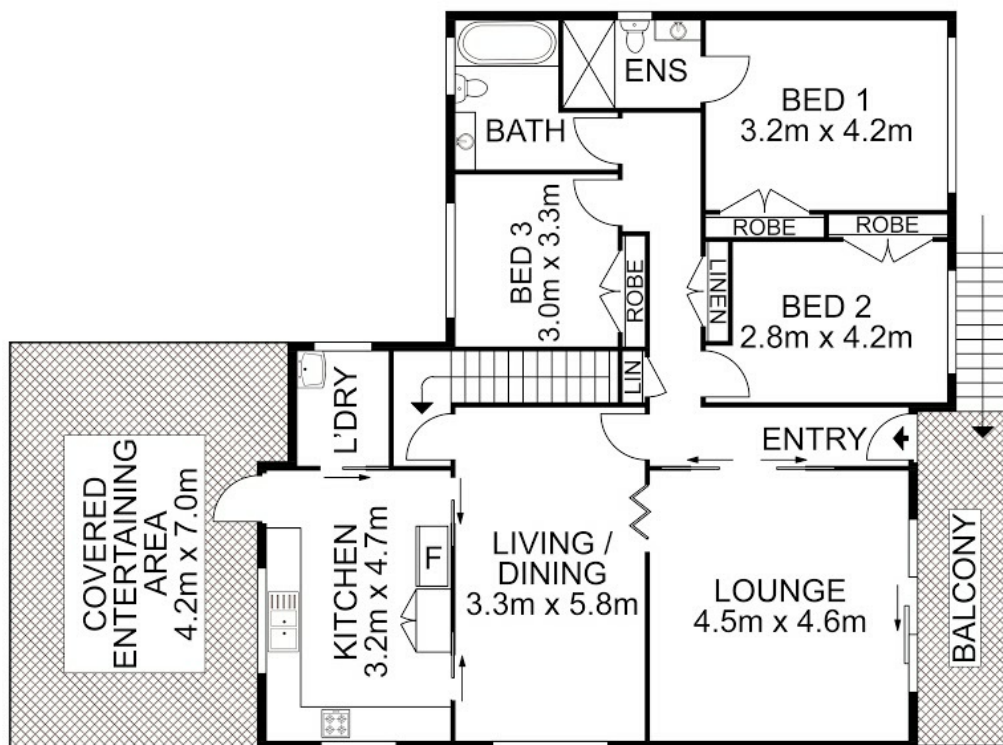


Huss Al Salemi

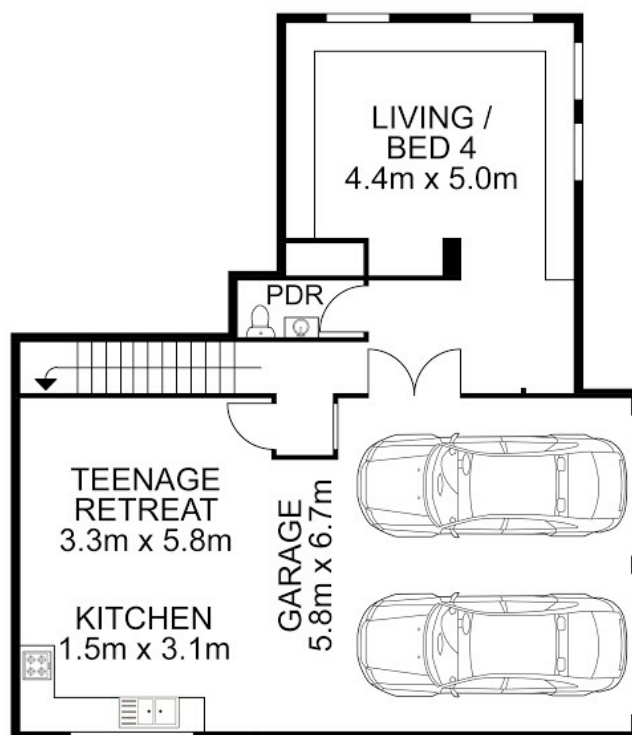
0411699419

huss@atrealty.com.au

www.agencycentral.com.au



UPPER LEVEL



ENTRY LEVEL



Disclaimer: Please note this floor plan is for marketing purposes and is to be used as a guide only. All dimensions are estimates only and may not be exact measurements.

22 Brickfield Street, Ruse

Huss Al Salemi • All measurements are approximate • Drawn for marketing purposes only

0411699419

huss@atrealty.com.au

www.agencycentral.com.au

