

# Sold

6 FAIRMONT COURT, BANORA POINT,  
NSW, 2486



4 | 2 | 2



## SOLD BY SUZANNE FOSS

SOLD by Suzanne Foss. POINT VUE HOME-ELEVATED WITH WATER VIEWS! This sensational home is built over two levels and defines the concept of modern living. Double entry doors welcome you to this fabulous family home and the outlook draws you in.

A bright and sunny aspect, this peaceful oasis is situated in a sought-after pocket of Point Vue high above Flame Tree Park.

The modern kitchen is an open plan, beautifully appointed with a breakfast bar and lots of counter and cupboard space.

The three living areas are ideal for the family, add to that another three outdoor entertaining areas. All overlook the peaceful views of the Terranora Broad water.

The home study is bright and perfect for a home-based business.

All the bedrooms are spacious, where the master is super king, it has a walk-in closet and the ensuite has a double vanity, shower and tub.

Quality carpets are throughout, in addition to a stunning wood staircase and heaps of storage within the home and in the garage.

To top it off there is ducted and zoned air conditioning, a must for our balmy days.

What better way to start the day than a dip in the fabulous contemporary pool with its vanishing edge surrounded by rich bird life and nature views.

It's a low maintenance block so you can spend your time having fun in the sun. There is room for a caravan.

Centrally located yet private, quiet and minutes to area schools, transport, beaches, fabulous shopping and the Gold Coast International Airport.

## Suzanne Foss // 0411 851 173

[suzanne@suzannefossrealestate.com.au](mailto:suzanne@suzannefossrealestate.com.au) // [suzannefoss.com.au](http://suzannefoss.com.au)



# Sold

6 FAIRMONT COURT, BANORA POINT,  
NSW, 2486



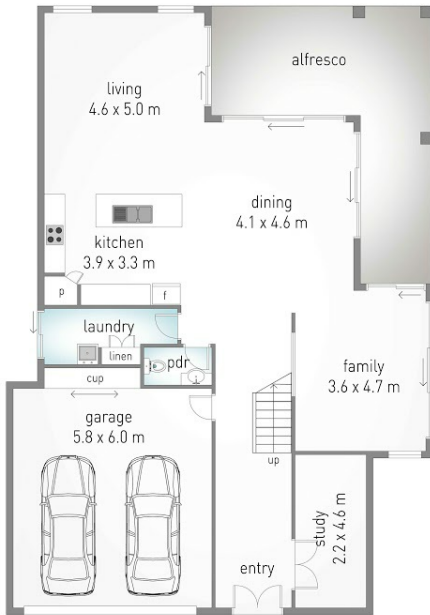
**Suzanne  
FOSS**  
REAL ESTATE

4 | 2 | 2

## 6 Fairmont Court, Banora Point

4 2 2 851 m<sup>2</sup>  
internal: 293 m<sup>2</sup> | external: 47 m<sup>2</sup> | total: 340 m<sup>2</sup>

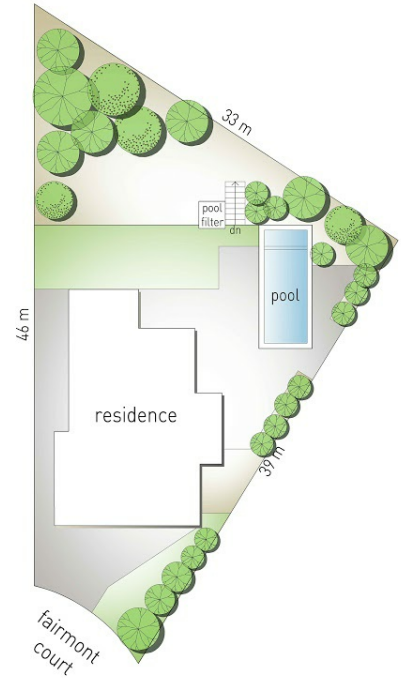
**@realty**  
Suzanne Foss 0411 851 173



ground level



upper level



site plan



Dimensions are approximate. All information contained herein is gathered from sources we believe to be reliable. However we cannot guarantee its accuracy and interested persons should rely on their own enquiries. north

# Suzanne Foss // 0411 851 173

[suzanne@suzanefossrealestate.com.au](mailto:suzanne@suzanefossrealestate.com.au) // [suzanefoss.com.au](http://suzanefoss.com.au)

