

SOLD

LARGE 3+ OFFICE HOME WITH REAR ACCESS

Located in popular Caravonica on 708m2 of land this solid home boasts 3 very large bedrooms with built in robes and split system air-conditioning as well as a separate office. The fully tiled living and dining areas are also a good size as is the great kitchen featuring stainless steel appliances, loads of cupboard space and gas cooktop. You will love entertaining from your own separate built in bar area which flows out to the covered outdoor entertaining area and gorgeous inground pool. There is a great workshop space and lock up shed which can be accessed through double gate rear entry providing parking for a van or boat plus there is solar power (4.4k/w) on the roof to keep the power bills down. The central bathroom is neat and tidy plus a good size laundry and second toilet also service the home. Centrally located a short commute to the shopping centres of Smithfield and Redlynch , plus walking distance to Sky Rail this one will be popular!

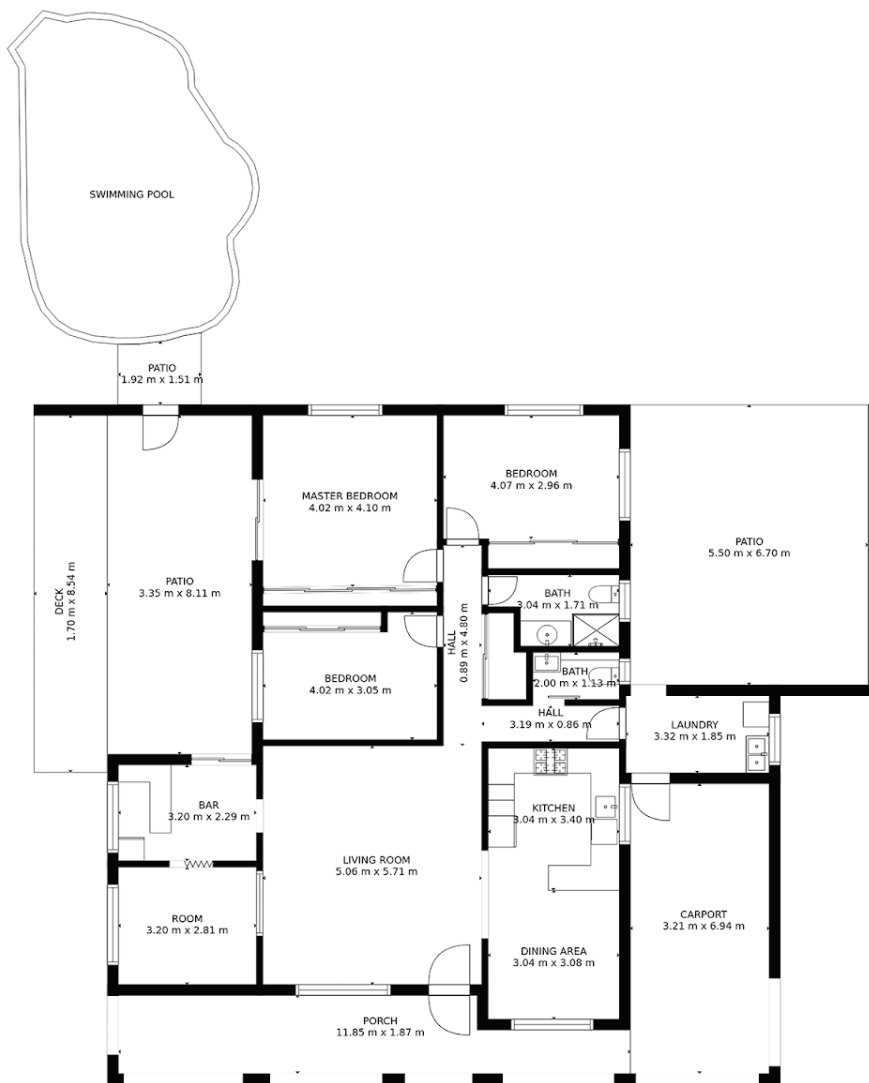
3 BED | 1 BATH | 2 CAR

PRICE:
\$425,000

OPEN FOR INSPECTION:
N/A



Neil Turnbull
0408757870
neilturnbull@atrealty.com.au
www.atrealty.com.au



SIZES AND DIMENSIONS
ARE APPROXIMATE,
ACTUAL MAY VARY.

Disclaimer: Please note this floor plan is for marketing purposes and is to be used as a guide only. All dimensions are estimates only and may not be exact measurements.