



SOLD

MAGICAL LIFESTYLE AWAITS.....

Get away from the rat race to the very much sought-after Guanaba Valley. Set on a massive 10.26 acres (4.16 hectares) This 4-bedroom family home has a tree house feeling with floor to ceiling windows that capture the essence of peace and serenity overlooking the good-sized dam and property. This truly is a magical place to live with most owners holding onto their properties for years. NBN wireless connected is a real bonus if you work from home and the school bus stops across the road. 15 minutes from Pacific Pines, Schools, shops and the M1 motorway providing easy access to Brisbane and Gold Coast.

Features include:

- *4 good size bedrooms or 3 plus a study
- *Master has ensuite / walk in robe, bi-fold doors that open out to the deck with bush setting views
- *Modern kitchen with gas cooktop, electric oven, dishwasher and plenty of storage and bench space
- *Spacious open plan living with lots of natural light and tranquil bush views
- *Ducted reverse cycle aircon and fans
- *Gas hot water
- *Family seating overlooks the tranquil freshwater dam.
- *Under house has heaps of room for storage/ art studio etc.
- *Good size shed/ man cave which could also be a teenager's retreat.
- *Double carport / water tanks
- *Bike track with a viewing platform
- *Large level house pad with potential for granny flat/ large shed
- *Enclosed paddock great for goats or horses
- *NBN Wireless and Foxtel connections
- *Bio Cycle wastewater treatment system serviced by Taylex
- *4.16 ha corner block with 2 Street frontages / entrances
- * Fully fenced with a summer creek at the rear of the property.

Disclaimer:

Our best endeavours to ensure the information contained herein is true and correct but accept no responsibility in respect of any errors omissions inaccuracies or mis-statements that occur. Prospective purchasers should make their own enquires to verify the information contained herein.

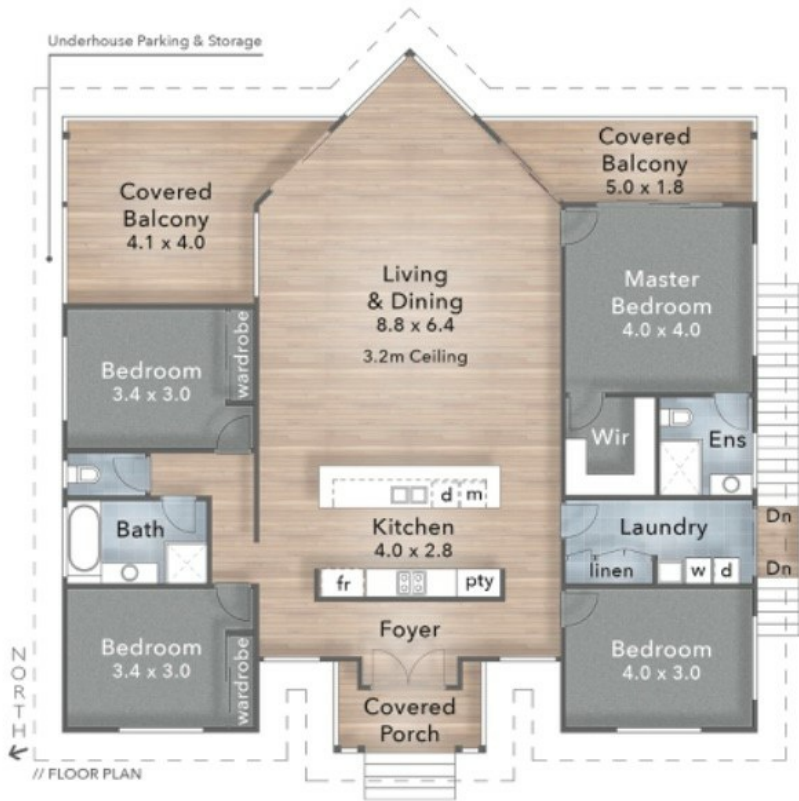
4 BED | 2 BATH | 6 CAR

PRICE:
\$970,000

OPEN FOR INSPECTION:
N/A



Diana Cresswell
0414967708
dianacresswell@atrealty.com.au
www.atrealty.com.au



LEGEND

- 1. Residence | 2. Leveled Pad
- 3. Water Tanks | 4. Dam
- 5. Driveway Access to Coomera Valley Dr
- 6. Double Bay Workshed w/ Annexe (9.0 x 6.0)
- 7. Double Carport (6.0 x 5.5)
- 8. Parking Court



Disclaimer: Please note this floor plan is for marketing purposes and is to be used as a guide only. All dimensions are estimates only and may not be exact measurements.