

SOLD

REACH A NEW LEVEL OF REFINEMENT

Owner says Sell!

In the Docklands precinct's best-named address, 'DOCK 5', this stunning penthouse makes the utmost of a top level position throughout fresh, first class spaces surrounded by dynamic outdoor terrace dimensions.

Designed by multi award winning architect John Wardle, and predominantly owner occupied, Dock 5 has cemented its place as the go to apartment.

Unforgettable views accompany vibrant spaces where luxury has no limit and refinement reaches new levels, including living and dining areas accompanied by a brilliant kitchen and memorable terrace aspects while two seductive bedrooms share a sumptuous bathroom. Residents' 25m indoor pool, impressively equipped gym, relaxation garden, space for car washing, bike racks, storage cage and undercover parking reflect the quality of a building acknowledged for setting a brilliant benchmark in a location that puts the entire CBD merely moments away – reached while you walk past the water. Enjoy!

- Huge two Level 8 penthouse bedroom apartment with two balconies
- Open plan living with meals area.
- Reverse cycle ducted heating and cooling.
- Security entrance, Intercom system.
- Floor to Ceiling windows.
- Built in Wardrobes
- Modern kitchen with stone tops, dishwasher and stainless steel appliances.
- European laundry complete with Washing Machine
- Communal BBQ area.
- Large balcony with Victoria Harbour views.
- Stroll to Etihad Stadium, restaurants and cafes.
- Undercover car park.
- Swimming pool, gym.

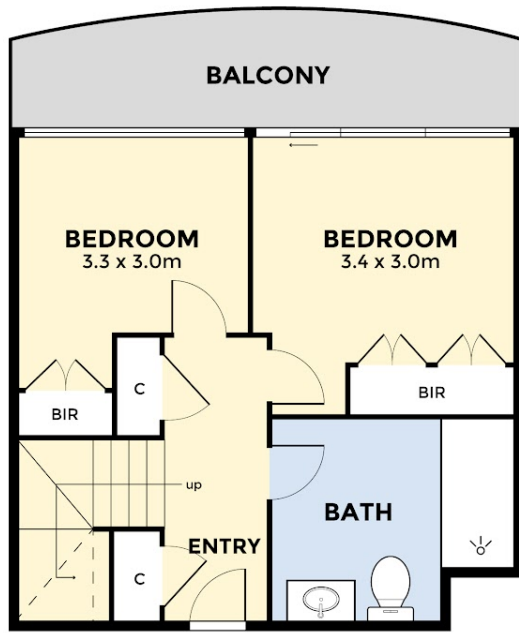
2 BED | 1 BATH | 1 CAR

PRICE:
\$590,000

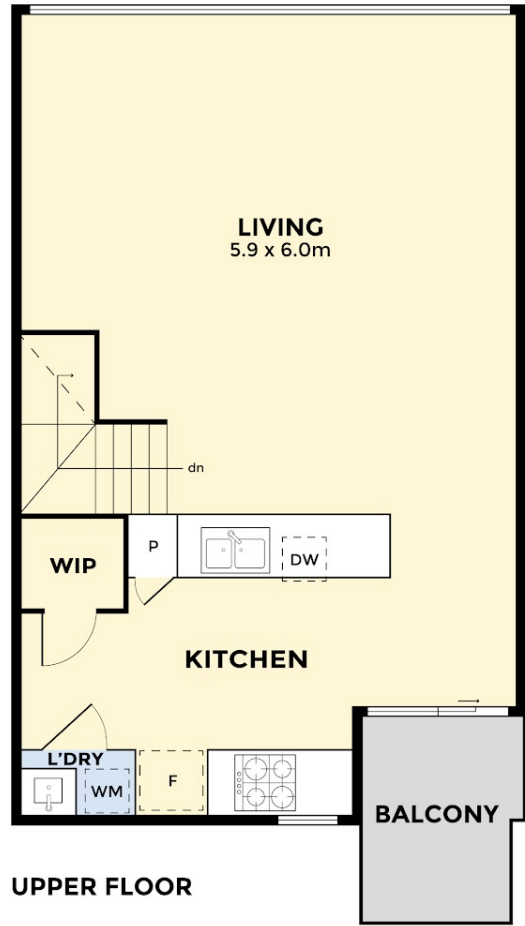
OPEN FOR INSPECTION:
N/A



Michael Lillywhite
0423548994
michael@atrealty.com.au
lillywhiteproperty.com.au



LOWER FLOOR



UPPER FLOOR

Disclaimer: Please note this floor plan is for marketing purposes and is to be used as a guide only. All dimensions are estimates only and may not be exact measurements.