



**SOLD**

## FAMILY HOME ON 1012M2 BLOCK BACKING RAINFOREST

Central to everything the Mountain has to offer, this solid brick and tile family home is a hidden gem, tucked away in a very quiet cul de sac. Unassuming from the front, this home has a room for every occasion and the easy flow of the design gives a feeling of comfort and style.

The heart of the home is the spacious kitchen, dining, living area with extra high ceilings, this is a great space for those who love to entertain or just sit and relax whilst looking out over your very private, fully fenced backyard whilst taking in the natural surrounds that Tamborine Mountain has to offer.

### INSIDE

- Tiled entrance
- Open plan living/kitchen/dining area
- Separate living with timber plank flooring
- 3 bedrooms with built ins
- 4th bedroom/study (no wardrobe)
- Main bedroom with walk in robe and built ins.
- All bedrooms with carpet
- Main bathroom/ separate toilet
- Large ensuite with bidet
- Large central kitchen with walk in pantry
- Gas cooktop
- Stainless steel oven and rangehood
- Dishwasher
- Large fridge space, plumbed for ice cube dispenser
- Security screens
- Plenty of storage
- Fans throughout
- Double lock up garage with side shelving
- Alarm system

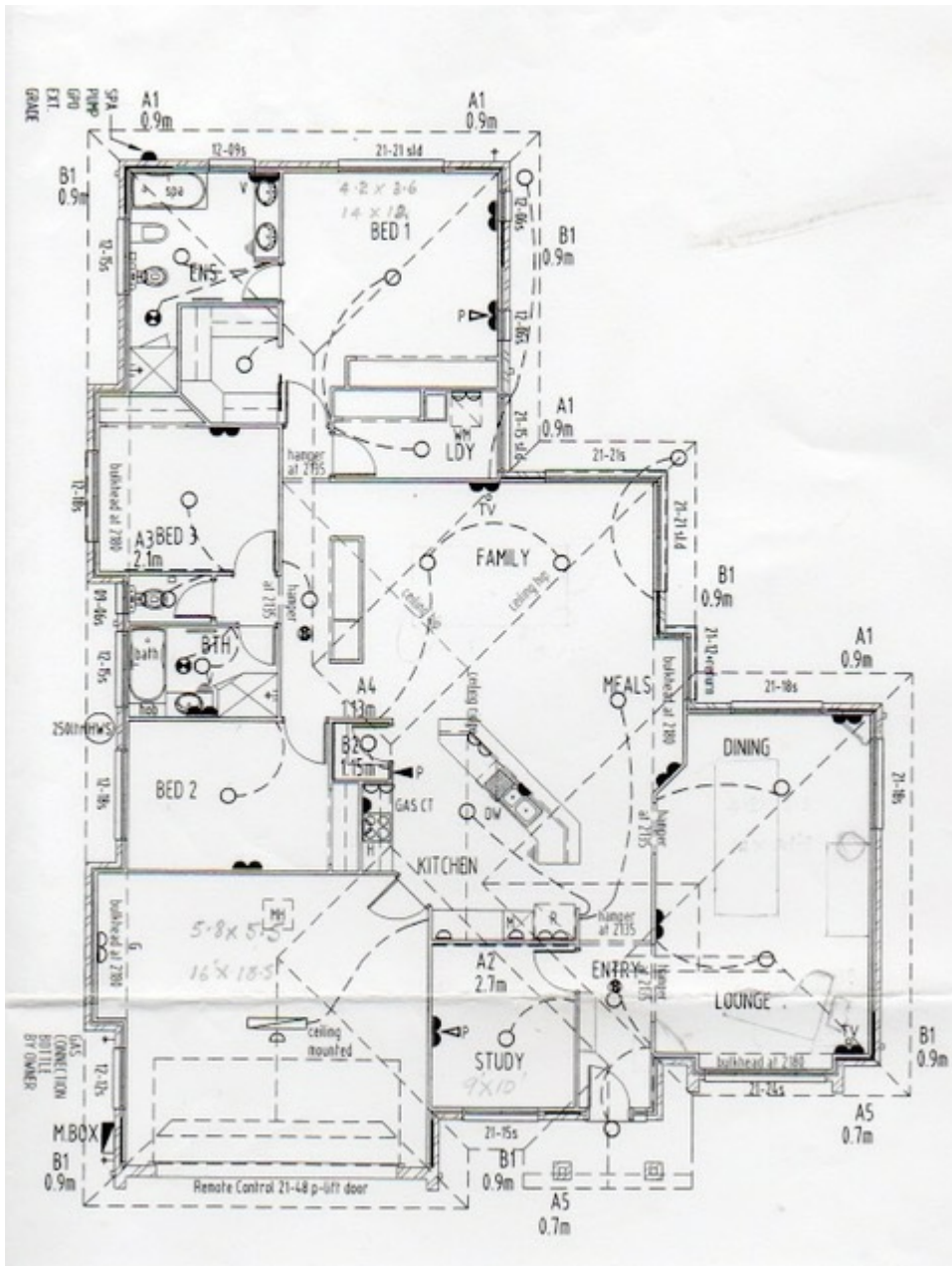
4 BED | 2 BATH | 2 CAR

PRICE:  
\$681,000

OPEN FOR INSPECTION:  
N/A



**Karin Smith**  
**0403012639**  
karin.smith@atrealty.com.au  
[www.atrealty.com.au](http://www.atrealty.com.au)



Disclaimer: Please note this floor plan is for marketing purposes and is to be used as a guide only. All dimensions are estimates only and may not be exact measurements.