

29 CARRUTHERS STREET, MINTO, NSW, 2566



**SOLD**

## THE FAMILY HOME YOU HAVE BEEN WAITING FOR

This stunningly designed family home was built by Wisdom Homes and it is the first time it is being offered to the market. It's vibrant, sleek interiors carry you effortlessly through the expansive double story floor plan that has cleverly been designed with comfort and practicality in mind accompanied with quality fixtures that can be adorned at every turn.

### Features Include:

- Boasting four generously proportioned bedrooms with built in robes
- Master suite includes a walk in robe, spacious ensuite and private access to the balcony
- Formal living room includes a gas fireplace & built in cabinetry with a TV nook
- Family room includes a built in TV unit
- 3rd living space upstairs
- Formal dining
- Well appointed kitchen with ample cupboard & bench space
- Gas cooking
- Stainless steel appliances
- Dishwasher
- Walk in pantry
- Built in wine rack
- Breakfast bar overlooking the dining & family rooms
- 3 Bright & airy full bathrooms in total with frameless shower screens & bathtubs to 2
- Spacious laundry with built in cupboards
- Zoned ducted air conditioning
- New timber flooring throughout
- Expansive undercover entertaining alfresco
- Low maintenance backyard
- Garden Shed
- Single garage with remote & internal access
- Side access
- 361sqm block

This exquisite home is located in the popular and family friendly suburb of Minto and only a short distance from Minto Marketplace where you will find bustling restaurants and cafes, Local

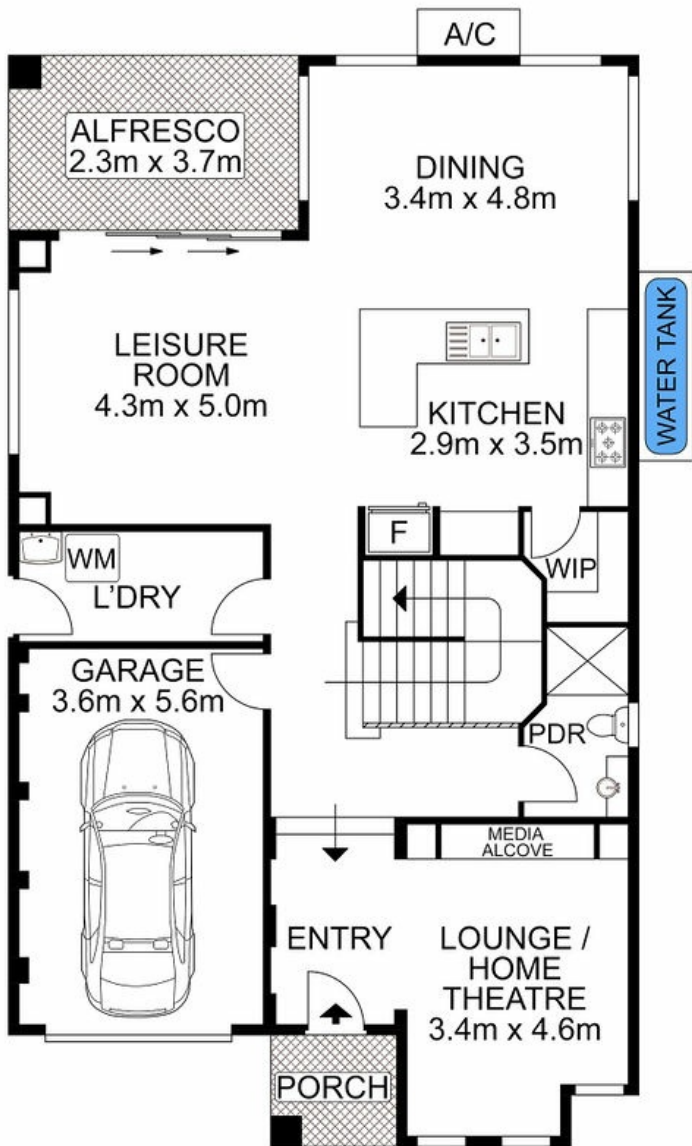
4 BED | 3 BATH | 1 CAR

PRICE:  
\$863,000

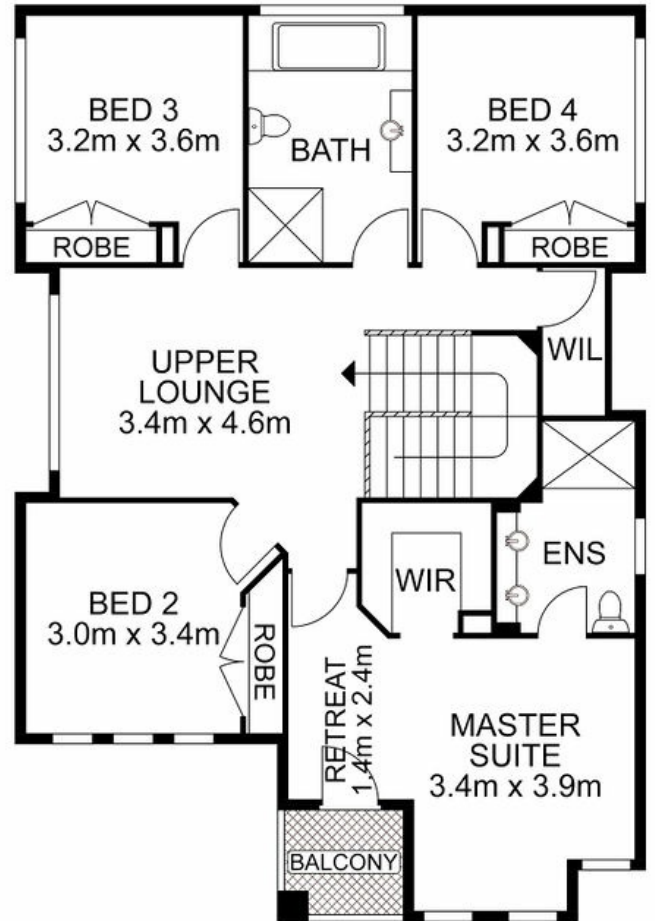
OPEN FOR INSPECTION:  
N/A



**Huss Al Salemi**  
**0411699419**  
huss@atrealty.com.au  
[www.agencycentral.com.au](http://www.agencycentral.com.au)



ENTRY LEVEL



UPPER LEVEL



Disclaimer: Please note this floor plan is for marketing purposes and is to be used as a guide only. All dimensions are estimates only and may not be exact measurements.

29 Carruthers Street, Minto

Huss Al Salemi • All measurements are approximate • Drawn for marketing purposes only  
 0411699419  
 huss@atrealty.com.au  
 www.agencycentral.com.au

