



## FOR SALE

### QUALITY BIG FAMILY HOME IN PERFECT LOCATION. (SOLD)

Too late this property is SOLD!

This large exclusive 5 Bedroom 4 bathroom family home offers luxury, location, space and privacy.

Situated only mts from the renowned Gympie Terrace with its waters edge, restaurants and activity's meaning you and the family will enjoy the inside of your new home just as much as you enjoy the outside.

Less than 8 years ago Janet Street and its prestigious houses and surroundings was graced with the presence of this great property raising the standards to an even higher level.

The largest of families will love living here and you can even invite friends along to visit and stay without fear of feeling closed in.

This great home offers so much more than just being a house as you will definitely feel that feeling as soon as you enter the double front doors into the wide foyer.

Privacy for your family is always important and this one is partially hidden from the main road behind the natural fauna this street offers.

Some Features:

5 Large bedrooms.

3 Bedrooms with Bathrooms.

4 Bathrooms in total.

Master Bedroom with huge walk-in Robe with Balcony

Open Plan Kitchen Dining Lounge.

Kitchen has massive walk-in pantry.

Large Media room/ Library.

Large Study.

Second Lounge Upstairs.

Ducted A/C.

Solar Power and Hot Water.

Swimming Pool.

Fully Fenced and Private.

Double Garage with Remote.

Plantation Shutters and Screens.

645 m2 Block

5 BED | 4 BATH | 2 CAR

PRICE:

PRICE GUIDE \$3m

OPEN FOR INSPECTION:

N/A

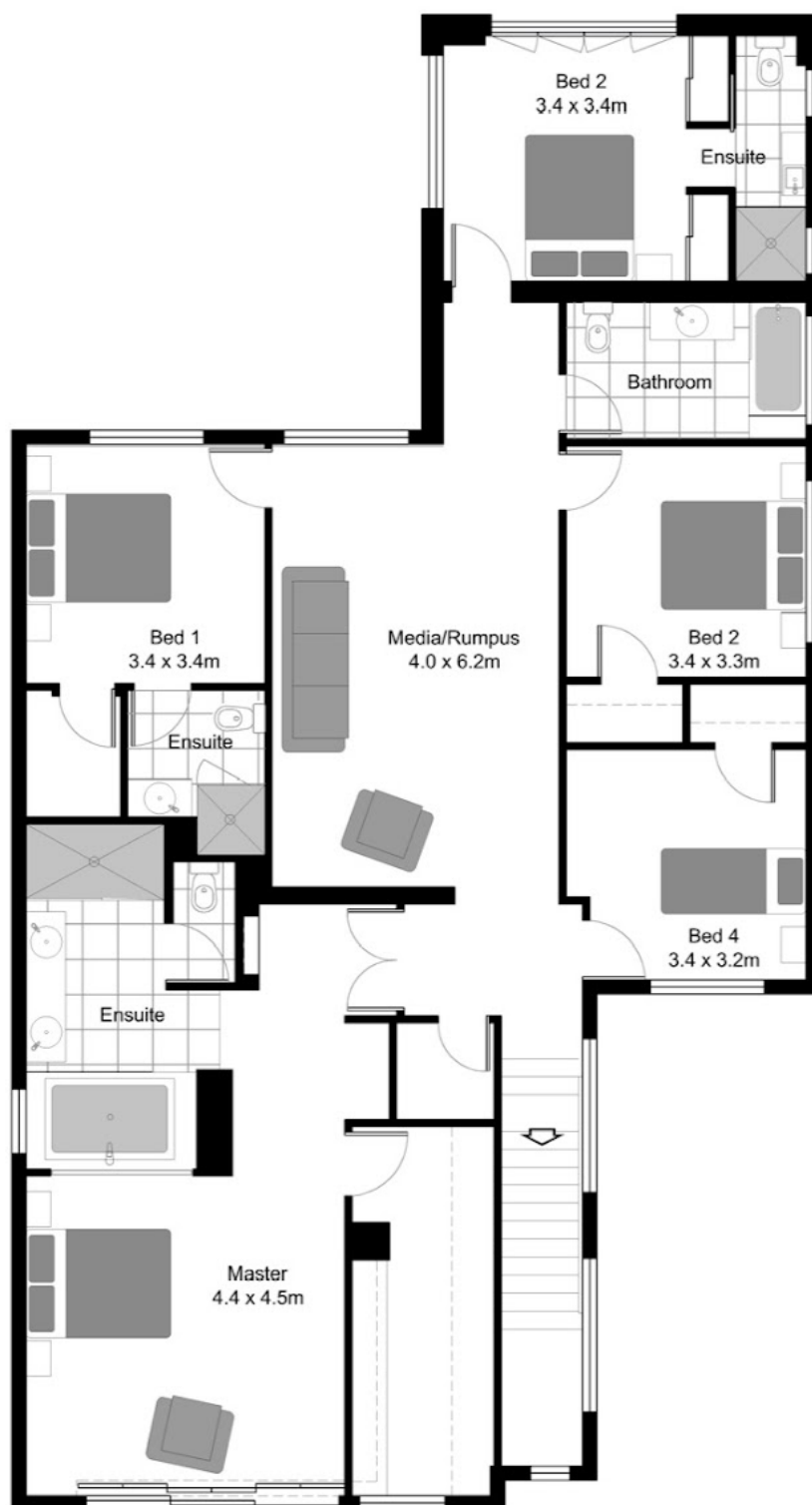


**John Owen**

**0409733555**

johnowen@atrealty.com.au

[www.atrealty.com.au](http://www.atrealty.com.au)



UPPER FLOOR

Disclaimer: Please note this floor plan is for marketing purposes and is to be used as a guide only. All dimensions are estimates only and may not be exact measurements.

This floor plan including furniture, fixture measurements are approximate and for illustrative purposes only. All enquiries must be directed to the agent, vendor or party representing this property. We give no guarantee, warranty or representation as to the accuracy and completeness of the floor plan.

**TOTAL AREA 354.0m<sup>2</sup>**