



SOLD

NOTHING TO DO... NOTHING TO SPEND!!

The complex of Midway Mews has a Low-cost body corporate, which makes this a great investment and #19 should rent for \$340.00 - \$355 per week

This 2 bedrooms beautifully renovated unit in an ideal location, ground-level, and ideally suited to first home buyers, down-sizers, or astute investors. Situated in a highly convenient Waterford West location, this two-bedroom home will not last long on the market - the owners are extremely motivated, and it is definitely priced to sell

Features include

- 2 Good sized Bedrooms
- Brand new Bathroom
- Brand new Flooring throughout
- Separate toilet new
- Open Plan Living
- Lock Up Car Accommodation
- Private, secure courtyard at the back
- Private courtyard at the front
- Brick Low set construction
- 267m2 block

Location: Could not be better with:

- 50m to Bus stop
- 1 min walk to Aldi Shops
- 2 mins walk to Marsden Park Shopping Centre
- 2 mins walk to the library and medical centres
- Approx 10 mins to Griffith University
- Approx 10mins to Logan Hospital
- Approx 30 mins to Brisbane and the Goldcoast

Inspection is a must, and this unit will not last long!

Open home times are given, and Covid-19 requirements are a must to enter the unit.

Call Roz Abrahams today 0413 07 07 07

2 BED | 1 BATH | 1 CAR

PRICE:
\$230,000

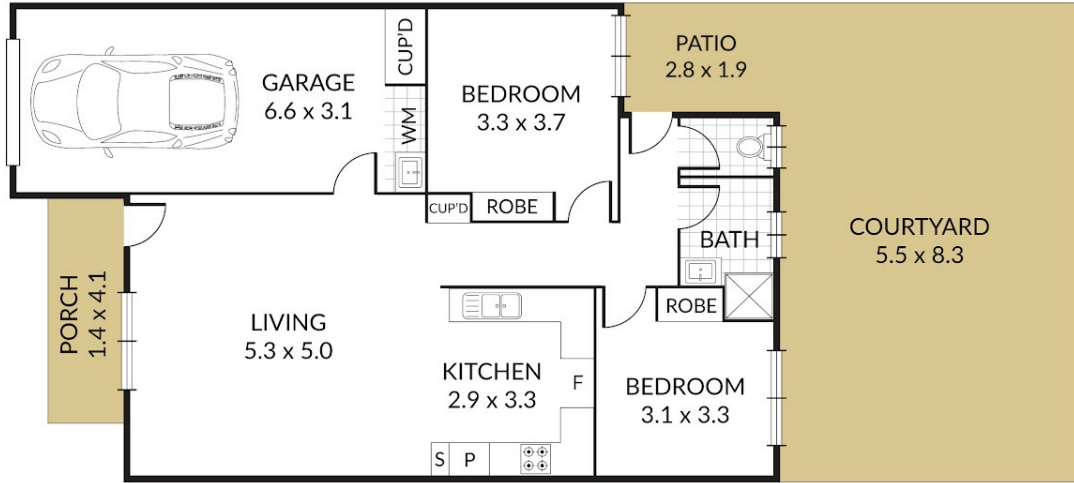
OPEN FOR INSPECTION:
N/A



Roz Abrahams
0413070707
roz@atrealty.com.au
www.atrealty.com.au



2 x 1 x 1 x



NOTE: Every precaution has been taken to verify the accuracy of the above details. However, prospective purchasers are advised to make their own enquiries.

Disclaimer: Please note this floor plan is for marketing purposes and is to be used as a guide only. All dimensions are estimates only and may not be exact measurements.