



## FOR SALE

DEVELOPMENT OPPORTUNITY IN THE HEART OF SOUTHPORT. EXPRESSIONS OF INTEREST CLOSING 30/4/2021 CONTACT JANINE REDWOOD - 0419534436

3 bedroom house for sale on large, elevated, north facing block within the Southport PDA (Priority Development Area) scheme. Don't miss this exciting opportunity to secure a large 1,057m<sup>2</sup> block with the original three-bedroom house intact in the highly sought after and tightly held Southport CBD precinct close to Ferry Road Markets, TSS preschool park, St Hilda's school, Southport Park shopping centre, light rail, Broadwater Parklands and much more. Endless opportunities including to develop townhouses/villas - subject to council approval in this central location.

- 1,057m<sup>2</sup> block
- 3 bedroom house
- Zoning - Medium Density Residential
- Quiet residential street
- Minutes to Southport CBD
- Walking distance to Tram Station and transport options providing direct access to Griffith University and Hospital Precinct
- Walking distance to St Hilda's and TSS private schools and Southport Private Hospital
- Walk to local shops including the Brickworks Marketplace, China Town, trendy Southport eateries and rooftop bars and Australia Fair shopping centre

Contact Janine Redwood - 0419534436

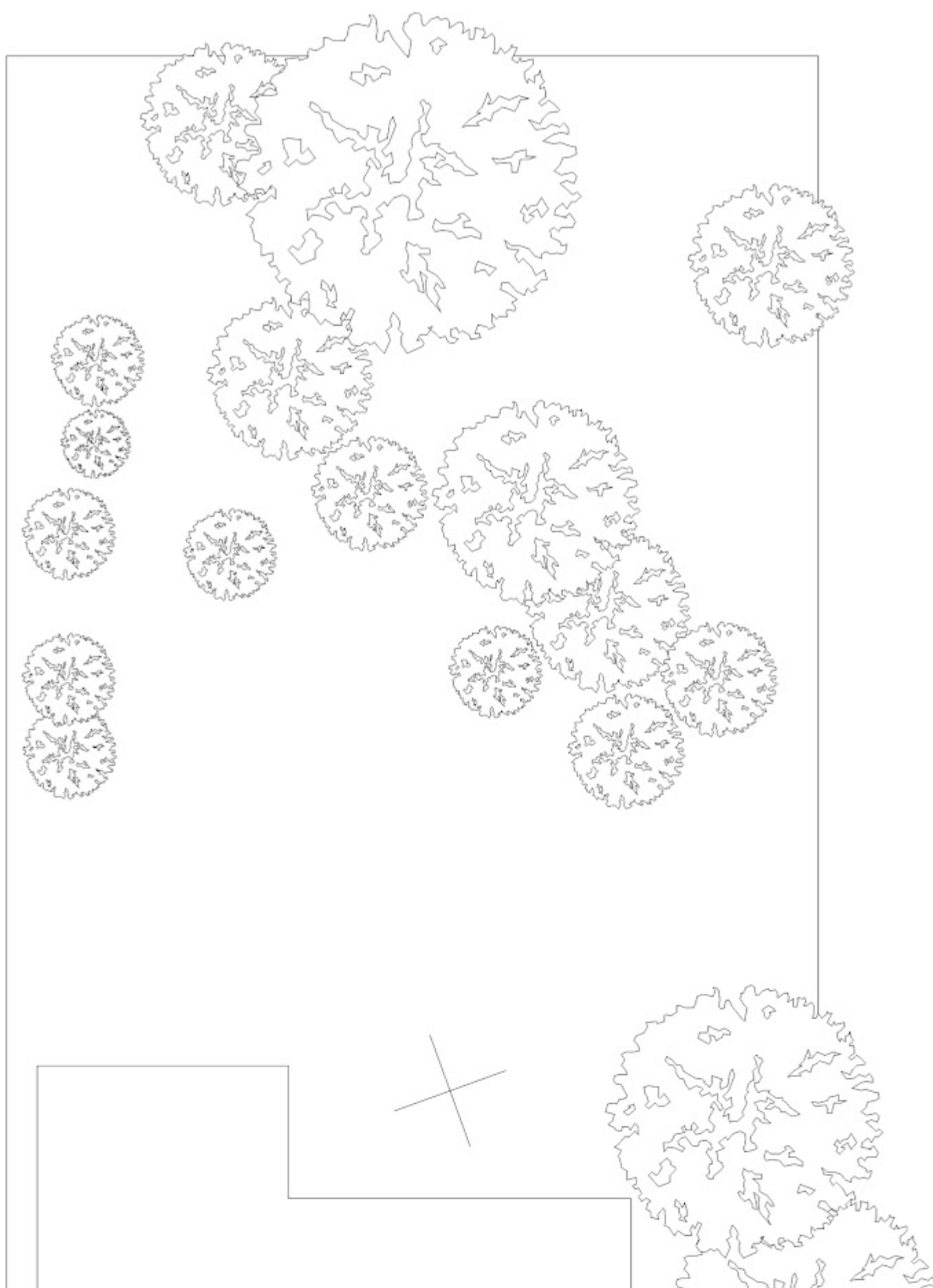
3 BED | 1 BATH | 1 CAR

PRICE:  
EXPRESSIONS OF INTEREST

OPEN FOR INSPECTION:  
N/A



**Janine Redwood**  
**0419534436**  
janine@atrealty.com.au  
[www.atrealty.com.au](http://www.atrealty.com.au)



Disclaimer: Please note this floor plan is for marketing purposes and is to be used as a guide only. All dimensions are estimates only and may not be exact measurements.

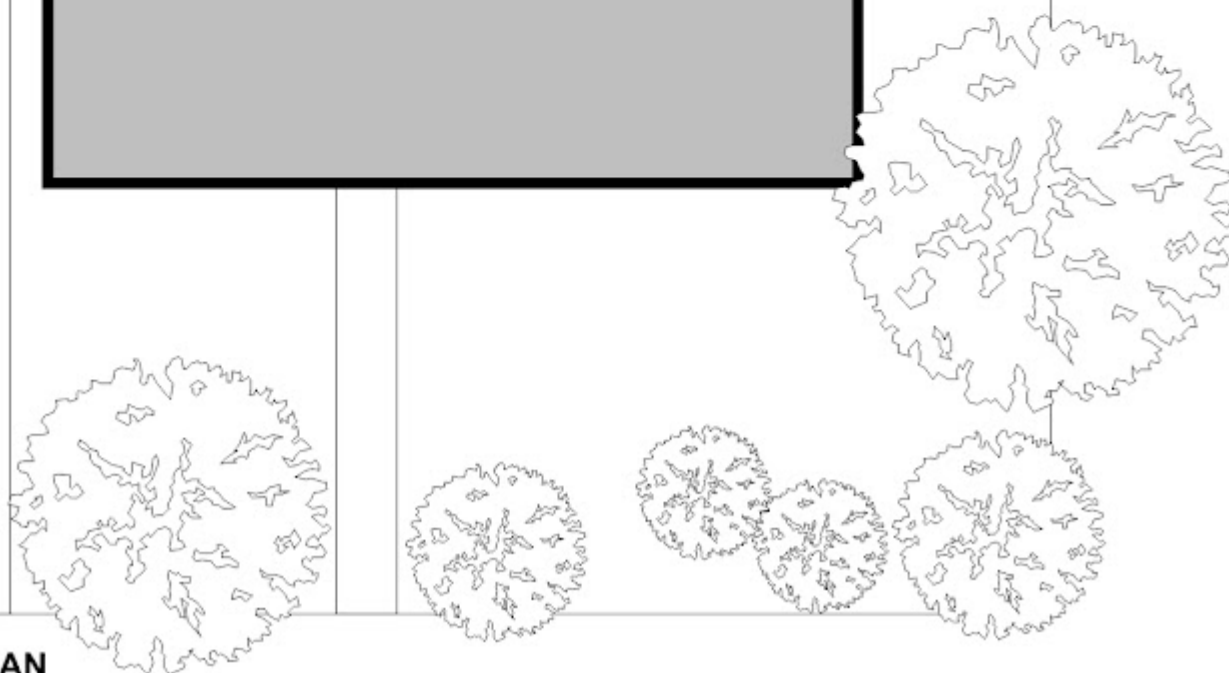
**Janine Redwood**  
**0419534436**

janine@atrealty.com.au  
[www.atrealty.com.au](http://www.atrealty.com.au)

**@realty**

**RESIDENCE**

**DRIVEWAY**



**SITE PLAN**