



SOLD

SENSATIONAL VIEWS! 1ST HOME, DOWNSIZER, RETIREMENT OR SEA CHANGE!

Enjoy peaceful family living in this heavily updated, water fronted, 3 bedroom home on picturesque Hindmarsh Island. This home features an open planned kitchen with dishwasher, pantry, breakfast bar, plenty of bench and cupboard space leading through to the generous sized family room and dedicated dining room. A reverse cycle, split system, air conditioner ensures your year round comfort.

The stunning water views from the kitchen, dining and family room with outside access to the large pergola help to bring the outdoors inside and provide the perfect home to entertain family or friends, enjoy as a holiday home, rent out as an Air BnB or retire too without the stress of an extensive gardens to maintain.

The master bedroom includes a walk in robe and ensuite, while the other 2 bedrooms are large enough to take a queen size bed, perfect for teenagers or house guests! A low maintenance front yard with remote operated double garage provides plenty of room for the car(s) and / or any water toys you might like securely stored.

This family sized home has been heavily updated and is move in ready. Some of the updates within the last year include: Carpet replaced to all bedrooms, lighting upgraded to LED throughout, all taps replaced, a new cooktop, new irrigation system with timer and complete repainting inside and out.

This home of 164m²+ of living space set on a 670m² block provides plenty of space for children and / or pets to enjoy or if you prefer water sports or fishing you could tie up your own boat, jet ski or tinny at the private pontoon. An abundance of waterbirds, together with the lapping of the waves provide a tranquil, peaceful ambiance. Don't delay – this lifestyle opportunity won't last!

RLA 269823

3 BED | 2 BATH | 2 CAR

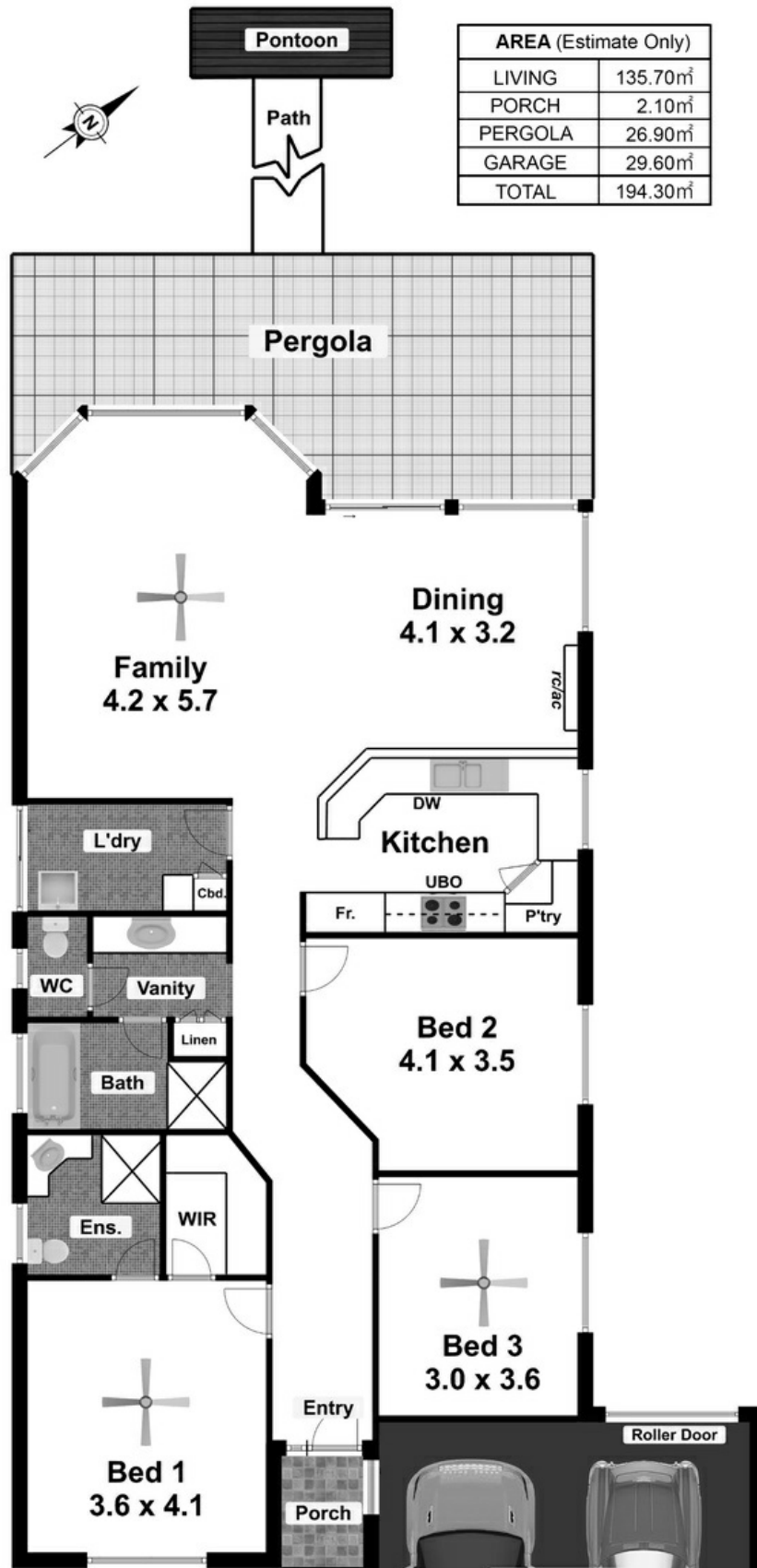
PRICE:
\$430,000

OPEN FOR INSPECTION:
N/A



Mark Davies
0403160447
markdavies@atrealty.com.au
www.atrealty.com.au
RLA: 269823

141 Excelsior Parade HINDMARSH ISLAND



Disclaimer: Please note this floor plan is for marketing purposes and is to be used as a guide only. All dimensions are estimates only and may not be exact measurements.

This drawing is for illustration purposes only.
All measurements are approximate only and information
intended to be relied upon should be independently verified.
Floorplan produced by Open2view.com

