

2/14 WATT STREET, SPRINGVALE, VIC, 3171



SOLD

SOLD \$685,000 BY VIET HA 0406 246 384

Premier Townhouse in a great location @

If you are looking at owning in Springvale, attention first home buyers, down-sizers and investors, there is simply no other place more convenient, central, edgy and luxury Townhouse, you will find all three generously sized bedrooms, which feature built, large living room, sizeable kitchen and meals area, central & well-maintained bathroom, tiled throughout, lovely paved outdoor space.

Only One Year Old, this is a fantastic opportunity to grow your family or upgrade your standard of living. With a focus on a high standard, natural light and quality features and fittings. Low maintenance living and intelligent with landscaping and plants. Move in or rent out as is with no improvements necessary, Prime location close to a variety of amenities.

Property features include:

- Timber floorboards
- Ground floor 2.7m high ceiling
- Chic designer floor to ceiling tiled bathrooms
- 2 bedrooms, 2.5 bathroom, 3 toilets, 1 living, 1 Garage
- Good sized balcony.
- Low-maintenance yard, veggie patch, off-street parking
- Hydronic heating, reverse cycle AC (LG INVERTER 10 years Warranty) to living, gas oven and cooktop, pendant lighting, carpet/tiles
- Modern kitchen with Caesar stone bench tops and s/steel 600mm ovens and gas stoves, range hoods and dishwashers (VENETO brand)
- Rental return \$1.825/ monthly
- and so much more!

Premier location and is within minutes from Springvale Shopping Centre, Homemaker Hubs including IKEA, Harvey Norman and Bunnings, Supermarkets, Monash University, Minaret College, St John Vianney's Primary, Westall Secondary, Wellington Secondary, Monash Uni, trains, buses, and major road arterials, parklands and bus and train services.

- To arrange, please contact Viet Ha 0406 246 384 / email: viet@atrealty.com.au .7 days /week

2 BED | 2 BATH | 1 CAR

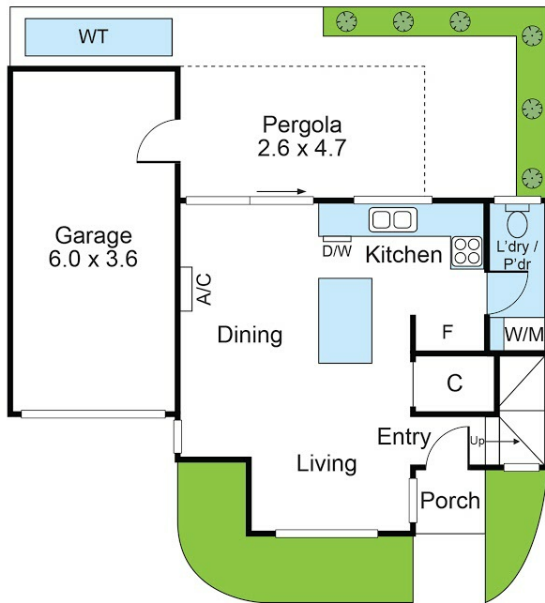
**PRICE:
\$685,000**

**OPEN FOR INSPECTION:
N/A**

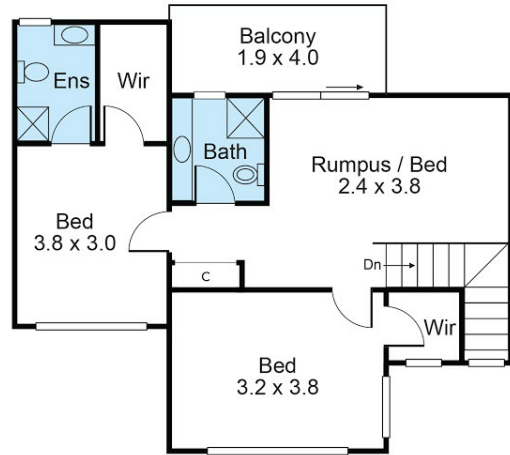


Viet Ha
0406246384
viet@vietha.com.au
vietha.com.au

2/14 Watt Street, Springvale



Ground Floor



First Floor



Disclaimer: This floorplan is for illustration purposes only and no warranty is given to its accuracy. Purchasers are advised to carry out their investigations.

Disclaimer: Please note this floor plan is for marketing purposes and is to be used as a guide only. All dimensions are estimates only and may not be exact measurements.