

SOLD

**COUNTRY ACERAGE WITH CITY CONVIENIENCE
MINUTES TO THE BEACH!!**

Nestled out of sight in a super quiet, premium cul - de - sac position is the find of 2021!

- 3 bedrooms (b-ins)
- 2 bathrooms
- Extra-large family room
- New solar energy system
- 2 x split system a/c
- Double Garage with internal access
- Massive 8 bay horse shed
- established horse yards
- established gardens
- almost completely private
- spa and above ground pool

Put simply, this is possibly the first and last opportunity you may be presented with to claim your own "slice of heaven" boasting 2 + useable acres of private paradise ready - set - go for the horse enthusiast , gardening guru or a multitude of options and uses limited only by your needs, wants and desires.

Walk 100m to the end of the cull de sac to the primary school , 150m to the legendary " Pauls Corner " service centre with café, IGA etc all at your fingertips and the well serviced bus stops to the bay and Newcastle high school options.

You will soon note the neighbours are friendly and family orientated in this boutique acreage estate where on any given weekend the younger locals may be seen "on show" with their trusty ponies , perhaps en-route to the local pony club a mere 600 m away or just having fun together, it's almost a step back in time, yes safe ,secure and quite.

Salt Ash is smack bang halfway between the Blue water wonderland of Nelson Bay and booming Newcastle .

Only 5 - 10 minutes to the lavis lane entry of 4 x 4 heaven Stockton Beach, the world famous

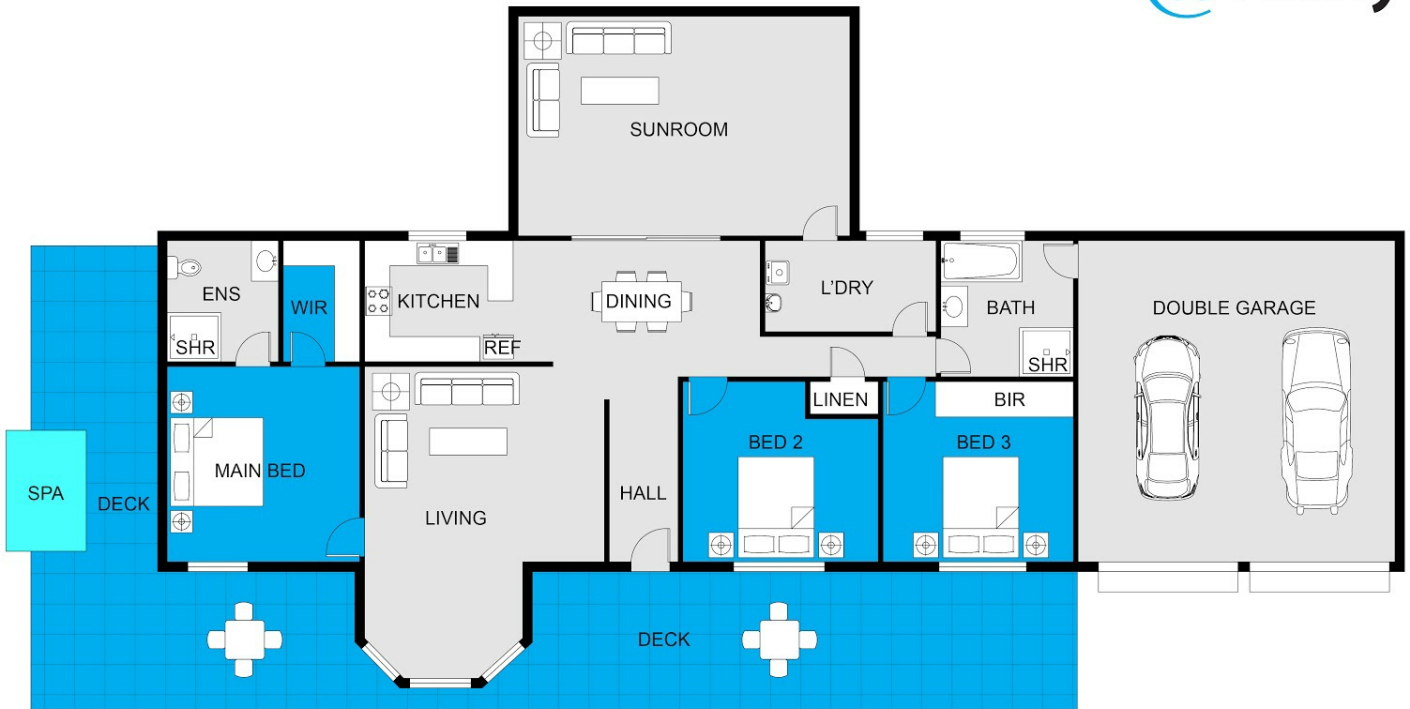
3 BED | 2 BATH | 2 CAR

PRICE:
\$755,000

OPEN FOR INSPECTION:
N/A



Tony Hoare
0432144148
tonyhoare@atrealty.com.au
www.atrealty.com.au



FLOOR PLAN

This floor plan including furniture, fixture measurements and dimensions are approximate and for illustrative purposes only. BoxBrownie.com gives no guarantee, warranty or representation as to the accuracy and layout. All enquiries must be directed to the agent, vendor or party representing this floor plan.

25 David Drive

Disclaimer: Please note this floor plan is for marketing purposes and is to be used as a guide only. All dimensions are estimates only and may not be exact measurements.