

# SOLD

## SOLD BY HELANA KUHL

Very rarely do you have the opportunity to secure a low set townhouse within the very popular 'Jindalee Close'.

This immaculately presented home is positioned perfectly and certainly stands out from any previous sales within the complex. Boasting a very large floorplan, abundant yard space, three generous bedrooms and two well appointed bathrooms, this home should not be missed.

If you are looking for lifestyle with the luxury of living in a secure and beautifully landscaped complex surrounded by greenery, then look no further. Everything you could ask for has been provided in this perfectly presented home. Enjoy the serenity, tucked away in a peaceful location.

Your spacious new home boasts open plan living with the indoors flowing seamlessly outside into your own private courtyard, making entertaining a breeze. Enjoy a quiet morning coffee or afternoon beverage, overlooking your landscaped garden or invite friends and family to lay by the pool while you cook the BBQ. It's a perfect way to spend your weekend.

This immaculate home has many extras and is ideal for investors, families and couples with an inspection a must for those looking for the perfect place to call home.

Features Include:

- \* Solar Power
- \* Secure parking
- \* 2 well appointed Bathrooms
- \* Undercover BBQ area
- \* Resort style pool
- \* Garage with remote door
- \* Air conditioning and security screens
- \* 3 Generous bedrooms with built-ins
- \* Private fully fenced yard
- \* Spacious courtyard with large raised garden
- \* Car parks provided for your guests
- \* Garden Shed

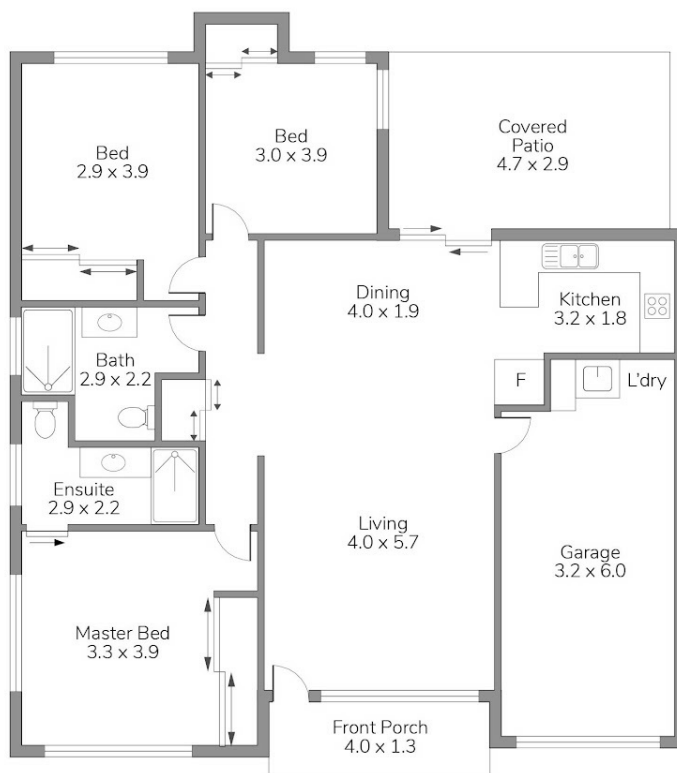
3 BED | 2 BATH | 1 CAR

PRICE:  
\$486,000

OPEN FOR INSPECTION:  
N/A



**Helana Kuhl**  
0447522643  
helana@atrealty.com.au  
[www.atrealty.com.au](http://www.atrealty.com.au)



40/25 Hogan Place   
 Seventeen Mile Rocks

Approximate total  
 Internal 138m<sup>2</sup> | External 18m<sup>2</sup> | Total 156m<sup>2</sup>

MOUNTFORT

Please note this floor plan is for marketing purposes only. Dimensions and layout are approximate. Mountfort Media gives no guarantee or warranty over the accuracy of this plan, interested parties should make their own enquiries.



Disclaimer: Please note this floor plan is for marketing purposes and is to be used as a guide only. All dimensions are estimates only and may not be exact measurements.