



**SOLD**

## LARGE FAMILY HOME ON CORNER BLOCK

Bedrooms: 4+  
Bathrooms: 2  
Parking: 2

Impeccable family home in the premier suburban setting of Durack – welcome to 3 Pinanga Court. Freshly painted and well maintained, this ex DHA home has a lot to offer! Positioned within a dead end road with only local traffic passing and on a generous corner allotment, the home has dual carport parking and loads of lawns both front and back to keep the kids and pets amused for hours!

Inside is a free flowing living room with a separate dining room and a family room at the rear. The kitchen includes wrap around counters along with a corner pantry and a servery island bench with sliding doors taking you through to the verandah that overlooks the easy care yards and gardens.

A front facing master bedroom suite and 5th bedroom / home office are light filled and spaciouly designed with the master including a walk in robe and ensuite bathroom. The 3 additional bedrooms are at the rear, all bedrooms include tiled floors and A/C.

This generous property includes a garden shed and side gated entry to the yard along with a fresh coat or paint and is well maintained, vacant and move in ready, this is a great time to buy! Spend your free time exploring the nearby lakes, foot paths that wind throughout the suburb passing the lakes and golf course or venture into the city for Friday night markets throughout the Dry.

### Brochure Points:

Move in ready family home in one of the best suburbs in Palmerston  
Quiet court setting in a dead end street with only local traffic passing  
Dual carport parking at the front of the home with a sheltered porch entry  
Front facing 5th bedroom / home office

Master bedroom is front facing boasting an ensuite bathroom and walk in robe  
Main bathroom includes a bath tub and sep shower with central vanity and sep toilet  
Hallway linen closet for additional storage, internal laundry room with linen closet  
Free flowing living areas with separate dining and family room at the rear  
Dining room adjacent to the kitchen framed in windows with garden views  
Kitchen is family sized and includes a corner pantry along with island prep bench  
Verandah is the perfect space for easy entertaining and outdoor dining

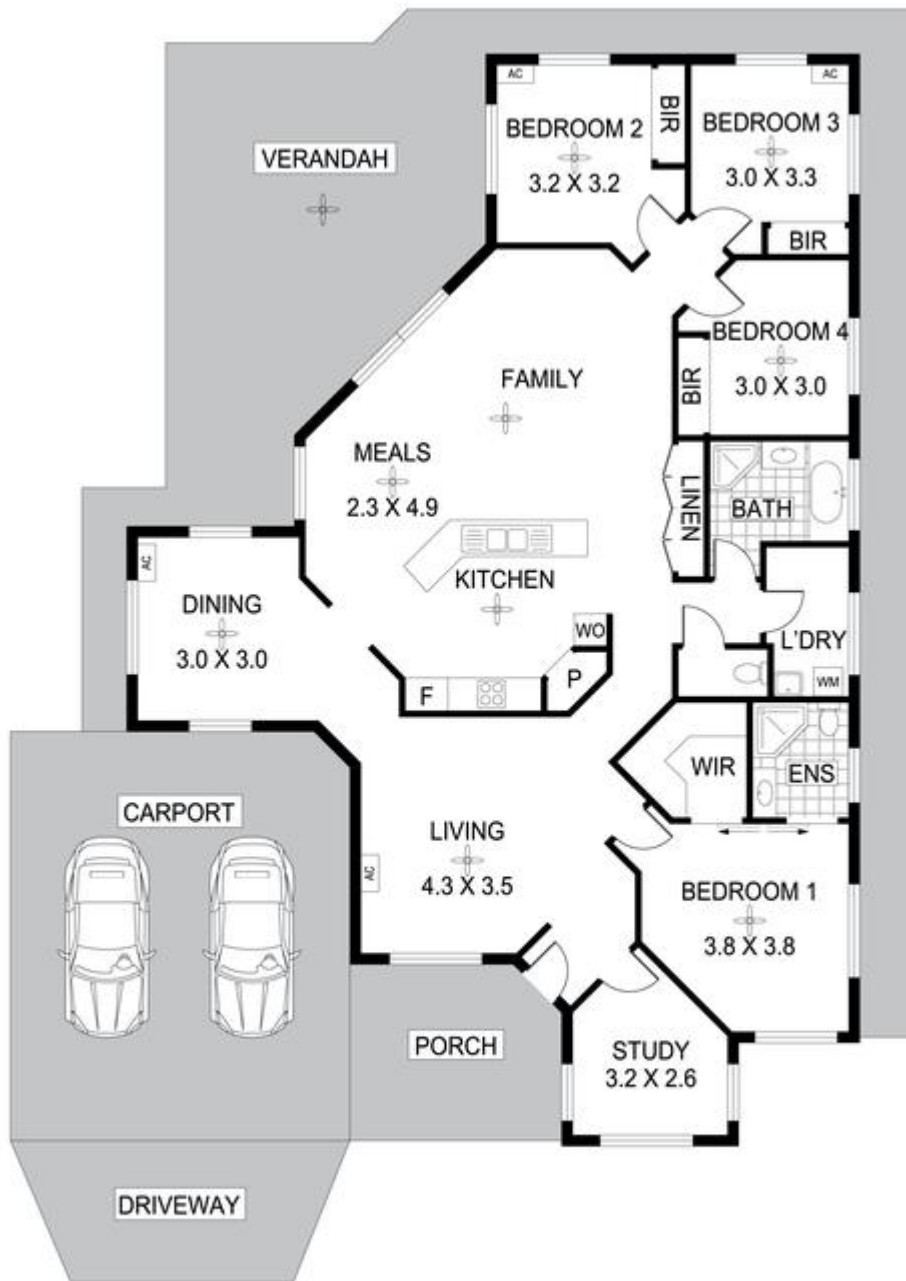
4 BED | 2 BATH | 2 CAR

PRICE:  
\$515,000

OPEN FOR INSPECTION:  
N/A



**John Simpson**  
**0416228270**  
johnsimpson@atrealty.com.au  
[www.atrealty.com.au](http://www.atrealty.com.au)



Scale in metres. Indicative only. Dimensions are approximate. All information contained herein is gathered from sources we believe to be reliable. However we cannot guarantee its accuracy and interested persons should rely on their own enquiries

### 3 Pinanga Court Durack NT 0830

Disclaimer: Please note this floor plan is for marketing purposes and is to be used as a guide only. All dimensions are estimates only and may not be exact measurements.