



FOR SALE

SIMPLY STUNNING CONTEMPORARY FAMILY HOME

Architecturally designed and built to the highest standards, this simply stunning family home is spectacular in design and finish, and every aspect has been carefully considered for a superb living environment.

Situated in a highly sought after area of Streaky Bay, this spacious 4 bedroom home offers functional family living of generous proportions, well thought out open plan living and dining areas coupled with the adjoining outdoor alfresco, facilitating an ideal setting for year-round indoor/outdoor entertaining.

Entering the home through a grand entrance foyer with its high ceilings, the space is light filled and inviting, with neutral and contemporary décor.

The modern entertainer's kitchen with island bench, spacious butler's pantry and quality appliances overlooks the expansive open plan living/dining area, leading out to the impressive undercover alfresco space with an amazing outlook over the township and waters of Streaky Bay

The breathtaking views from this property must be seen to be truly appreciated.

Fitted throughout with the highest level of inclusions, finishes and impeccable attention to detail, this stunning property is the ultimate family home.

Property features include:

- Polished concrete flooring throughout the living areas
- Designer kitchen appliances
- Breakfast bar with outlook over the outdoor alfresco area
- Spacious well set out butler's pantry with bench space and floor to ceiling storage
- Stunning stone feature wall separating living and dining areas with inbuilt wood combustion heater
- Spacious master suite with "walk through" robes and stunning ensuite
- 2 x large children's bedrooms with BIR incorporating internal desk areas
- Large 4th bedroom with BIR

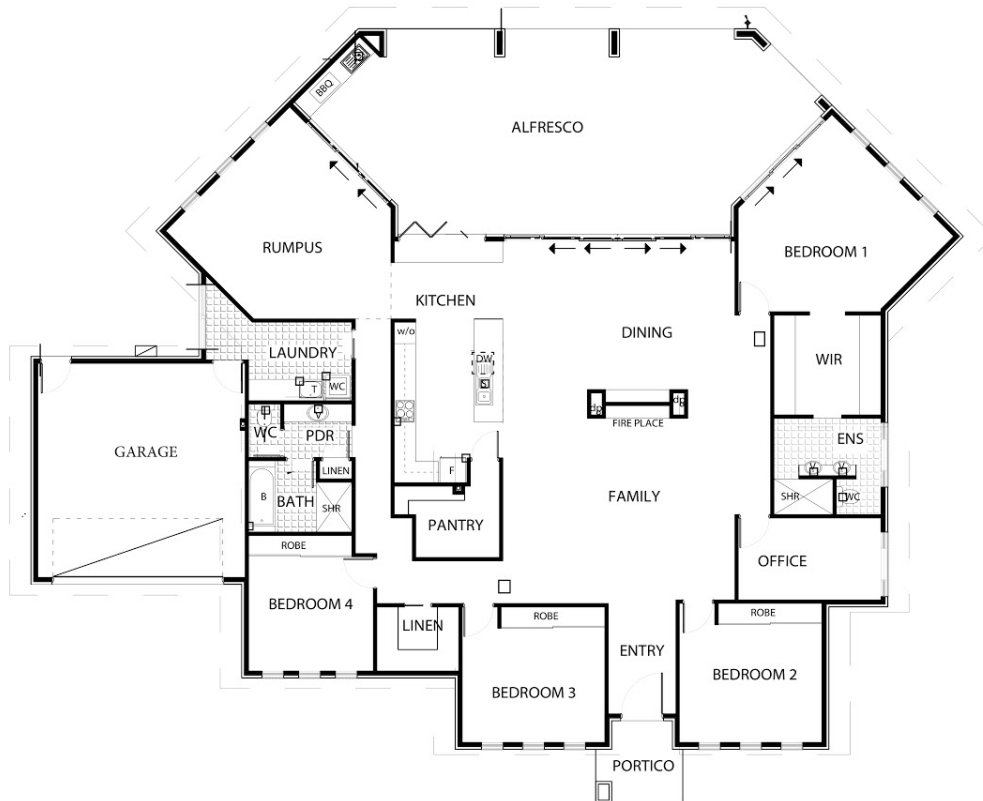
4 BED | 2 BATH | 6 CAR

PRICE:
Contact Agent

OPEN FOR INSPECTION:
N/A



Travis Barber
0421925005
travisbarber@atrealty.com.au
www.atrealty.com.au
RLA: 269823



Disclaimer: Please note this floor plan is for marketing purposes and is to be used as a guide only. All dimensions are estimates only and may not be exact measurements.