

6 MARLOW PLACE, CAMPBELLTOWN, NSW, 2560



SOLD

HIGH & MIGHTY ON FANTASTIC SIZED BLOCK OF LAND

This magnificent family home is full of old-world charm and boasts sweeping district and valley views to the Blue Mountains. It is located on a 763sqm block of land on the high side of a quiet cul-de-sac and showcases a wide range of impressive inclusions. Spread over an expansive floorplan, it is perfect for those looking to buy a family home that has a stunning aspect while encompassing comfort and practicality.

Features Include:

- Front veranda with sweeping district and valley views to the Blue Mountains
- Expansive lounge room with French door access and retractable flyscreen to front veranda
- Four well-proportioned bedrooms with built in mirrored robes to three.
- Main bedroom overlooks district and valley views
- Combustion wood fireplace
- Ducted air conditioning throughout with zoning capability
- Dining room with custom made floor to ceiling bookcase and cabinets
- High 9ft ceilings throughout with decorative corning
- Chandelier lighting
- Well-appointed kitchen featuring a Caesar stone benchtop, downlights, built in wine rack, Smeg appliances and a stunning - Tasmanian Oak/Granite Island Bench
- Dishwasher
- Bright & airy main bathroom has been updated & includes a spa bath tub, heated towel rack and heat lamp
- Second bathroom is combined with the laundry
- Polished timber floorboards throughout
- Gorgeous undercover alfresco with built in BBQ adjoining kitchen via bi-fold doors providing perfect indoor/outdoor living
- Workshop/Bar with extra storage space
- Well maintained in-ground salt water swimming pool with custom fitted pool blanket
- Generously proportioned backyard with plenty of space for the kids to play
- Single lock up garage plus second dedicated parking spot linked to driveway
- Security alarm system
- Established gardens
- Off street parking

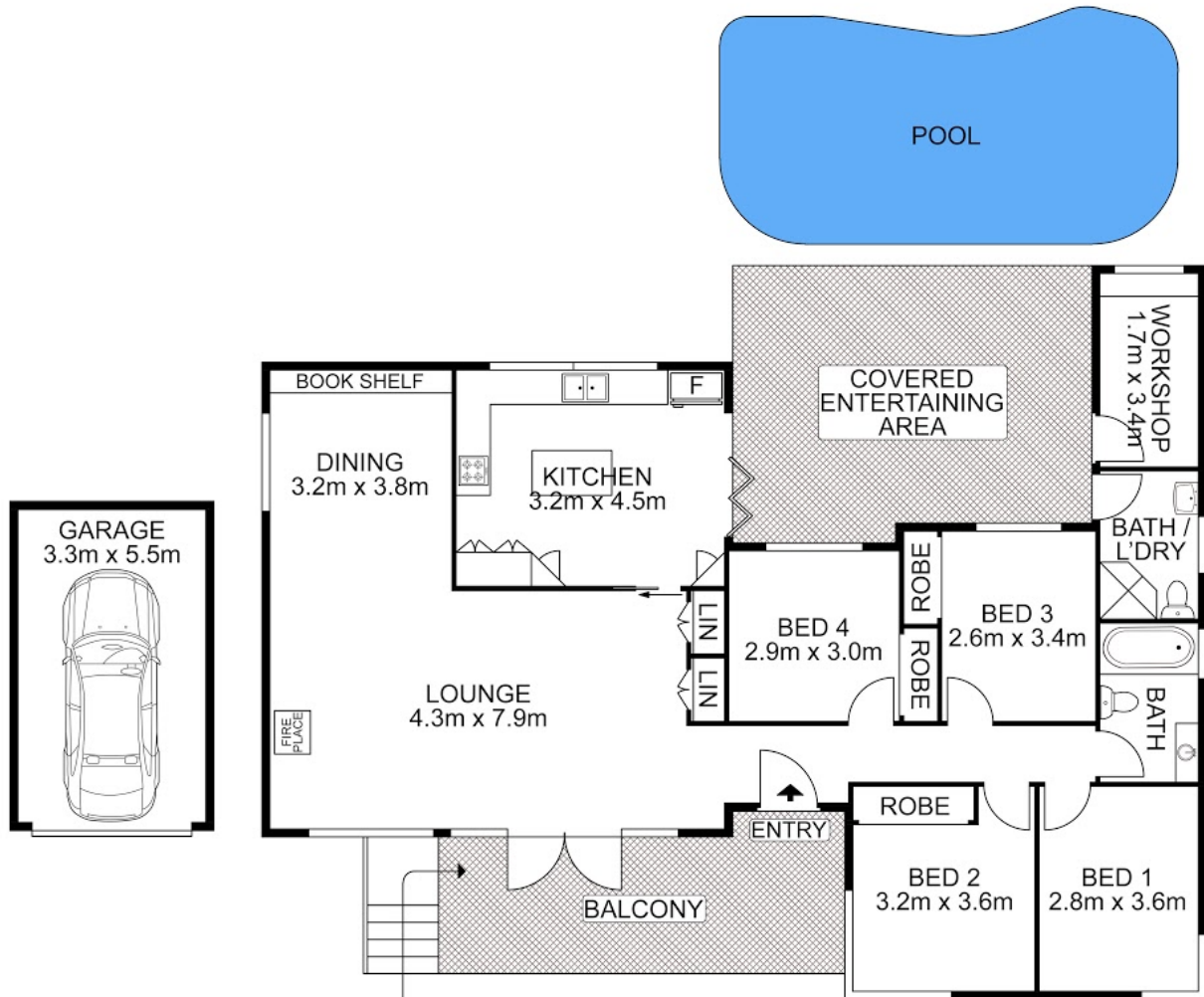
4 BED | 2 BATH | 1 CAR

PRICE:
\$842,000

OPEN FOR INSPECTION:
N/A



Huss Al Salemi
0411699419
huss@atrealty.com.au
www.agencycentral.com.au



 AGENCY

Disclaimer: Please note this floor plan is for marketing purposes and is to be used as a guide only. All dimensions are estimates only and may not be exact measurements.

6 Marlow Place, Campbelltown

Huss Al Salemi • All measurements are approximate • Drawn for marketing purposes only

0411699419

huss@atrealty.com.au

www.agencycentral.com.au

