

**SOLD**

## AN AMAZING AND AWARD-WINNING SPACIOUS & UNIQUE TRI-LEVEL TOWNHOUSE WITH AN ELEVATOR.

It is a really great opportunity to live in or invest.

It is an amazing opportunity to secure your own spacious tri-level townhouse. Located in a unique waterfront complex. There are only 6 units in the complex at the prime location of Runaway Bay. This tri-level townhouse comes with an elevator that offers 3 bedrooms plus a study.

At the push of a button, an elevator will take you from the ground floor to the third floor. A home elevator adds an element of ultimate convenience to an already fascinating living space.

This is the perfect setting for this sophisticated, timeless residence. Overlooking a beautiful mini-park and Broadwater, the peace and privacy are unique.

### Property features:

#### Ground floor

- Double lock up garage
- Study room or an office room or kids' room.
- Laundry room.

#### Second floor

- Open plan living modern kitchen with granite stone benchtops
- Separated dining area.
- Large living area with balcony overlooking a beautiful mini-park and Broadwater.

#### Third floor

- 3 spacious bedrooms, 2 bathrooms, big private master bedroom ensuite with spa bath, separated shower and walk-in wardrobe, balcony with a great view overlooking mini-park and Broadwater.
- 2 other double bedrooms with built-in robes.

**3 BED | 2 BATH | 2 CAR**

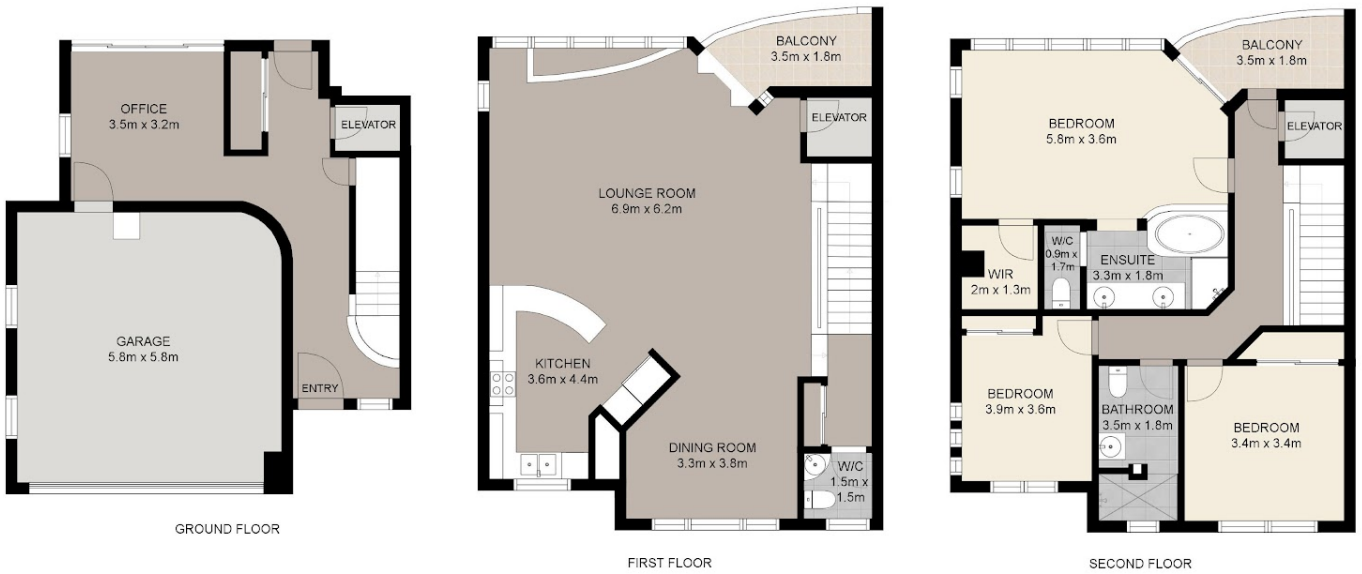
**PRICE:**  
\$1,175,000

**OPEN FOR INSPECTION:**  
N/A



**Arshareeya Wajadee**  
**0452295995**  
awaja@atrealty.com.au  
[www.atrealty.com.au](http://www.atrealty.com.au)

Arshareeya Wajadee 0452 295 995



Whilst every attempt has been made to ensure the accuracy of the floor plan contained here, measurements of doors, windows, rooms and any other items are approximate and no responsibility is taken for error, omission or mis-statement. This plan is for illustrative purposes only and should only be used as such by any prospective purchaser. The services systems and appliances shown have not been tested and no guarantee as to their operability or efficiency can be given.  
Created by GoldCoast Photography (c) 2021. www.goldcoast.photography 0402 042 799.

**GOLD**COAST  
PHOTOGRAPHY

Disclaimer: Please note this floor plan is for marketing purposes and is to be used as a guide only. All dimensions are estimates only and may not be exact measurements.