



SOLD

PRIVATE PARKLAND SETTING

Set in 6.5 acres of parkland, this architect-designed home has been oriented to maximise the light. It offers a large family plenty of north-facing living space.

The home boasts two lounges, one formal with an open fireplace and a second lounge that is ideal for large gatherings.

The main bedroom has a spacious walk-through wardrobe that connects to a large ensuite.

And if you are thinking of working from home, then you're in luck as the main bedroom has its own office/study right next door.

The remaining four bedrooms, all with built-ins, are located in the west wing, giving guests or family privacy. This wing also features a bathroom and rumpus room.

The home is surrounded by a bullnose veranda that allows you to enjoy this magnificent setting all year, protected from the elements.

This rare find is literally minutes away from Milton Village and the Ulladulla township, and some of the best beaches on the South Coast.

All viewings are by appointment only - SOLD by Micky Scott atrealty

5 BED | 2 BATH | 2 CAR

PRICE:
\$1,700,000

OPEN FOR INSPECTION:
N/A



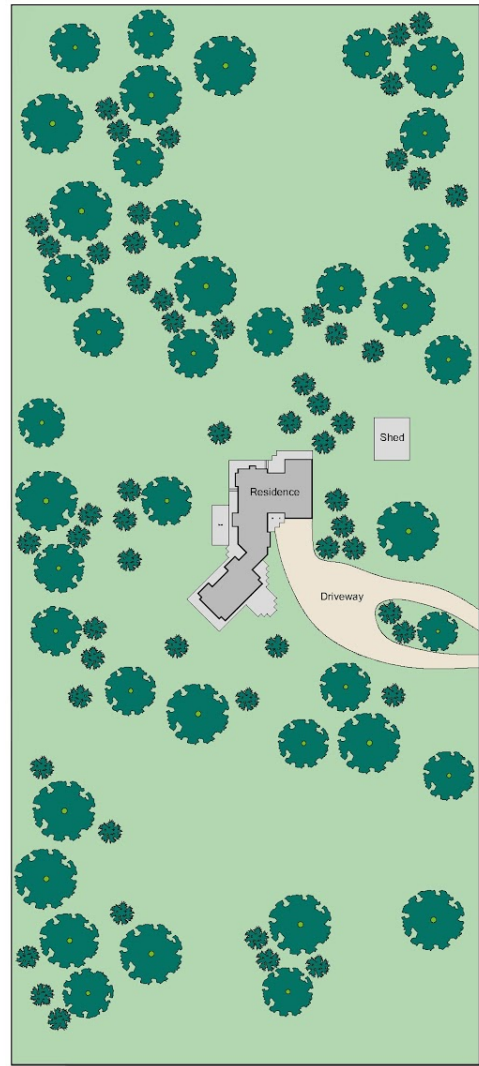
Micky Scott
0418622822
micky.scott@atrealty.com.au
www.atrealty.com.au



272B Princes Hwy, Milton

Approximate gross interior floor area: 313 m²

All measurements and dimensions are approximate and are for illustrative purposes only, no warranty is given to its accuracy. Interested parties are advised to rely on their own enquiries.



Disclaimer: Please note this floor plan is for marketing purposes and is to be used as a guide only. All dimensions are estimates only and may not be exact measurements.