



SOLD

GREAT INVESTMENT IN THE HEART OF REDCLIFFE

What a great investment opportunity in this well-presented apartment in the CBD of Redcliffe with sensational returns that will greatly impress all buyers. So, if you want to add a sound inclusion to your portfolio or maybe this can be your first investment property it is a must for viewing.

With only a 2-to-3-minute walk to the Redcliffe waterfront and with amenities such as the new refurbished The Komo to open, quality restaurants, bars, cafes all close by, wow what a location. On top of this the Redcliffe shopping centre, hospital, public transport, and all other amenities close by, what a location.

I have mentioned how great of an apartment this is for any prudent investor out there, but this quality 2-bedroom apartment would be a special place to make it your home to live in. Currently in the holiday letting pool this apartment in this sensational real estate market has confirmed advanced bookings so what a great return you would be getting on investment from day 1.

Features include.

- . Quality kitchen
- . 2 Quality sized bedrooms with built-ins
- . 2 bathroom's 1 being an ensuite.
- . Open plan living that flows out onto the balcony
- . Communal pool
- . Secure car parking
- . Balcony

To sum up this amazing apartment in an amazing location whether you want to go for a swim, go kayaking, just a walk along the beach. go for a bike ride or maybe just visit one of the great restaurants everything is basically all at your doorstep. Having said all the above now is the time to give Errol a call or come visit one of our open home inspections.

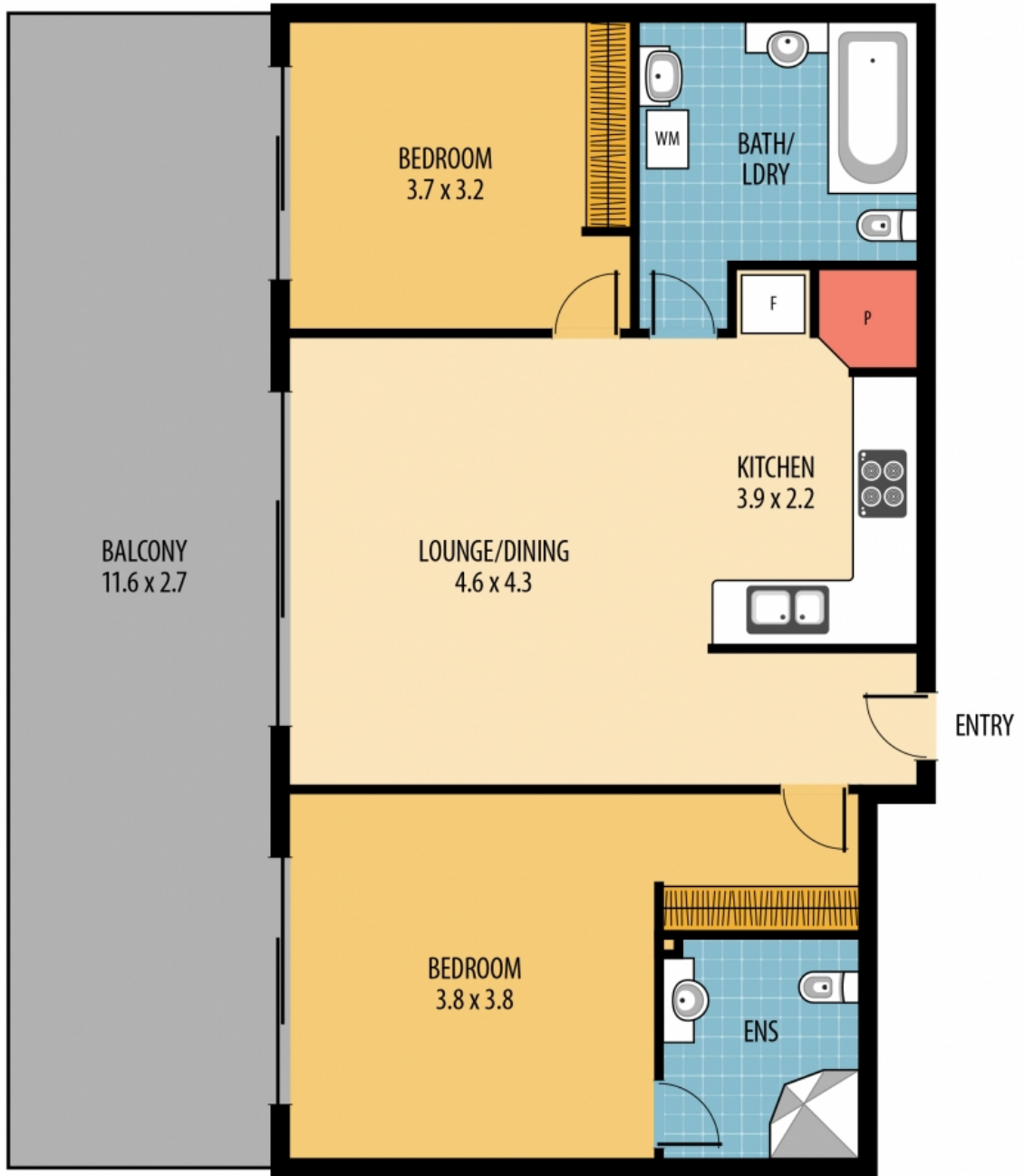
2 BED | 2 BATH | 1 CAR

PRICE:
\$360,000

OPEN FOR INSPECTION:
N/A



Errol Reibelt
0415812557
errol.reibelt@atrealty.com.au
www.atrealty.com.au



Total area: 109m² (approx.)
 Internal area: 76m² (approx.)
 Outdoor area: 33m² (approx.)



Disclaimer: Please note this floor plan is for marketing purposes and is to be used as a guide only. All dimensions are estimates only and may not be exact measurements.

17/17 MARKET/REBELT

DISCLAIMER: ALL DIMENSIONS ARE AN APPROXIMATION ONLY AND NO GUARANTEE IS GIVEN WITH RESPECT TO ACCURACY.

Errol Reibelt
 0415812557
 errol.reibelt@atrealty.com.au
www.atrealty.com.au

