

62 KOALA PLACE, CAPALABA, QLD, 4157



SOLD

SOLD! MASSIVE HOME WITH RESERVE AT REAR!

SOLD!

Ladies and gentlemen, we are excited to present to you a truly fantastic lifestyle opportunity!

Situated on 700m² in a quiet cul-de-sac is this large, impressive and beautifully presented home.

The home is located in Capalaba's prestigious, elevated and highly sought-after "Koala Park Estate".

It also backs onto a tranquil, never-to-be built-out bushland reserve for complete peace and privacy.

The sprawling residence measures 370m² under-roof and includes all the features of modern living:

- * 5 huge bedrooms - 4 up, 1 down
- * All 5 bedrooms are "king-sized"
- * Main w. ensuite, spa & walk-in
- * 3 full bathrooms - 1 down, 2 up
- * 4 separate living & meals zones
- * Large & well-appointed kitchen
- * Fully ducted air-con throughout
- * 9-foot ceiling d-stairs for space
- * Wet bar with a 2nd dishwasher
- * High quality stair-lift available
- * Large outdoor entertainment
- * Big in-ground swimming pool
- * A fully fitted winter pool cover
- * Backyard, garden shed, fenced
- * Beautifully presented gardens
- * Access to the bushland at rear

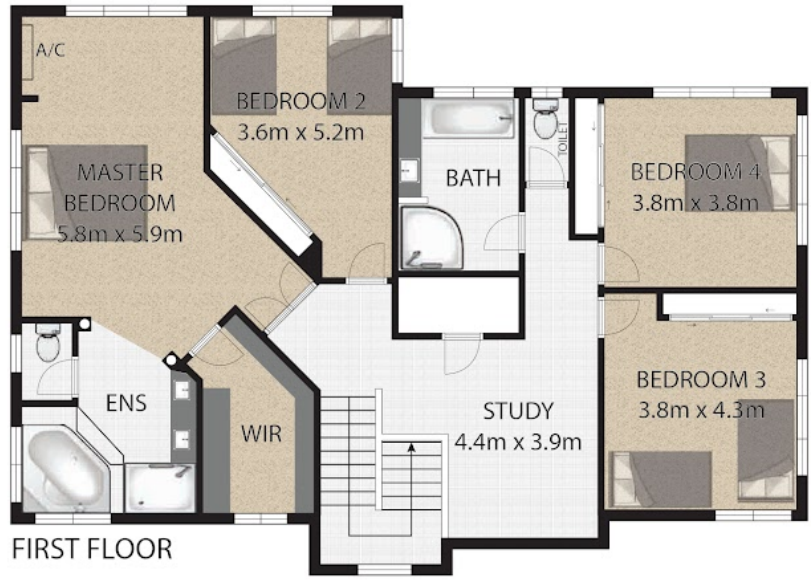
5 BED | 3 BATH | 2 CAR

PRICE:
\$931,200

OPEN FOR INSPECTION:
N/A



Ben Tafolo
0419260719
tafola@atrealty.com.au
tafalorealty.com.au



Disclaimer: Please note this floor plan is for marketing purposes and is to be used as a guide only. All dimensions are estimates only and may not be exact measurements.

62 Koala Place, Capalaba 4157
TOTAL APPROX. FLOOR AREA 347 SQ.M

Ben Tafolo
0419260719

tafolo@atrealty.com.au
tafolorealty.com.au