



**SOLD**

**GREAT LOCATION AND FANTASTIC NEW PRICE - RHSZ**

Buy now and invest in the future. Situated on a large block, this beautifully presented home could tick all the boxes. It is safe and secure for youngsters with ample room for pets. The hobbyist is sure to love the large powered workshop and the abundance of storage area that adjoins. Freshly modernized and painted inside and outside, there is an abundance of quality throughout. It is well located in Rossmoyne High School Zone. Among the many features, there are two separate living areas. The main living room is all aglow with natural sunlight. A clever floor plan utilizes every square inch for family pleasure. The timeless gem expresses a warm aura and boasts high ceilings. You are sure to be impressed once inside as there is nothing for you to do but move in and enjoy. This is truly a home which must be viewed to appreciate. Be Quick view before it is too late.

**EXTRA FEATURES**

- Four generous sized bedrooms all with built in robes and wall to wall carpet
- Main bedroom has ensuite with shower, vanity, separate WC
- Modern central kitchen with quality appliances, including dishwasher and new gas cooktop, stone benchtops, ample cupboard storage plus walk-in pantry
- Modern LED lighting, two split system air conditioners plus two gas bayonets
- Undercover outdoor entertainment area with sliding doors from all family areas
- Ample laundry storage – stone benchtop plus handy indoor clothesline
- Fully reticulated, easy care gardens
- Remote control garage plus secure lock up parking for multiple vehicles
- Large powered work shed – perfect for the handyman
- Home constructed from brick and tile 1973 – fabulous era for quality
- Large Family size block: 769m2 - Located in the Melville Shire
- Shire rates: \$1546.18 Water rates: \$1318.89
- Year of construction: 1973

Close to Top Rated Schools such as

- Rossmoyne Senior High School 4.5 Km 7 minutes
- Corpus Christi College 1.3 km 4 minutes
- Yiddara Primary 1,3 km 4 minutes
- Bateman Primary School 400 meter 1 minute

It is a close proximity to Shops, Hospitals, University, and other Services

**4 BED | 2 BATH | 4 CAR**

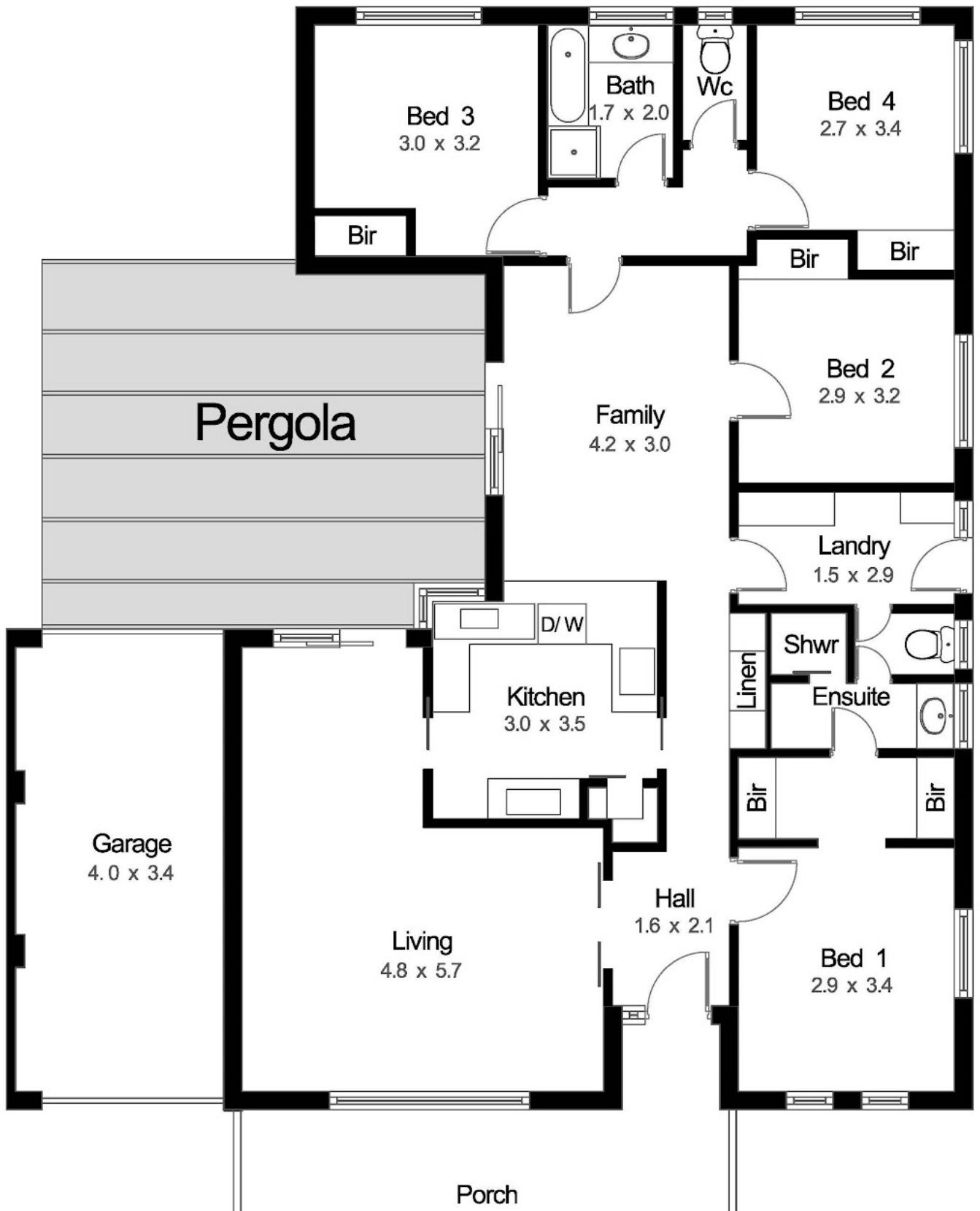
**PRICE:**  
\$985,000

**OPEN FOR INSPECTION:**  
N/A



**Helen Richardson**  
0417262788  
helen@atrealty.com.au  
[www.atrealty.com.au](http://www.atrealty.com.au)

Covered Workshop with a lockup shed: 8m X 5m



Disclaimer: Please note this floor plan is for marketing purposes and is to be used as a guide only. All dimensions are estimates only and may not be exact measurements.

23 STODDART WAY BATEMAN WA 6150

Measurements are approximate, and no warranty is given to the accuracy thereof. Drawn for illustration purposes only.

**Helen Richardson**  
0417262788  
helen@atrealty.com.au  
[www.atrealty.com.au](http://www.atrealty.com.au)

@realty