



# FOR SALE

## EXECUTIVE MAIN RIVER SUNSET PARADISE ROOFTOP TERRACE PENTHOUSE

**POSITION! POSITION! POSITION!** Call us for a private viewing! This premium, waterfront apartment is one of a kind. It is perfectly situated on the widest stretch of the Nerang River in the boutique 4 story "Sentosa Waters" complex on Paradise Island. This executive 1 Bedroom plus study/bedroom apartment provides a sanctuary with ever changing views of the water. This stylish apartment is filled with light and spoils one with amazing river and hinterland views. The oversized rooftop terrace, is ideal for entertaining and a BBQ, while soaking in breathtaking sunsets, offering unparalleled panoramic views of Surfers Paradise skyline and the Nerang river.

### APARTMENT FEATURES:

- + Top floor with west facing, covered balcony
- + Oversized rooftop terrace with shade sail
- + Modern open plan design
- + Contemporary kitchen with stainless steel appliances, integrated dishwasher, and stone bench tops
- + Perfect indoor/ outdoor living with floor to ceiling tinted stacker sliding doors
- + High ceilings with water reflecting mirrors
- + 2 bedrooms or 1 bed + study
- + 2 - way bathroom
- + Master bedroom with built in robes
- + European internal laundry with dryer
- + Reverse cycle air-conditioning system

### BUILDING FEATURES:

- + Security intercom system + secure building access
- + Secure residents only complex
- + Riverfront resort style pool
- + Heated spa
- + Covered poolside BBQ area

**2 BED | 1 BATH | 2 CAR**

### PRICE:

Offers over \$625,000

### OPEN FOR INSPECTION:

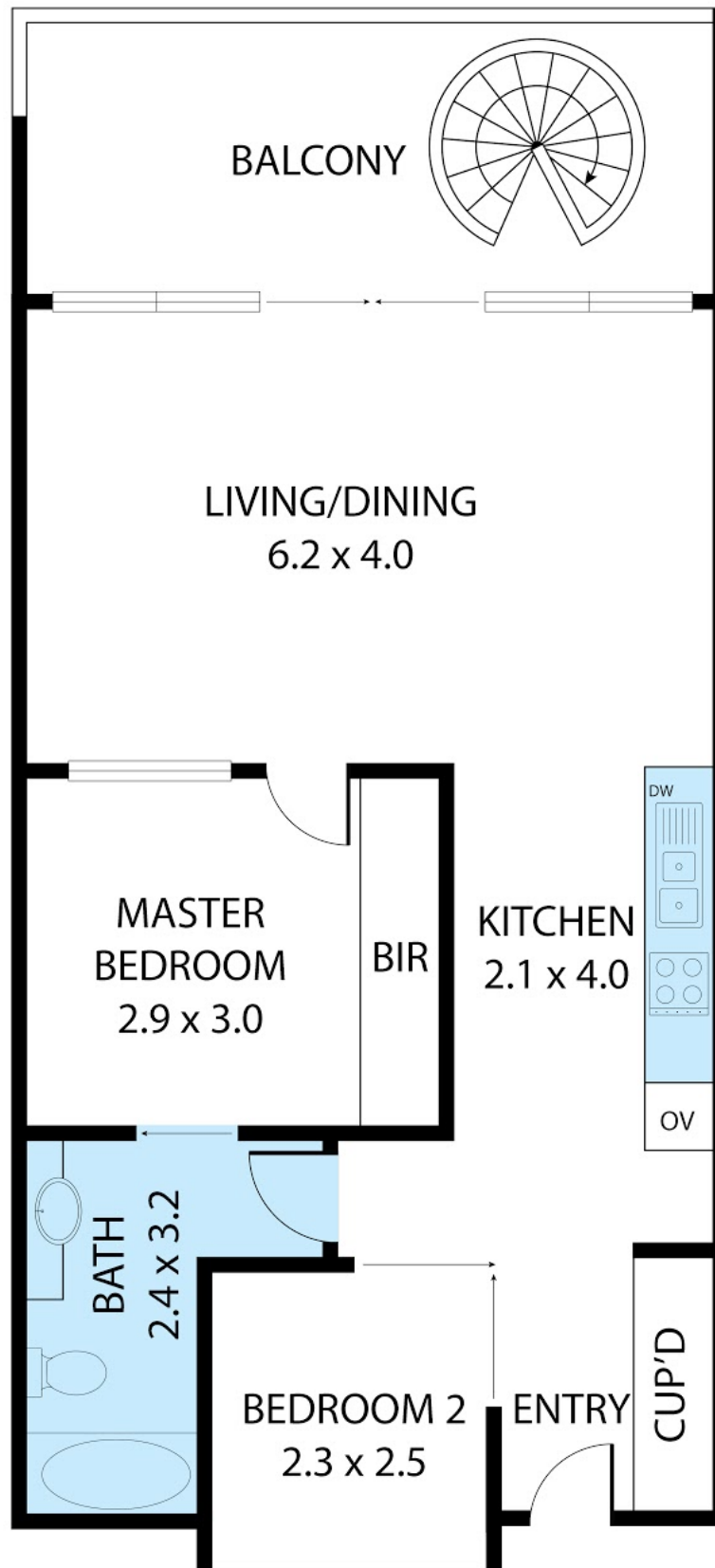
N/A



**Ingrid Taylor**

**0406994911**

ingrid@mandate2.com.au



Disclaimer: Please note this floor plan is for marketing purposes and is to be used as a guide only. All dimensions are estimates only and may not be exact measurements.

404/30-32 Paradise Island, Surfers Paradise 4217

TOTAL APPROX. FLOOR AREA 64 SQ.M

Ingrid Taylor  
0406994911

ingrid@mandate2.com.au

