



# FOR SALE

## SEMI RURAL LIVING ON A HUGE 996SQM BLOCK

This home's superb setting is impressive to say the least. The location is enviable with it's semi rural lifestyle that is accompanied with a growth plan that will excite any astute buyer looking to settle down & raise a family. The home's expansive floor plan has been designed with comfort & practicality in mind with its use of space being cleverly maximised to ensure a high standard of quality living is achieved. If you love to entertain or spend quality time outdoors, the alfresco overlooking the backyard is a delight.

### Features Include:

- Front veranda overlooking the manicured gardens
- Spacious foyer
- Boasting four generously proportioned bedrooms with built in robes & ceiling fans to two
- The master suite includes an ensuite with a corner bathtub, a walk in robe & built in robe
- Fourth bedroom could also be perfect for a study or home office
- Formal living room with double doors opening to the front veranda
- Family room includes a cleverly tucked away reading nook
- Rumpus room with backyard access
- Separate dining room
- Well appointed kitchen with ample cupboard & bench space
- Walk in pantry
- Dishwasher
- Built in wine rack
- Breakfast bar overlooking the family room
- Bright & airy main bathroom with bathtub
- Separate toilet
- Internal laundry with built in linen & backyard access
- Authentic Spotted Gum floorboards
- Ducted air conditioning throughout
- Plenty of internal storage throughout
- Expansive undercover alfresco perfect for entertaining
- Fantastic sized backyard with ample room for the kids to play
- Garden shed
- Double garage with remote & internal access
- Side access to backyard
- 996sqm block

4 BED | 2 BATH | 2 CAR

### PRICE:

\$960,000 - \$990,000

### OPEN FOR INSPECTION:

N/A

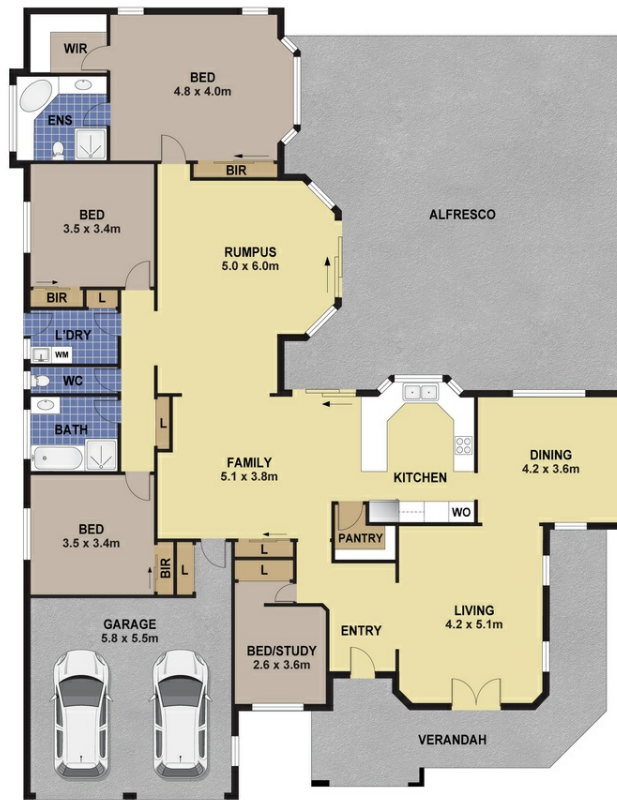


**Bobby Reynolds**

**0432173566**

bobby.reynolds@atrealty.com.au

[agencycentralwilton.com.au](http://agencycentralwilton.com.au)



## 27 TYSON ROAD WILTON

### DISCLAIMER

PLANS SHOWN ARE FOR MARKETING PURPOSES ONLY. ALL DIMENSIONS ARE APPROXIMATE AND NOT TO SCALE. THEY ARE SUBJECT TO ERRORS AND INACCURACIES AND NO LIABILITY WILL BE ACCEPTED. INTERESTED PARTIES SHOULD MAKE THEIR OWN ENQUIRIES.  
PRODUCED BY OPEN2VIEW 0467 999920.

Disclaimer: Please note this floor plan is for marketing purposes and is to be used as a guide only. All dimensions are estimates only and may not be exact measurements.