



# SOLD

## ENCHANTING DOUBLE VIEWS - BEACHFRONT AND RIVER VIEWS

You will be enchanted with the views from Sunrise to Sunset. The morning sun glistering over the waves of Coolangatta / Greenmount Beach and the Tweed River, to the perfect Sunsets over the ocean.

Positioned on the 6th floor of Kooringal Court Apartments, this property enjoys uninterrupted beachfront views, towards Currumbin, Burleigh to Surfers Paradise and from the rear of the apartment beautiful views over Jack Evans Harbour and the Tweed River.

As you enter the property, you are invited down the hall by the promise of sparkling ocean views and an abundance of natural light. The living and dining areas offer spectacular vistas framed by floor-to-ceiling windows, flowing seamlessly to the ocean-facing balcony. Follow the ocean around to the kitchen, and views over Tweed River.

Enjoy the sunrise from bed as the views continue in the master bedroom. The master is well proportioned with ensuite bathroom, built-in robes and access to the covered balcony. The second bedroom is bathed in natural light, also with built-in robes and situated across from the main bathroom and generous laundry. Finally, the property is complete with an oversize 3.4m x 8m car space located in the secure car park.

Whether you are looking for an investment or want to own a piece of Coolangatta paradise for yourself, this opportunity is too good to miss!

Property features:

- 270 degree ocean and river views
- Open plan living and dining
- Covered ocean-facing balcony
- Kitchen with stainless steel appliances, plenty of storage, and views over Tweed River
- Master bedroom with ensuite, built-in robes and access to balcony
- Second bedroom with built-in robes
- Main bathroom with bath, shower and separate W/C
- Generous laundry
- Generous size car space 3.4m x 8m car space
- Position on the 6th floor in a building of just 23 units within Kooringal Court Apartments
- Secure intercom system and entry from Marine Parade and Boundary Street, Coolangatta

2 BED | 2 BATH | 1 CAR

PRICE:  
\$1,030,000

OPEN FOR INSPECTION:  
N/A



**Michelle Topper**  
**0400362639**

michelle.topper@atrealty.com.au

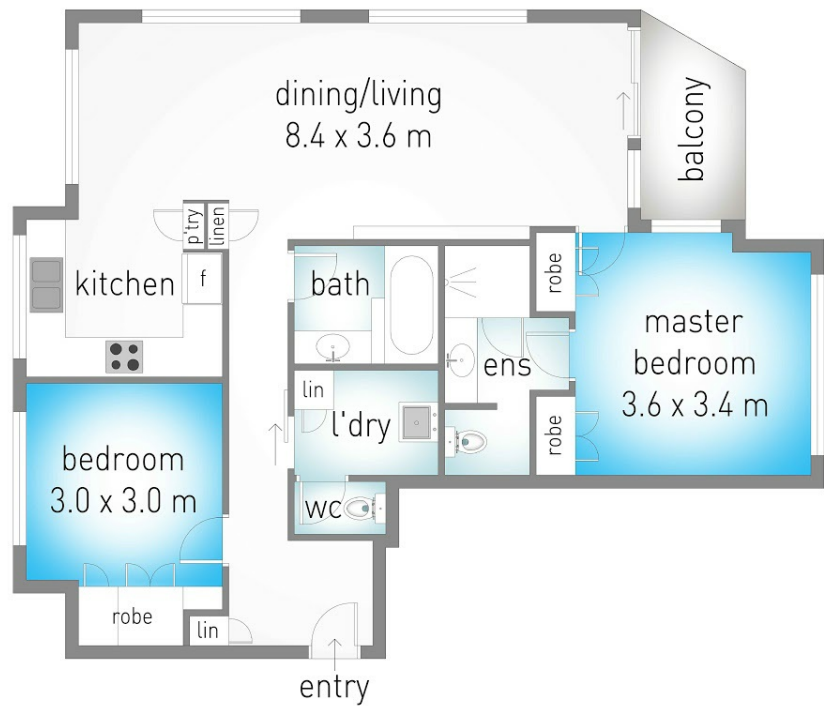
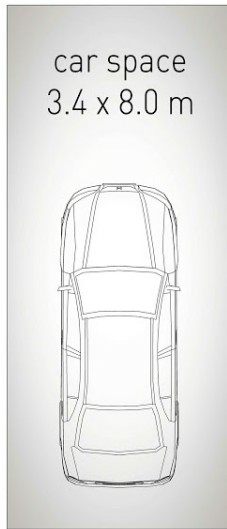
[www.atrealty.com.au](http://www.atrealty.com.au)

# 18/130 Marine Parade, Coolangatta

MICHELLE TOPPER  
REAL ESTATE  
0400 362 639



internal: 94 m<sup>2</sup> | external: 4 m<sup>2</sup> | total: 98 m<sup>2</sup>  
car space: 27 m<sup>2</sup>



Dimensions are approximate. All information contained herein is gathered from sources we believe to be reliable. However we cannot guarantee its accuracy and interested persons should rely on their own enquiries.

Disclaimer: Please note this floor plan is for marketing purposes and is to be used as a guide only. All dimensions are estimates only and may not be exact measurements.

Michelle Topper  
0400362639  
michelle.topper@atrealty.com.au  
[www.atrealty.com.au](http://www.atrealty.com.au)

