



SOLD

IMMACULATE TOWNHOUSE IN POPULAR EMERALD LAKES

Located in the highly sought-after Emerald Lakes precinct, this 3 storey townhouse offers a luxury lifestyle living at an affordable price. Practical and spaciouly designed, this property offers a stunning open plan kitchen and living which flows to your own large, private balcony perfect for entertaining or relaxing and enjoying the hinterland views.

Features:

- Level 1
- Double lock up garage
- Laundry
- Level 2
- Air conditioned, open plan lounge and dining areas opening to the balcony
- Kitchen with stone benchtops and quality appliances
- Study Nook
- Powder room
- Level 3
- Master suite with WIR and ensuite
- Second bedroom with WIR
- Both bedrooms are air conditioned and with ceiling fans.
- 2 Bedrooms (both with WIR).
- 2 Bathrooms (double vanity ensuited master).

Location:

Centrally located within this quiet complex of Emerald Lakes and is only 4 minutes to the Nerang train station and the M1, 10 minutes from Robina Town Centre, Pacific Fair and the beaches of Broadbeach.

Motivated owners, Inspect today!

Incoming:

Fantastic tenant in place:
Currently leased 08/08/2022 for \$480.00pw

2 BED | 2 BATH | 2 CAR

PRICE:
\$492,500

OPEN FOR INSPECTION:
N/A

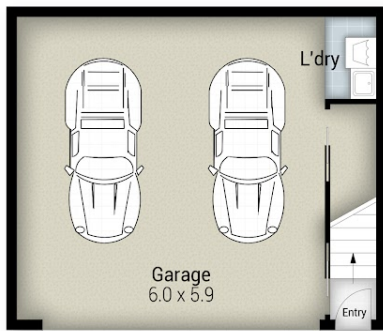


Michelle Topper
0400362639
michelle.topper@atrealty.com.au
www.atrealty.com.au

43/3031 The Boulevard, Carrara

2 Bed | 2 Bath | 2 Car

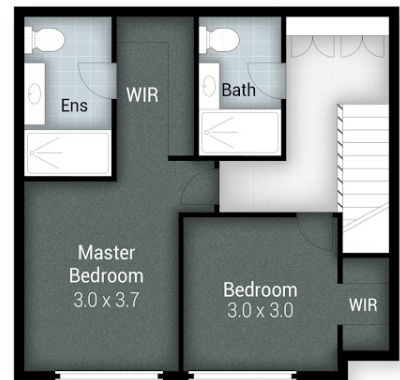
Internal: 136m² | External: 9m² | Total: 145m²



Ground



Level 1



Level 2

Michelle Topper 0400 362 639
michelletopper@atrealty.com.au
www.atrealty.com.au

Disclaimer: Whilst every effort has been made to ensure the accuracy of these particulars, no warranty is given by the vendor or the agent as to their accuracy. Interested parties should not rely on these particulars as representations of fact but must instead satisfy themselves by inspection or otherwise.

Disclaimer: Please note this floor plan is for marketing purposes and is to be used as a guide only. All dimensions are estimates only and may not be exact measurements.