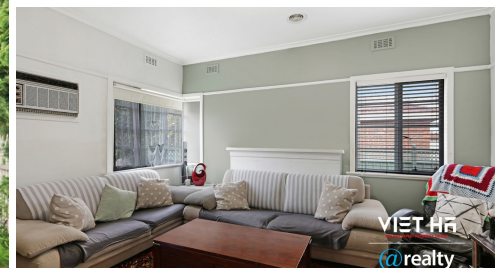


1/30 LEWIS STREET, SPRINGVALE, VIC, 3171



SOLD

FIXED DATE SALE CLOSING MONDAY 26TH OF JUNE (UNLESS SOLD PRIOR)

265 sqm (Approx.) of prime land

Live or Invest in A Sought - Premier Location

@@@ Two on the block - No active Body Corporate Fees @@@

This is a great home that offers a huge amount of potential in a fast-growing suburb, attention first home buyers, down-sizers and investors, there is simply no other place more convenient, central, edgy and luxury Unit.

You will find all two generously sized bedrooms, which feature built, large living room, sizeable kitchen and meals area, central & well-maintained bathroom, tiled throughout, lovely paved outdoor space, this spacious homely unit provides desirable low-maintenance living in a prime location, convenient and boasting an expansive 265 sqm block on a quiet side street, this solid brick home enjoys a large front yard, long driveway this is an outstanding opportunity that's simply too good to miss.

Set at the rear of a well-maintained complex presents this modern unit positioned right in the heart of Springvale and is within walking distance to Springvale main street, public transport, local parks and schools, and its vibrant amenities, occupied for three years by stable long-term tenants.

Premier location and is within minutes from Springvale Shopping Centre, the Princes Highway, the Eastlink, Homemaker Hubs including IKEA, Harvey Norman and Bunnings, Supermarkets, Monash University, Minaret College, St John Vianney's Primary, Westall Secondary, Wellington Secondary, Heather Hill Primary School, Silvertown Primary School, Monash Uni, Athol Primary School, Killester College, Springvale stations, Springvale Library, Noble Park Aquatic Centre, Childcare Centre and easy freeway access, parklands and bus and train services and major road arterials

Property features include:

2 BED | 1 BATH | 2 CAR

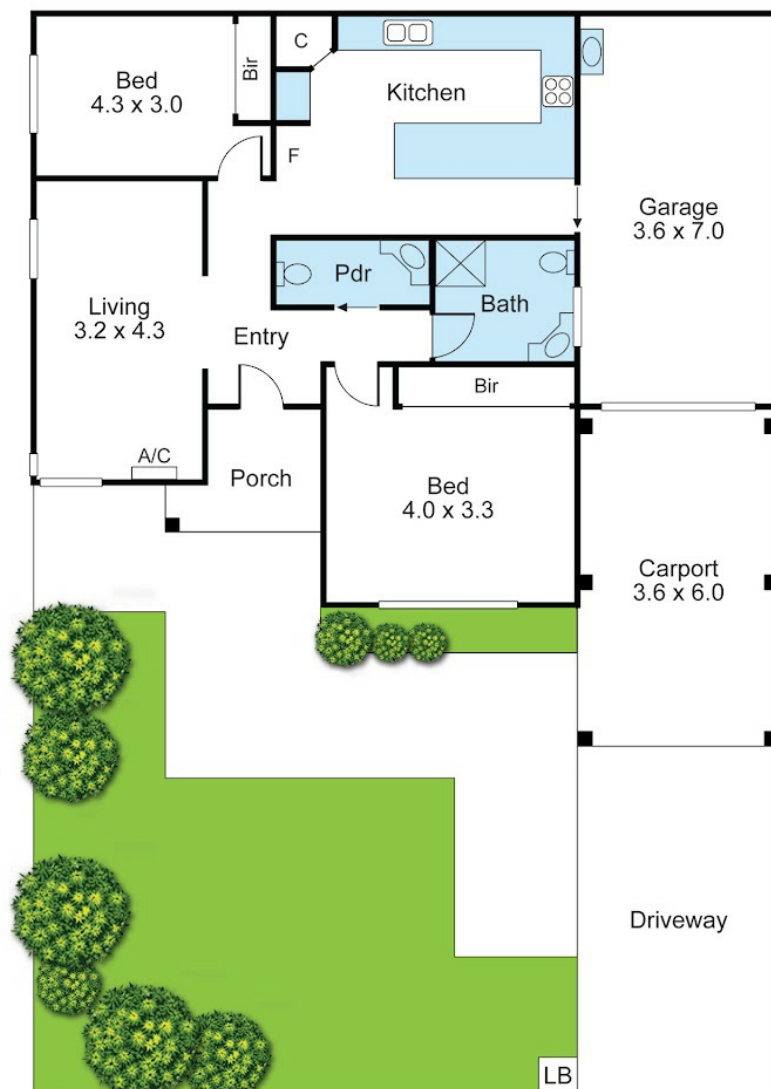
PRICE:
\$620,000

OPEN FOR INSPECTION:
N/A



Viet Ha
0406246384
viet@vietha.com.au
vietha.com.au

1/30 Lewis Street, Springvale VIC 3171



Springvale

Disclaimer: This floorplan is for illustration purposes only and no warranty is given to its accuracy. Purchasers are advised to carry out their investigations.

Disclaimer: Please note this floor plan is for marketing purposes and is to be used as a guide only. All dimensions are estimates only and may not be exact measurements.