



SOLD

RENOVATED TO PERFECTION

This stylish home has been renovated throughout, featuring modern inclusions that can be adorned at every turn. Spread over an impressive floorplan, it's vibrant interiors will carry you effortlessly from room to room. Situated on a large 645sqm parcel of land, everything is new and ready for it's new owners to make it their own.

Features Include:

- Three well proportioned bedrooms
- Master bedroom includes a built in robe
- Expansive open plan living & dining room with feature wall
- Well proportioned renovated kitchen with ample cupboard & bench space
- Feature timber style tiled splashback
- Modern black tapware
- Brand new rangehood, cooktop & Oven
- Brand new handle less cabinets
- Granite benchtops
- Renovated bathroom with includes new bathtub, vanity, shower glass & toilet
- Internal laundry with backyard access
- Freshly painted inside & out
- New flooring
- Acrylic rendering to front of house
- Brand new downlights throughout
- New solid timber front door
- Remote control lighting to wall, hallway & under kitchen cabinets
- New door handles
- Internal storage
- Custom made garage door with remote access
- New concrete driveway
- New timber tiles fitted to front step
- Newly landscaped gardens
- Expansive backyard
- Granny flat potential (STCA)
- 645sqm block

This modern abode is conveniently located within close proximity to all of your modern comforts

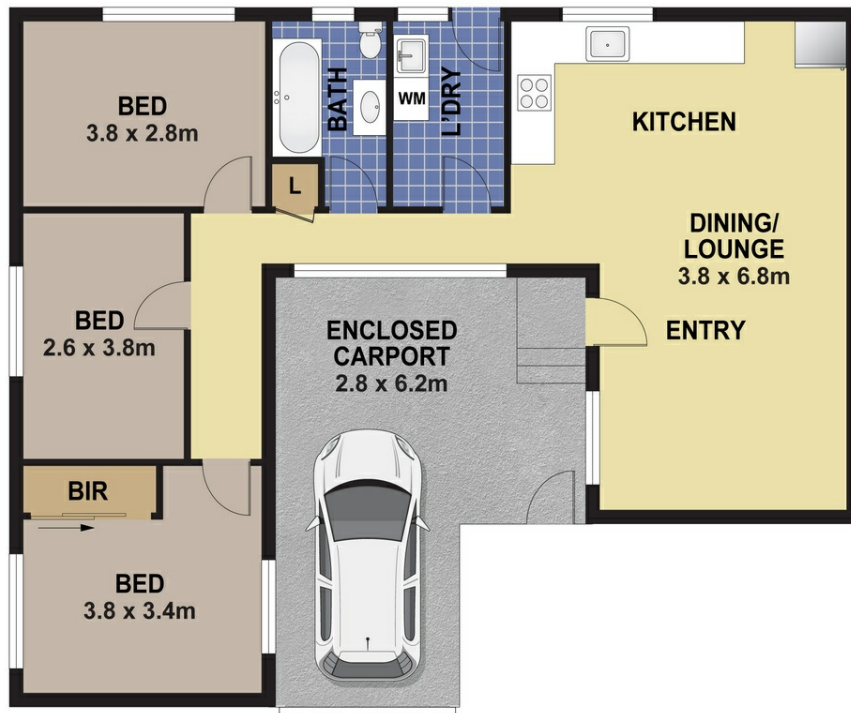
3 BED | 1 BATH | 1 CAR

PRICE:
\$650,000

OPEN FOR INSPECTION:
N/A



Bobby Reynolds
0432173566
bobby.reynolds@atrealty.com.au
agencycentralwilton.com.au



192 POPONDETTA ROAD, BLACKETT

DISCLAIMER

PLANS SHOWN ARE FOR MARKETING PURPOSES ONLY. ALL DIMENSIONS ARE APPROXIMATE AND NOT TO SCALE. THEY ARE SUBJECT TO ERRORS AND INACCURACIES AND NO LIABILITY WILL BE ACCEPTED. INTERESTED PARTIES SHOULD MAKE THEIR OWN ENQUIRIES.
PRODUCED BY OPEN2VIEW 0467 999920.

Disclaimer: Please note this floor plan is for marketing purposes and is to be used as a guide only. All dimensions are estimates only and may not be exact measurements.