

SOLD

UNDER CONTRACT - IMMACULATE 2 LEVEL VILLA - 4 BEDROOM PLUS STUDY

Enjoy elevated hilltop living on a private dress circle cul-de-sac. This elegant 4 bedroom plus study, 2 level villa presents immaculately with a spacious open floorplan, high ceilings and all the features expected of a modern 2018 built home.

Unwind to the ambience of breathtaking views and spectacular nightly sunsets over the mountains that can be enjoyed from the privacy of your own outdoor courtyard and upstairs balcony.

The entertainer's kitchen featuring stone benchtops, stainless-steel appliances and a breakfast bar overlooks the generous dining and living spaces bathed in natural light. The internal living transitions seamlessly through full-width glass doors to the large outdoor courtyard.

Upstairs, the master bedroom is complemented by a private balcony with uninterrupted views to the Gold Coast Hinterland. The master ensuite with free-standing bath, separate shower and double vanity adjoins the walk-in-robe. Three additional bedrooms all feature mirrored built-in wardrobes and access the main bathroom while a separate study offers a private home workspace.

- Modern and stylish 2-level garden villa
- 4 bedrooms plus study, 2.5 bathrooms, 2 outdoor living spaces
- Large courtyard with hinterland views
- Large master bedroom with private balcony, ensuite with bathtub, walk-in-robe
- Bedrooms with built-in mirrored wardrobes
- Separate study
- Gourmet kitchen with stainless steel appliances, abundance of storage and wide stone bench tops
- Breakfast bar
- Dining area comfortably fits 8-seater dining table
- Family sized living area
- Downstairs powder room
- Fully ducted air-conditioning, reverse cycle and zoned
- 1 garage space plus an undercover carport
- Pet friendly complex
- Very low body corp fees, onsite manager
- Lap pool with BBQ area and sun lounges plus additional BBQ with grassy area
- Minutes to M1, shops, cafes, schools & restaurants

4 BED | 3 BATH | 2 CAR

PRICE:
\$705,000

OPEN FOR INSPECTION:
N/A



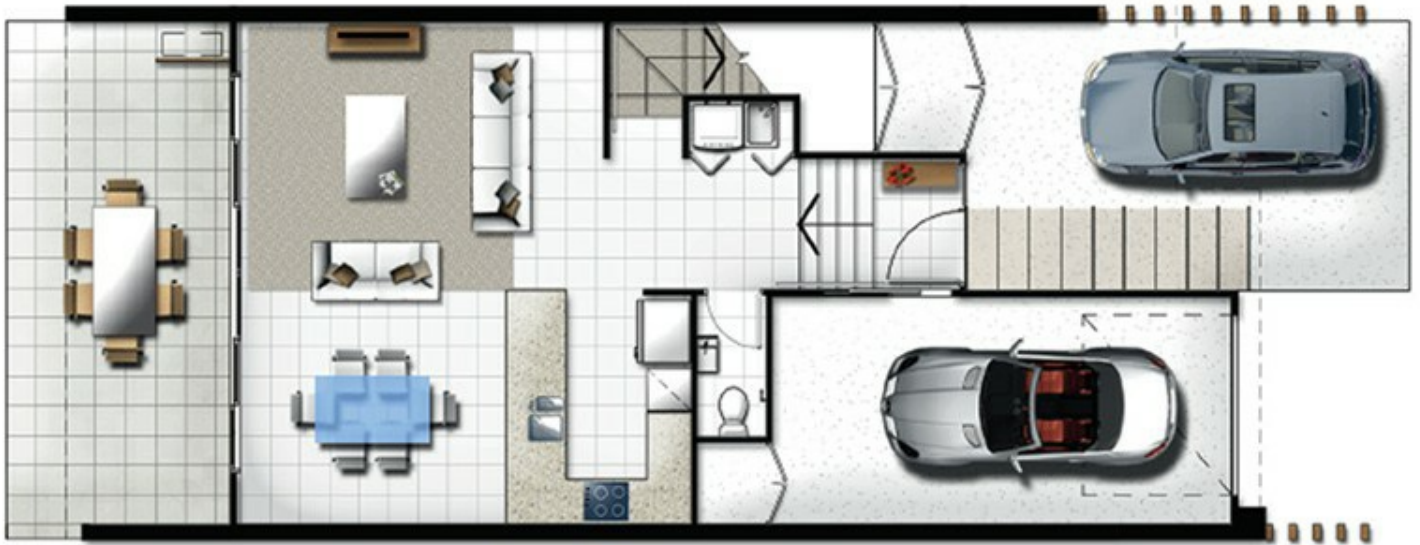
Rebecca Shipman
0411348835
rebecca@atrealty.com.au
www.atrealty.com.au

TERRACE HOME
 TYPE **T3**
 BUILDING E F G H

Carpport	22m ²
Garage	22m ² Ground
Verandah	13-15m ²
Balcony	5m ²
Internal	142-143m ²
Total	204-207m²

-  4 bedroom
-  2.5 bathroom
-  1 study
-  2 car spaces

GROUND FLOOR



UPPER FLOOR



Disclaimer: Please note this floor plan is for marketing purposes and is to be used as a guide only. All dimensions are estimates only and may not be exact measurements.