



**SOLD**

## BRAND NEW LUXURY DUPLEX!

Sensational brand new, modern, freestanding duplex for your first home, downsizer or investment. No waiting years to build just move in for winter. Coral Homes have out done themselves with this beautifully finished four bedroom, two bathroom, DLUG duplex all on one level with low maintenance grounds.

This home is called the Capri from Coral Homes and looks amazing inside and out with many up grades.

Its all been done for you to move in with some new modern furniture to match and have some fun planting and landscaping this cute property.

The living area gets loads of morning sunshine and flows out through the double sliding doors to the outside living.

It has modern neutral tiles in the living areas plus carpet in the bedrooms. The master has a WIR and ensuite. There is open plan living in the kitchen, dining and lounge room flowing out to the covered Alfresco area and backyard.

The gourmet kitchen has a walk in pantry with caesar stone island bench top and a huge six burner gas cook top and large electric oven.

With very little on the market in this price range you will have to get your skates on for this one.

Call Vaino from @realty Real Estate on 0487026765 or email to vaino@atrealty.com.au

4 bedroom master with ensuite

2 bathroom

Large gourmet kitchen with WI Pantry, stone bench tops

Open plan kitchen, dining, lounge

6 burner gas cook top

6.5kw solar electricity

Electric oven

Instant gas hot water

Air conditioning

DLUG with 2 remotes

Clothes line

Colour bond fencing

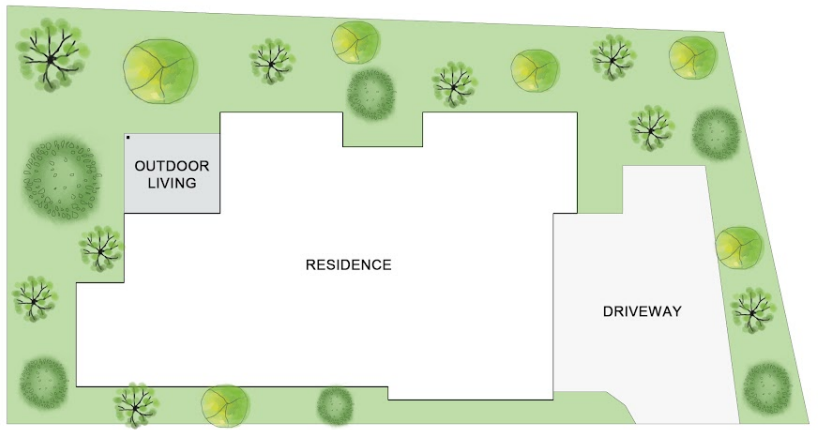
4 BED | 2 BATH | 2 CAR

PRICE:  
\$805,000

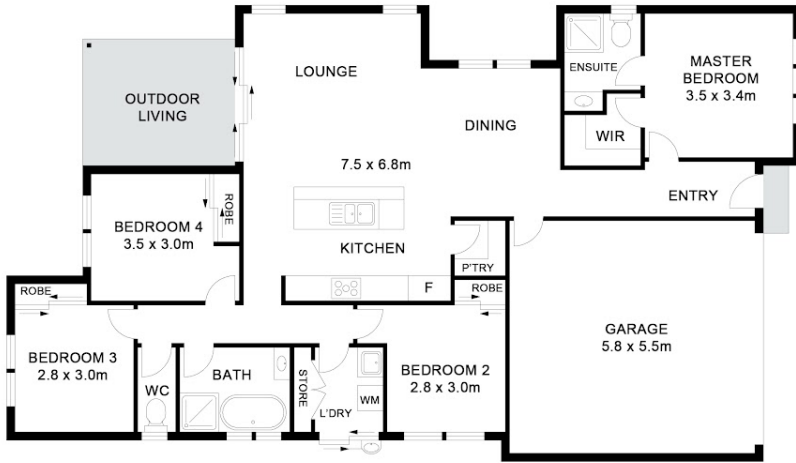
OPEN FOR INSPECTION:  
N/A



**Vaino Lillioja**  
**0487026765**  
vaino@atrealty.com.au  
Lennox Head Prestige Property



SITE PLAN  
(NOT TO SCALE)



2/11 Dent Cres Cumbalum

Floor Plan Disclaimer - Bee Hive Studios floor plans / site plans are intended as an approximate guide only. No representations or warranties of any nature are given or intended and any person using this information other than as a guide should always rely on their own enquiries. Bee Hive Studios property marketing services / Photography, Floor plans, Video, Aerial photography / <https://beehivestudios.com.au>



APPROXIMATE AREAS	
INTERNAL FLOOR SPACE	- 150m <sup>2</sup>
EXTERNAL FLOOR SPACE	- 12m <sup>2</sup>
CARPORT	- 32m <sup>2</sup>

Disclaimer: Please note this floor plan is for marketing purposes and is to be used as a guide only. All dimensions are estimates only and may not be exact measurements.