



SOLD

RARELY OFFERED - ABSOLUTE LAKEFRONT POSITION

Request an Inspection – 7 days per week

If you could imagine yourself living here, contact Gaylia Griffiths on 0419 879 037 or email GayliaGriffiths@atrealty.com.au to arrange a viewing. Due to COVID-19 we ask can you pre-register prior to attending one of our inspections. You will be required to answer a few questions and asked to adhere to social distancing.

About Noble Lakeside Park

5-star lifestyle village for over 50's with excellent facilities & amenities. Spread across 25 acres of manicured lawns & gardens that surround a stunning lake. The residence is located within the seaside town of Kingscliff, NSW. Just 15 minute drive to the Gold Coast Airport, 30 minutes to Byron Bay, 15 minutes stroll to one of Australia's award-winning beaches of Kingscliff, restaurants, cafes, specialty shops and the Kingscliff Hotel. There is Woolworths, Post Office, and the Shopping Centre all just a 10-minute walk or 5-minute drive from the property. The Kingee Bowls Club is an absolute favourite among the locals, with a modern bistro, bars, pokies, and Keno.

Key Features

- This lakefront residence enjoys one of the best positions within the park.
- The open plan living / dining area opens out to the undercover lakefront deck. Here you can relax with your morning coffee or sip a sunset cocktail and enjoy the abundance of wildlife including swans, ducks, and waterfowl.
- Two well sized bedrooms both with built-in wardrobes, ceiling fans, security screens and curtains.
- At the rear of the garage is an additional 'room with a lakefront view' ideal as a home office / sewing room / utility room.
- Separate laundry with sink, double linen cupboard, just bring your washing machine and dryer.
- Other features include reverse cycle air conditioner, security doors and fly screens, storage shed, clothesline and established gardens.
- The complex is pet friendly for a small dog or cat - subject to management approval.

Quick Info Overview

- You own the house and lease the land (weekly site fee)

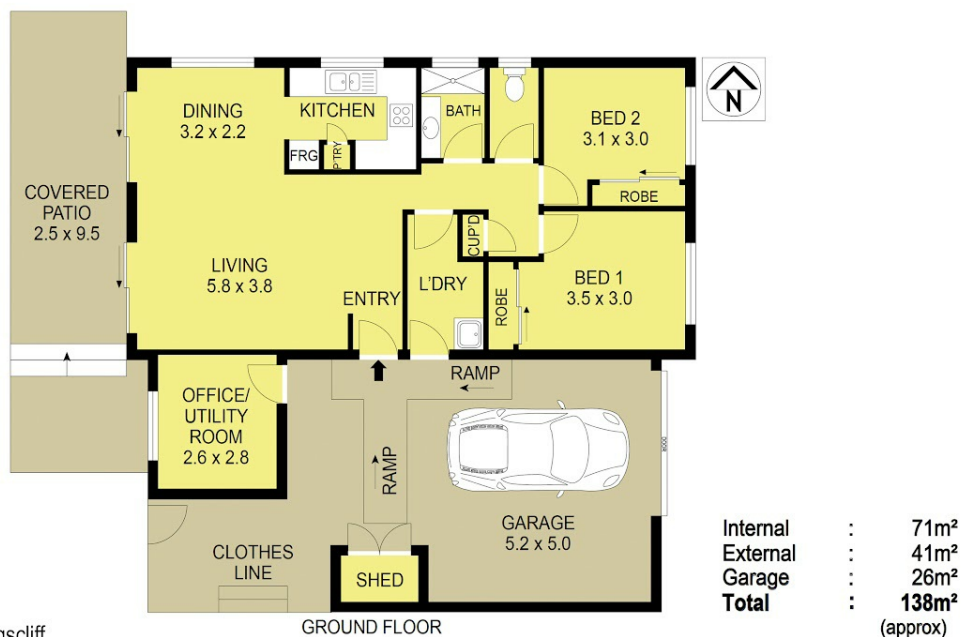
2 BED | 1 BATH | 2 CAR

PRICE:
\$425,000

OPEN FOR INSPECTION:
N/A



Gaylia Griffiths
0419879037
gayliagriffiths@atrealty.com.au
www.atrealty.com.au



14/34 Monarch Drive, Kingscliff

GROUND FLOOR

While every endeavor has been made to verify the correct detail in this brochure, neither the Agent nor Seller or Contracted Illistrator accept liability for any error or omissions. Prospective buyers should make their own enquires and form their own judgement on this property.

Disclaimer: Please note this floor plan is for marketing purposes and is to be used as a guide only. All dimensions are estimates only and may not be exact measurements.