



SOLD

PERFECT FAMILY TREE CHANGE GETAWAY

This house on 5 acres will not disappoint. It is sited and constructed to take advantage of sunrise views over Lake Samsonvale and to capture the hillside breezes, but for those cooler months the lounge has cozy wood-fired heating designed to warm the entire house.

The home spans over 2 levels with stunning 5.5m high cathedral ceilings on the entry level. It has solid hardwood polished floors and an open-plan granite benchtop kitchen that flows into separate living and dining areas. The wrap-around veranda allows for plenty of airflow and natural light inviting the outside in while capturing the views.

On the top floor, the generous master bedroom features a full ensuite, walk-in robe, and private deck. Two further bedrooms are located on the entry level, one currently being used as an office. All bedrooms have air conditioning and built-in storage.

The ground level is currently car parking come workshop, and is legal head height with a concrete slab to build under if needed. Add either more bedrooms/living space, a separate home business level, or dual living for an extended family.

Currently, the land is home to 3 sheep and fully fenced with two sliding electric gates. The house yard is pet-friendly and fully fenced with a chicken coup, raised herb gardens and fruit trees. The large dam has never run dry and has a Honda pump to water the garden if needed. Rainwater tanks with 67,500 litres of storage catchment from the house roof. There is a newly installed effective 6.3 kW solar currently running with rebates.

Features include:

- only minutes to the local State School
- 10 mins from Dayboro Township and 12 mins to Samford village
- only 45 mins to Brisbane CBD
- elevated position in a quiet cul de sac
- would make a great Air B&B for a country escape
- 6x6 fully lockable 2 car garage with cement slab
- large level pad adjoining the home perfect for stables or second dwelling

Birds are the only sound you hear, with the crisp fresh air and changing light, in space your family can enjoy and grow.

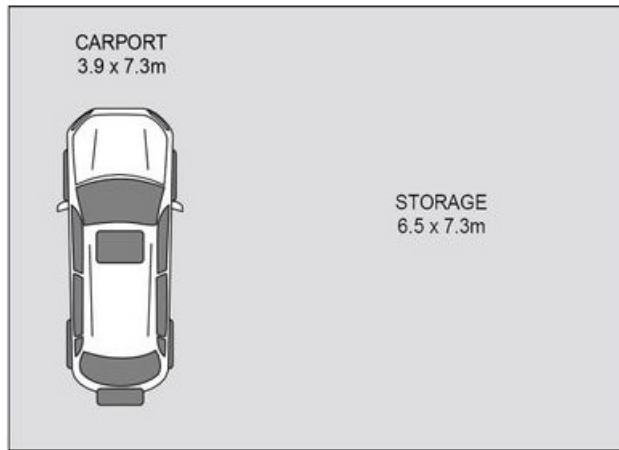
3 BED | 2 BATH | 4 CAR

PRICE:
\$945,000

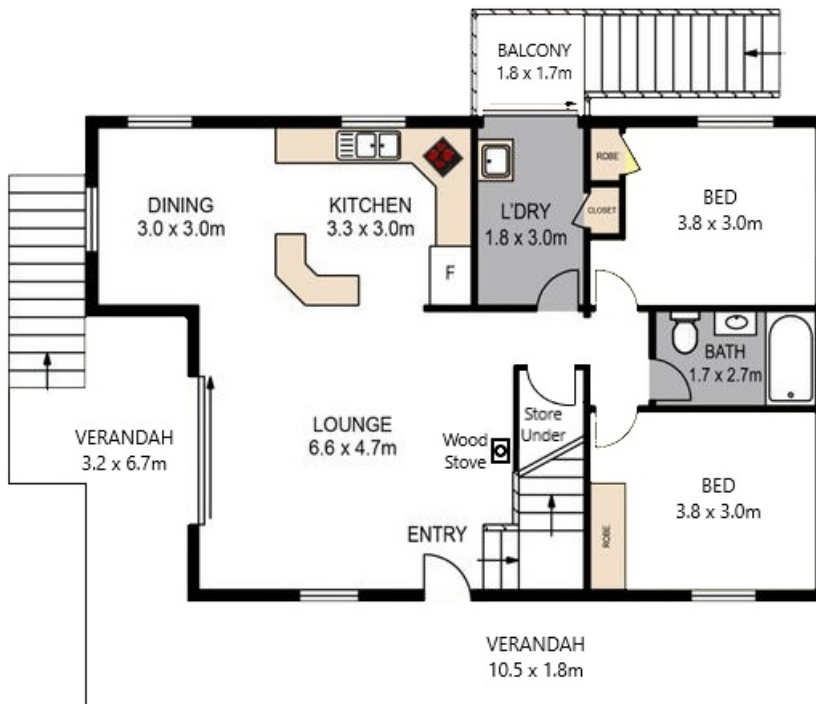
OPEN FOR INSPECTION:
N/A



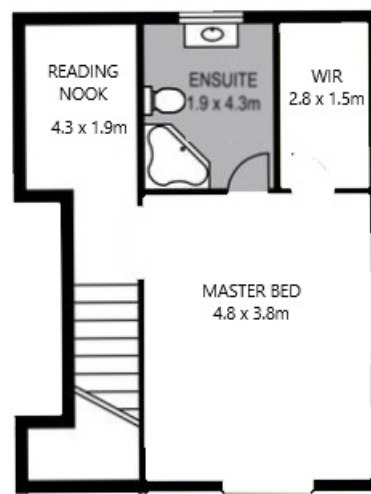
Patti Harriss
0418786696
patti@atrealty.com.au
www.atrealty.com.au



GROUND LEVEL



ENTRY LEVEL



FIRST LEVEL

Disclaimer: Please note this floor plan is for marketing purposes and is to be used as a guide only. All dimensions are estimates only and may not be exact measurements.